

Art. No. 98602/EN/04.2021

Aluminium systems

Schüco Sliding Systems ASE 67 PD

en

Operating instructions
for consumers

Contents

| | |
|-----------|--|
| 4 | 1. Notes on these instructions |
| 4 | 1.1. Use and retention of the instructions |
| 4 | 2. Safety |
| 4 | 2.1. About the safety instructions |
| 5 | 2.2. General safety instructions |
| 6 | 2.3. Safety instructions for sliding units |
| 9 | 2.4. Proper use |
| 10 | 3. Overview of types for Schüco ASE 67 PD sliding units |
| 10 | 3.1. Unit type with double track |
| 12 | 3.2. Unit type with triple track |
| 13 | 3.3. Unit type with single track - InWall |
| 14 | 3.4. Unit type with double track - InWall |
| 15 | 3.5. Unit type - freely configurable |
| 16 | 4. Operation |
| 16 | 4.1. Open sliding unit |
| 17 | 4.2. Close sliding unit |
| 18 | 5. Maintenance |
| 18 | 5.1. Cleaning and maintenance material |
| 19 | 5.1.1. General cleaning instructions |
| 20 | 5.2. Cleaning the vent and frame |
| 20 | 5.2.1. Cleaning the tracks and drainage slots |
| 20 | 5.2.2. Maintenance of gaskets |
| 21 | 5.3. Maintenance |
| 21 | 5.3.1. Maintenance contract |
| 22 | 6. Decommissioning and disposal |
| 22 | 6.1. Decommissioning |
| 22 | 6.2. Disposal |

1. Notes on these instructions

1.1. Use and retention of the instructions

Before installing and commissioning, read through this manual thoroughly and adhere to the specified sequence of the instructions. Schüco International KG shall not be liable for any damage which arises from a failure to adhere to these instructions.

These instructions are part of the product. Keep them in an accessible place so that the information is always available.

2. Safety






2.1. About the safety instructions



KEY WORD

Type / source / consequence of the danger

Pictograms and key words advise of the type of danger and the level of danger:

| | | |
|--------------------|---|---|
| DANGER |  | Imminent danger resulting in death or severe injuries. |
| WARNING |  | Potential imminent danger which may lead to death or severe injuries. |
| CAUTION |  | Potentially dangerous situation which may lead to minor injuries. |
| NOTE |  | Imminent danger of damage to property which may lead to damage to or destruction of the product or environment. |
| INFORMATION |  | Information Information, tips and advice |

2.2. General safety instructions

Follow the safety instructions in this document so as not to endanger your own life or that of others and to ensure error-free operation.

For reasons of simplicity, this manual does not contain every detail of all product types and it cannot cover every possible installation, operation or maintenance scenario.

If you have any questions, please contact your specialist fabricator or your local Schüco sales representative.



WARNING

Danger of falling

There is a risk of falling out of open units.
Do not leave open units unsupervised.



CAUTION

Risk when the vent is retracted into the outer frame

When closing, do not put hands in the striker area of the vent, as fingers could become trapped. Always operate the manually closing vent using the push bar or pull grip but outside of the locking units.

Fitness for purpose with increased weight

For vent weights above 300 kg, there may be significantly larger operating forces. Classification of the operating forces in accordance with class 1 of EN 13115 is not likely to be achieved.

Weight and security

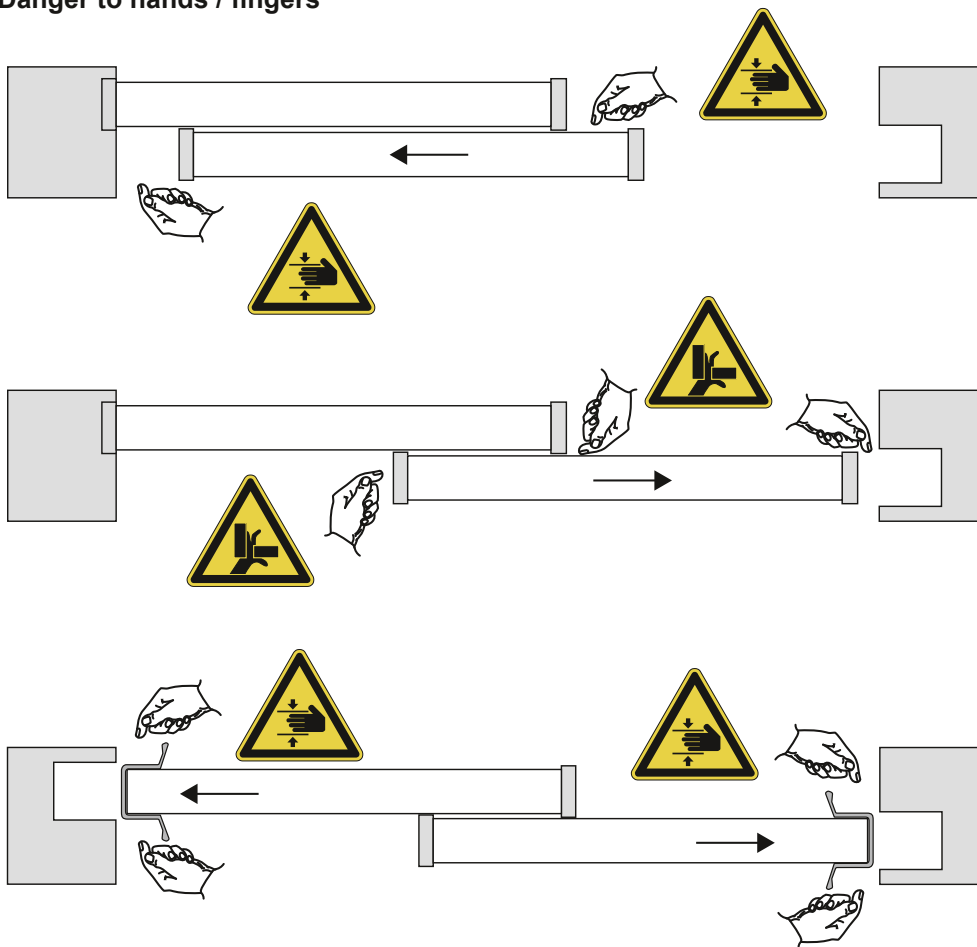
During closing, the moving vent must always be closed at a controlled speed. At a higher closing speed and vent weights, there is an increased risk of fingers becoming trapped, as the moving vent cannot be slowed down in a controlled manner. Furthermore, damage may be caused to the installation in the striker area.

2.3. Safety instructions for sliding units

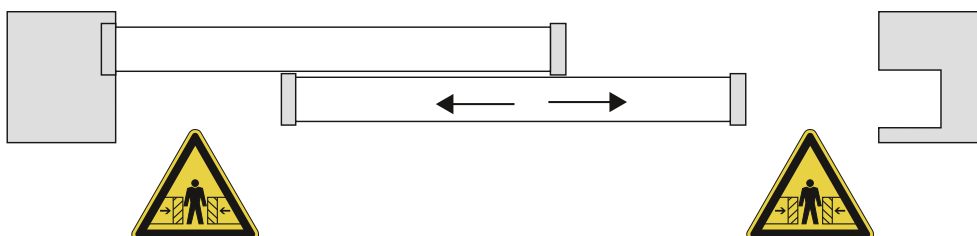


When using opening units, take note of the hazards listed below.

Danger to hands / fingers

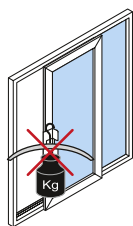


Danger for the body / head area



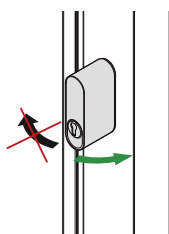
**NOTE**

Note the following advice to prevent damage to the sliding units.



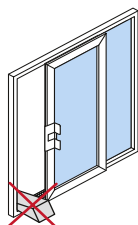
Do not load the frame and handle with additional weight.

The additional load may cause deformation of the unit frame or damage to the unit handles.



Operate the unit handles in the correct direction only and do not force them beyond the anti-turn stop.

The additional load may cause the unit handles to break.



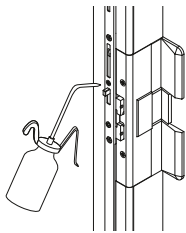
Do not wedge anything between the unit vent and unit frame.

The additional load can cause deformation of the unit frame and fittings. Fittings can be destroyed by excessive force.

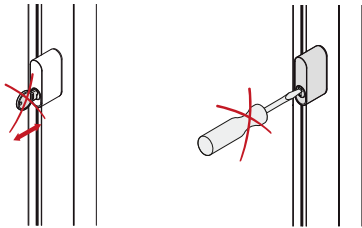
The unit vent must NOT be locked when the vent is open. Closing the unit vent when the lock is engaged can damage the fittings.

**NOTE**

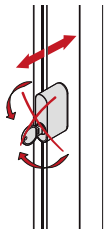
Note the following advice to prevent damage to the sliding units.



Any stiffness of the locks must be remedied immediately (oil / grease, replace if necessary).

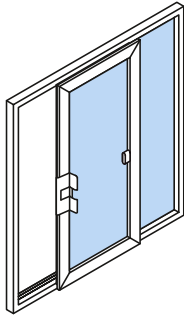


Do not pull/push the doors using inserted keys.
Do not insert any foreign objects into the keyhole.



Do not operate the handles and the keys simultaneously.

2.4. Proper use



A sliding unit consists of a unit frame installed in a fixed position in the building and multiple fixed or horizontal sliding unit vents that are guided on rollers/roller carriages along the bottom.

Incorrect use or unauthorised modification of the product may result in death or serious injury, or damage to the product and other material assets. Only original replacement parts may be used. The manufacturer / supplier shall not be liable for any damage resulting from infringement. The user alone bears the risk.

3. Overview of types for Schüco ASE 67 PD sliding units

3.1. Unit type with double track

| Overview of types | |
|-------------------|------|
| | 2A |
| Double track | |
| | 2A/1 |
| Double track | |

| Overview of types | | | |
|-------------------|----|----|----|
| | 2B | 2E | 2C |
| Double track | | | |

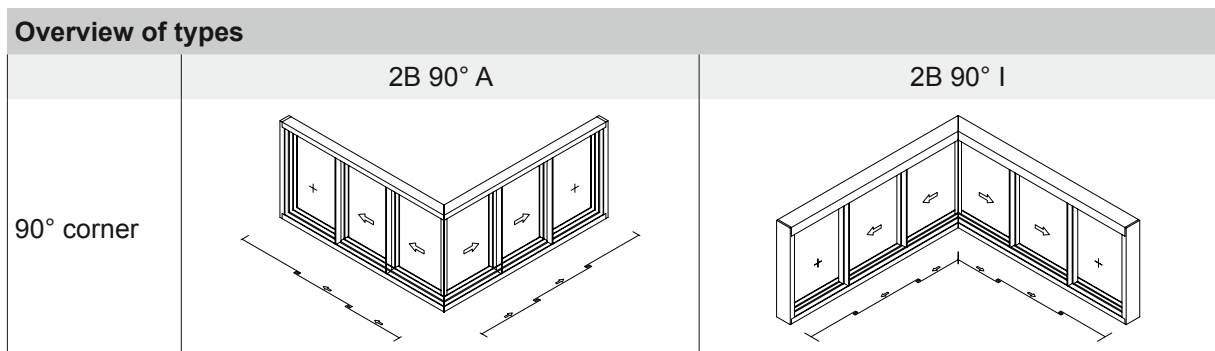
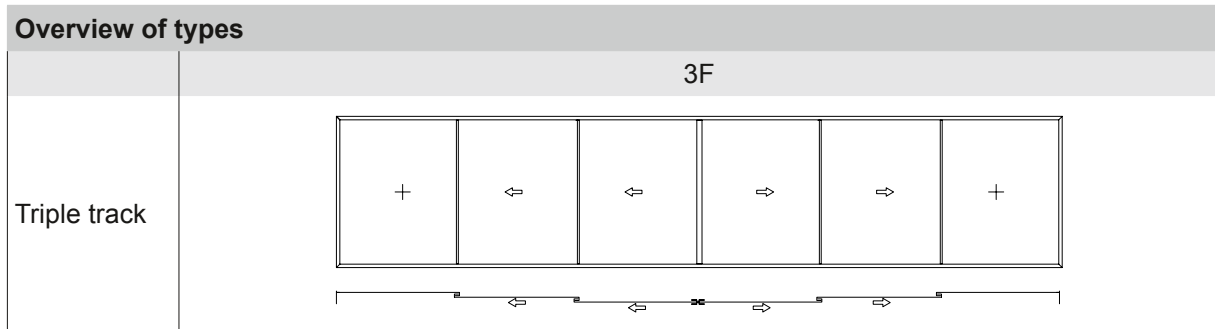
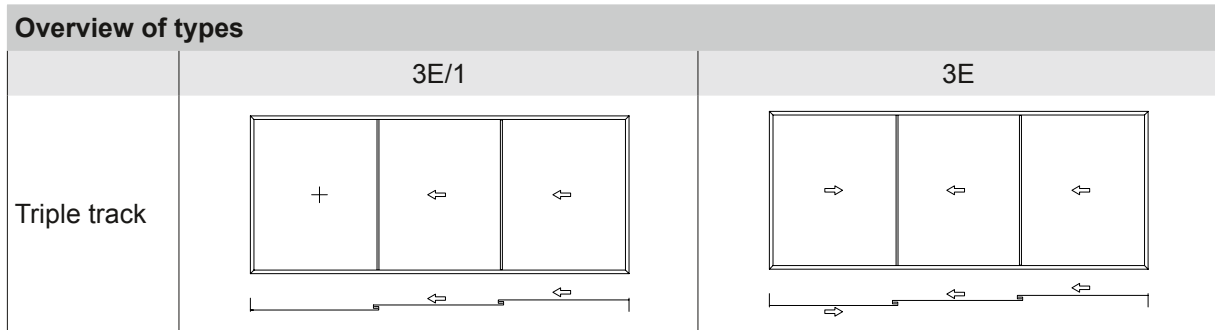
| Overview of types | |
|-------------------|------|
| | 2D |
| Double track | |
| | 2D/1 |
| Double track | |

| Overview of types | | |
|-------------------|-------------------|-------------------|
| | 2D/1 90° A | 2D/1 90° I |
| 90° corner | | |

| Overview of types | | |
|-------------------|-----------------|--|
| | 2C 90° A | |
| 90° corner | | |

| Overview of types | | |
|-------------------|-----------------|-----------------|
| | 2B 90° A | 2B 90° I |
| 90° corner | | |

3.2. Unit type with triple track



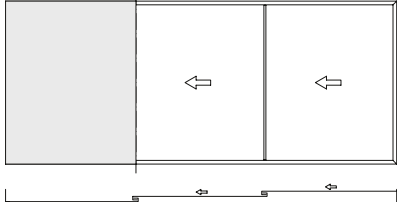
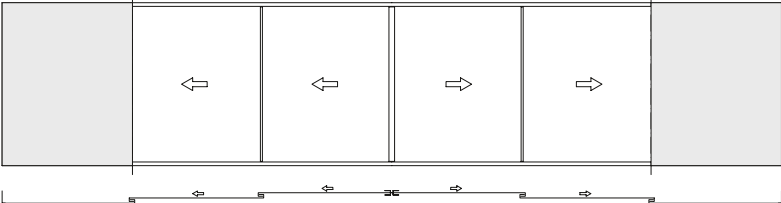
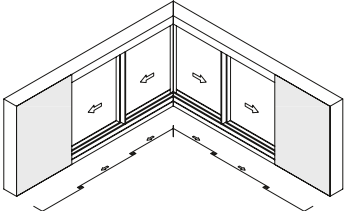
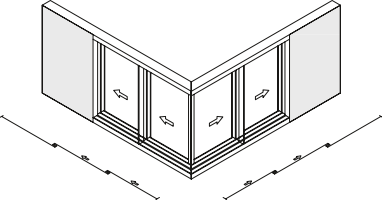
3.3. Unit type with single track - InWall

| Overview of types | |
|-------------------|--------------|
| | 1A - W |
| Single track | |
| | 1C 90° A - W |
| | |

| Overview of types | |
|-------------------|--------|
| | 1D - W |
| Single track | |

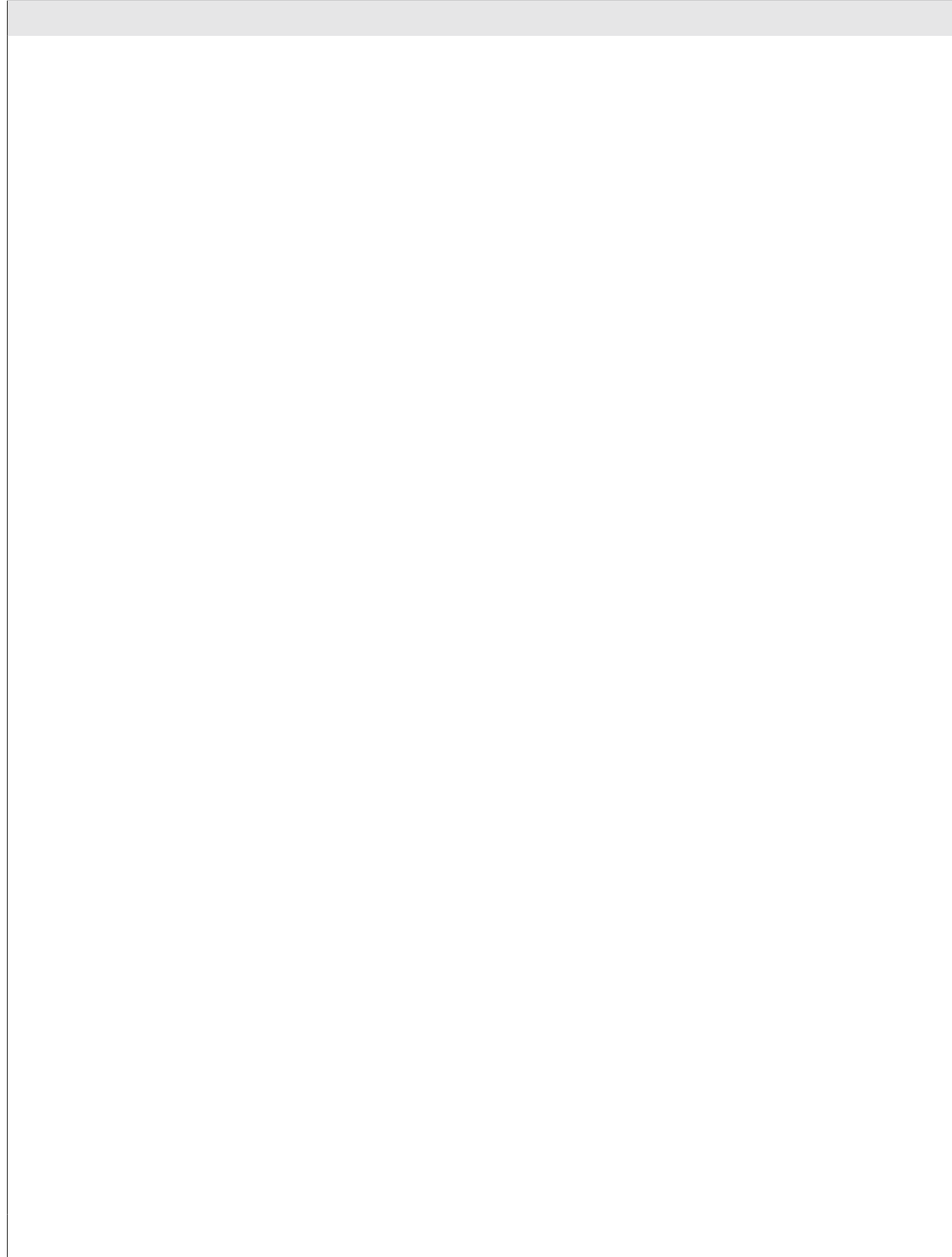
| Overview of types | |
|-------------------|--------------|
| | 1D 90° A - W |
| 90° corner | |
| | 1D 90° I - W |
| | |

3.4. Unit type with double track - InWall

| Overview of types | |
|-------------------|--|
| Double track | <p style="text-align: center;">2E/1</p>  |
| Double track | <p style="text-align: center;">2F</p>  |
| 90° corner | <div style="display: flex; justify-content: space-around;"> <div data-bbox="363 1256 882 1581"> <p style="text-align: center;">2F 90° A - W</p>  </div> <div data-bbox="882 1256 1396 1581"> <p style="text-align: center;">2F 90° I - W</p>  </div> </div> |

3.5. Unit type - freely configurable

Overview of types



4. Operation

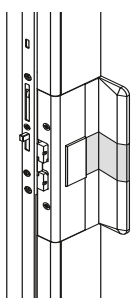
4.1. Open sliding unit



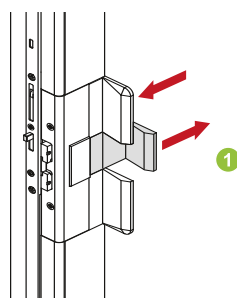
INFORMATION

Depending on the fittings, a lock is located on the handle and/or on the door knob.

Closed



Unlock

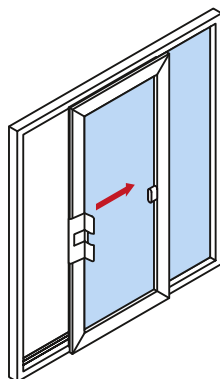
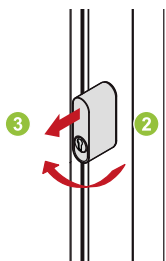


1. If present, unlock lock **2**.
To unlock the retaining catch **1**, gently push in and pull out.

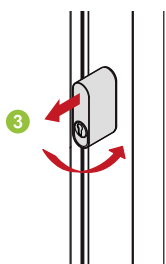
2. If present, unlock lock **2**.
Gently pull out the knob **3**, turn 90° to unlock and allow to engage.

3. Fully slide open the unit vent using the handle / door pull.

Unlock



Lock with the knob

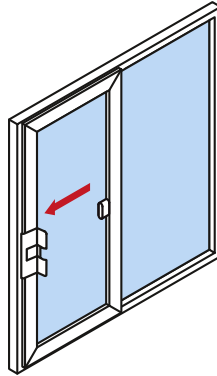
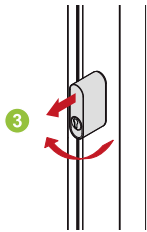


The sliding unit can be locked in the opening position provided using the knob **3**.

1. Gently pull out the knob **3**, turn 90° in the direction of the arrow to lock and allow to engage.

4.2. Close sliding unit

Unlock



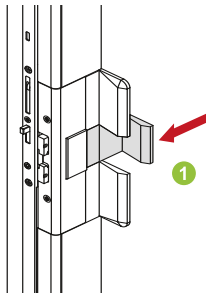
1. If present, lock the lock **3**.
Gently pull out the knob **3**, turn 90° to unlock and allow to engage.

2. Fully slide the unit vent closed using the handle / door pull and allow the retaining catch **1** to engage.

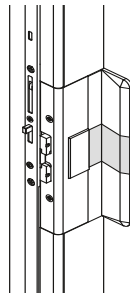
3. Gently pull out the knob **1**, turn 90° and allow to engage and lock.

If present, lock off using the lock.

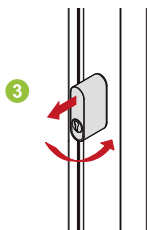
Lock



Closed



Lock



5. Maintenance

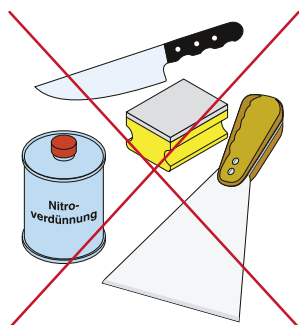
First perform the following visual checks:

- » Check all vents and accessible gaskets for irregularities and glass breakages
- » Check that all switches are intact / not damaged

5.1. Cleaning and maintenance products



When cleaning colour-coated units, observe the instructions for use of the cleaning agent.



The following items must NOT be used for cleaning:

- ▶ Tools with sharp edges, e.g. knives, metal scrapers, steel wool, the scouring side of household sponges etc. will damage surfaces.
- ▶ Aggressive cleaning fluids or solvents, e.g. cellulose thinner, nail polish remover etc. will also cause irreversible damage to unit surfaces.

Maintenance products suitable for aluminium units are available from Schüco specialists:

Aluminium maintenance kit 298 672:

- Cleaner and preservative
- Stainless steel cleaner
- Gasket cleaner
- Fittings spray
- Cleaning cloth



Maintenance products for anodised aluminium units:

Basic cleaner 298 181

For initial and basic cleaning.
Cleans and preserves the aluminium surface.



Metal polish 298 010

This cleaner for anodised surfaces restores the matt finish to the aluminium and preserves the surface (can also be used on stainless steel).



Universal aluminium cleaner 298 001

Removes stubborn grime, minor scuff marks and scratches.



5.1.1. General cleaning instructions



For the best window care, clean the window frames and gaskets at the same time as the window panes. Use a mild, non-scouring cleaning agent.

Solid substances

Plaster, mortar or similar is best removed using a wooden or plastic spatula.

Marks

Can be removed safely and without residue using a cleaning agent from our range of cleaning products for aluminium units.

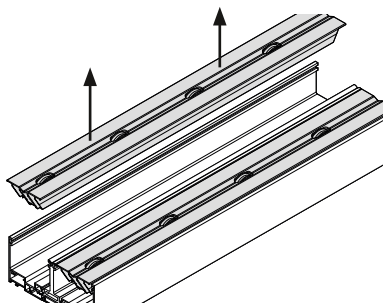


NOTE

To prevent damage, observe the instructions for use given on the cleaning agent.

5.2. Cleaning the vent and frame

5.2.1. Cleaning the tracks and drainage slots

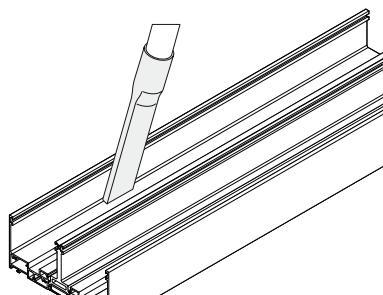


Open all the vents in the installation.

Remove and clean the roller profiles. The unlocking tool is suitable for removing the roller profiles.

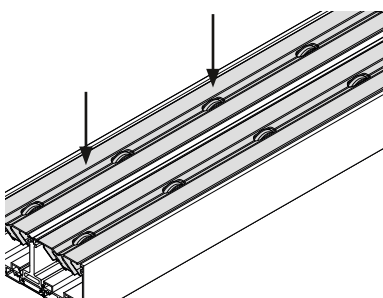
Check the rollers and drainage slots in the entrance area for dirt.

Remove any dirt using a vacuum cleaner or a suitable cleaning agent.



Blocked drainage slots can be cleaned using a cocktail stick or cotton bud.

Check the rollers for any damage and stiffness. Replace any damaged or stiff rollers.



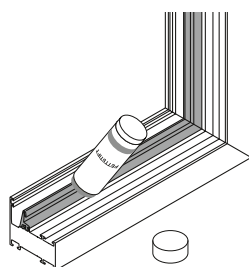
The rollers must be inserted prior to closing the sliding unit.



NOTE

Always make use of a specialist company when opening the cladding of an InWall installation, e.g. to clean the tracks

5.2.2. Maintenance of gaskets



- ▶ Regularly clean the gaskets. Special maintenance kits help to keep material elastic and to prevent premature ageing
- ▶ Check the gaskets for damage



NOTE

Ask a Schüco specialist to replace any defective gaskets.

5.3. Maintenance

5.3.1. Maintenance contract

If these operating instructions do not answer all your questions, refer to your Schüco specialist for help. In addition to providing expert advice, a specialist company can advise you on particular modifications and repairs.

Schüco specialists and Schüco International KG can offer you the additional benefit of a maintenance contract. Under the terms of the maintenance agreement, they will undertake all maintenance and repair work. Your units will be maintained at their optimum functional performance and value without the need for additional resources.



NOTE

The fittings in the window, door and façade units require specialist, systematic maintenance, care and inspection to ensure they retain their value and remain fit for use and safe. Therefore, it is recommended that you conclude a corresponding maintenance contract for windows, doors and façades.

Always make use of a specialist company when opening the cladding of an InWall installation, e.g. to clean the tracks.



DANGER

- ▶ Risk of injury due to maintenance work carried out incorrectly.
- ▶ Incorrect maintenance could lead to severe injury or damage to property.



NOTE

All repairs and modifications should be undertaken by a Schüco specialist or by Schüco International KG directly. Only repairs by a specialist using “original parts” ensure the continued correct operation of your Schüco units.

To conclude a maintenance contract with Schüco International KG, please contact Schüco directly:

Tel. +49 521 783 1111

serviceteam@schueco.com

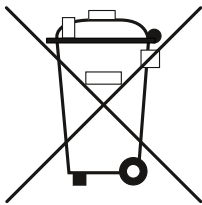
6. Decommissioning and disposal

6.1. Decommissioning

The units should be dismantled by a specialist company.

6.2. Disposal

Commission a specialist to dispose of the units professionally.



The materials used can be recycled. Observe the environmental requirements with regard to recycling, re-use and disposal of operating materials and components in accordance with the local, country-specific and international current technical regulations and official regulations. Make a contribution towards protecting our environment and dispose of the device at a collection point.



en Original instructions

Schüco International KG
Karolinenstraße 1-15
33609 Bielefeld
Tel. +49 (0)521 783-0
Fax +49 (0)521 783-451
www.schueco.com



Company stamp