



Printed on 50% post consumer waste (PCW) fiber manufactured using wind power.

interface.com

United States Headquarters
1280 West Peachtree Street NW
Atlanta, GA 30309
1.800.634.6032

Canadian Headquarters
233 Lahr Drive
Belleville, ON K8N 5S2
1.800.267.2149 ext. 52128

CIM# IFS00925 05/2023



Climate change is undeniable. And reversible. Our mission is to prove it. Join the #ClimateTakeBack and help create a climate fit for life.

Moven-Gradience Collection

WG 100
WG200

Interface®



Blend in to stand out.

Take a look at the Woven Gradience™ Collection.

With Woven Gradience, color transitions effortlessly through a space. Calm or invigorate, soothe or surprise with subtle spectrums that create customizable moments across the floor. The woven textile aesthetic brings familiar comforts into productive spaces while offering the flexibility to play it safe—or push what's possible.

Sleek, tailored and timeless, these carpet squares can remain reserved with WG100 standing solidly on its own through six warm neutrals and eight sophisticated accents. Or combine with WG200 to create gradients on the floor for a more vivid experience. With just two products, you can instantly connect and define space.

No stranger to innovation, Interface carpet tile has the lowest carbon footprint in the industry—before any offsets. And like all Interface products, the Woven Gradience Collection is third-party verified carbon neutral across the full product life cycle through our Carbon Neutral Floors™ program.



Accent ▪ Transition ▪ Neutral ▪ Transition ▪ Neutral



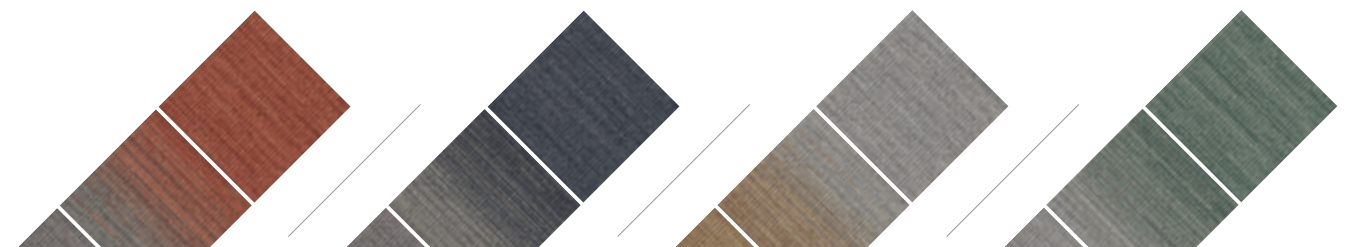
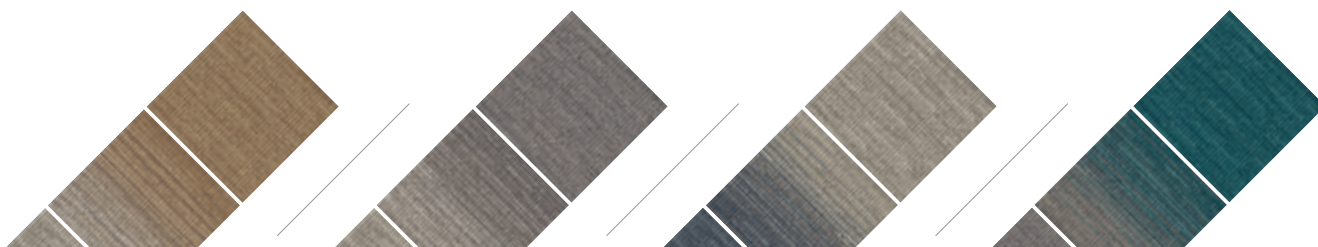
WG100
Accent

WG200
Accent/Neutral

WG100
Neutral

WG200
Neutral/Neutral

WG100
Neutral





(COVER) **PRODUCT** WG100 **COLORS** 108048 LINEN, 108057 BLUE SAGE **INSTALLED** BRICK
(COVER) **PRODUCT** WG200 **COLOR** 107665 LINEN/BLUE SAGE **INSTALLED** PATTERN BY TILE

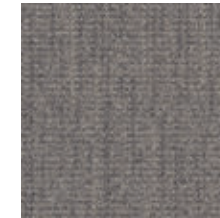
PRODUCT WG100 **COLORS** 108052 UMBER, 108053 ASH, 108049 GREIGE **INSTALLED** ASHLAR
PRODUCT WG200 **COLORS** 107663 UMBER/ASH, 107664 ASH/GREIGE **INSTALLED** PATTERN BY TILE
PRODUCT WG100 **COLOR** 108061 NAVY **INSTALLED** MONOLITHIC



WG100 Color Range



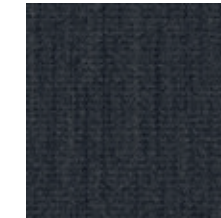
108048 LINEN



108049 GREIGE



108050 VOLCANIC



108051 ONYX



108052 UMBER



108053 ASH



108054 WILD CURRANT



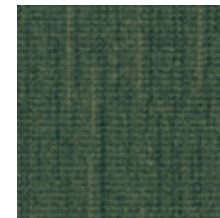
108055 CLAY



108056 AMBER



108057 BLUE SAGE



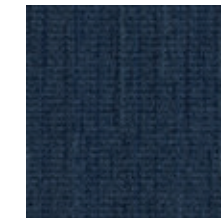
108058 PINE



108059 CARIBBEAN



108060 SLATE



108061 NAVY

Specifications

Modular, 50cm x 50cm	13127
Yarn Manufacturer	Aquafil
Yarn System	100% Recycled Content Nylon
Color System	100% Solution Dyed
Construction	Tufted Textured Loop
Preservative Protection	Intersept®
Soil/Stain Protection	Protekt ² ®
Pile Thickness	.095 in., 2.4 mm
Pile Density	8,716 oz/yd ³
Total Recycled Content	Up to 84%
Indoor Air Quality	CRI Green Label Plus #GLP0820

View the full product specification on interface.com

Installation Methods



ASHLAR



BRICK



MONOLITHIC



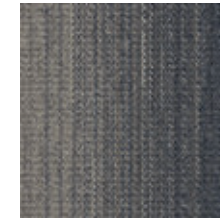
BROWSE IMAGES
ORDER SAMPLES



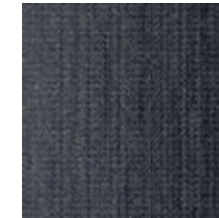
WG200 Color Range



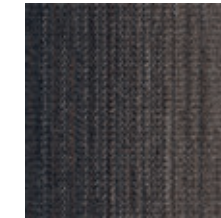
107659 LINEN/GREIGE



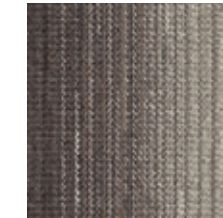
107660 GREIGE/
VOLCANIC



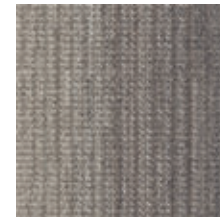
107661 VOLCANIC/ONYX



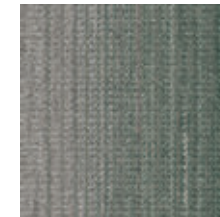
107662 ONYX/UMBER



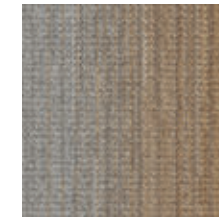
107663 UMBER/ASH



107664 ASH/GREIGE



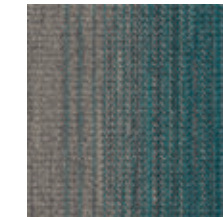
107665 LINEN/BLUE
SAGE



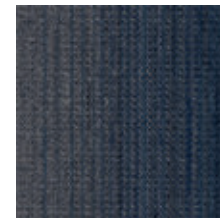
107666 LINEN/AMBER



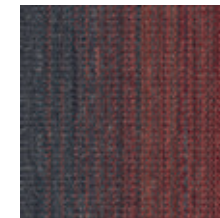
107667 GREIGE/CLAY



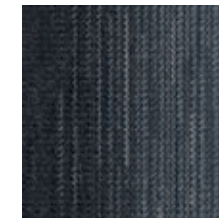
107668 GREIGE/
CARIBBEAN



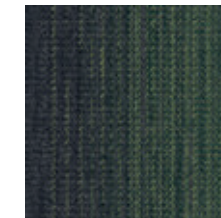
107669 VOLCANIC/NAVY



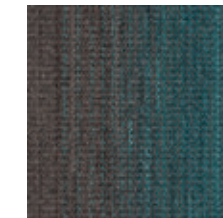
107670 VOLCANIC/WILD
CURRANT



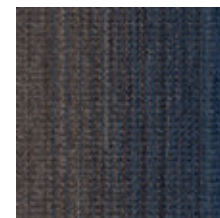
107671 ONYX/SLATE



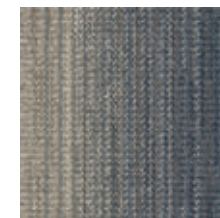
107672 ONYX/PINE



107673 UMBER/
CARIBBEAN



107674 UMBER/NAVY



107675 ASH/SLATE



107676 ASH/AMBER

Specifications

Modular, 50cm x 50cm	13128
Yarn Manufacturer	Aquafil
Yarn System	100% Recycled Content Nylon
Color System	100% Solution Dyed
Construction	Tufted Textured Loop
Preservative Protection	Intersept®
Soil/Stain Protection	Protek12®
Pile Thickness	.097 in., 2.4 mm
Pile Density	8,536 oz/yd ²
Total Recycled Content	Up to 84%
Indoor Air Quality	CRI Green Label Plus #GLP0820

View the full product specification on [interface.com](https://www.interface.com)

Installation Methods



ASHLAR



BRICK



MONOLITHIC



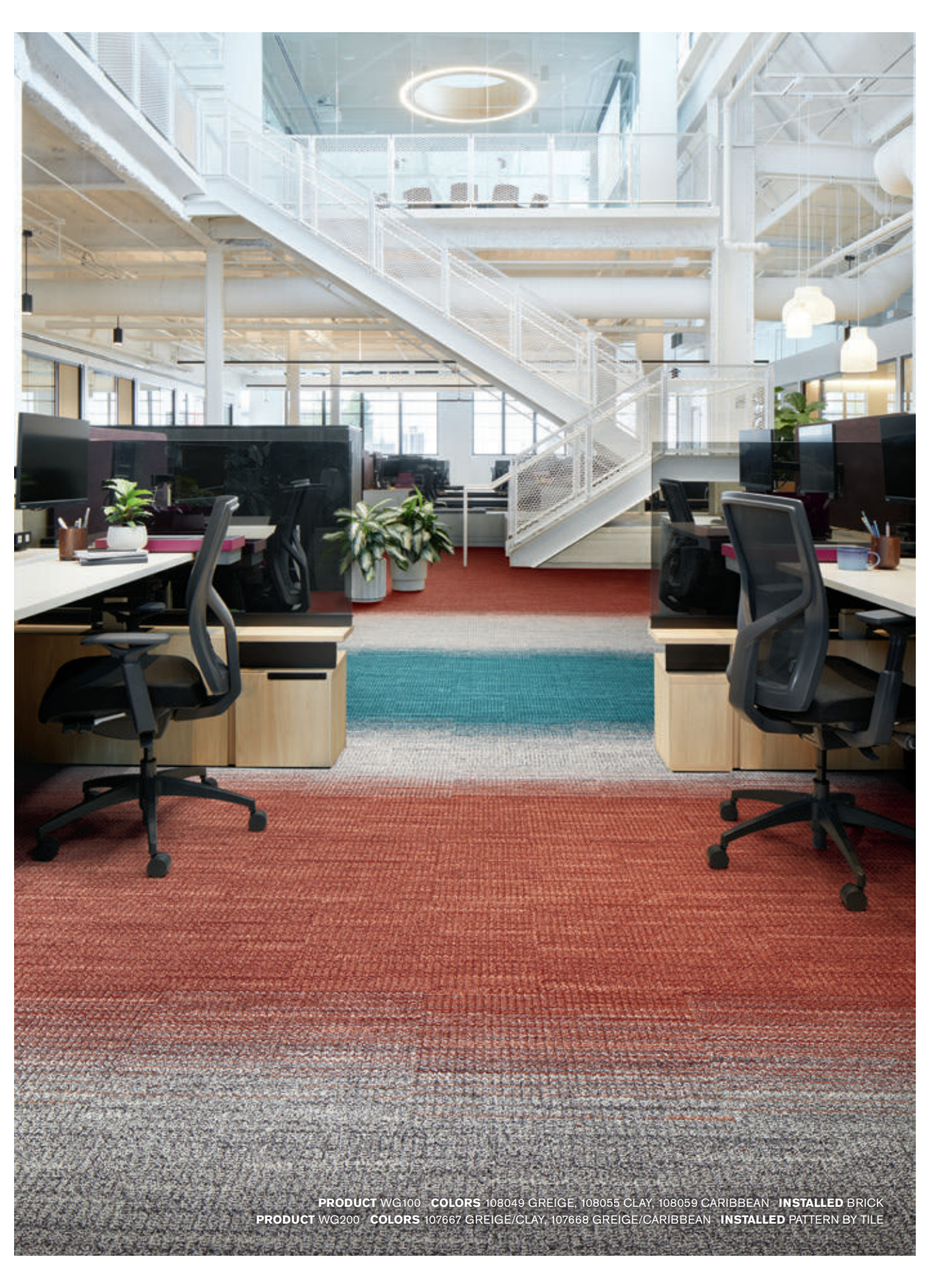
NON DIRECTIONAL



BROWSE IMAGES
ORDER SAMPLES



PRODUCT WG100 COLORS 108052 UMBER, 108059 CARIBBEAN INSTALLED BRICK
PRODUCT WG200 COLOR 107673 UMBER/CARIBBEAN INSTALLED PATTERN BY TILE



PRODUCT WG100 COLORS 108049 GREIGE, 108055 CLAY, 108059 CARIBBEAN INSTALLED BRICK
PRODUCT WG200 COLORS 107667 GREIGE/CLAY, 107668 GREIGE/CARIBBEAN INSTALLED PATTERN BY TILE

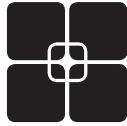


Why Our Modular Flooring?



Modular Flooring

Performance and flexibility. Interface's standard backing systems set the industry standard for modular performance. Tiles stay on the floor with no upcurl, no tapping and no rippling effect, yet are easy to selectively replace. Our modular carpet is easier to handle than bulky roll carpet and produces an average of just 3-4% waste compared to roll carpet's average of 14%. And it installs seamlessly with our LVT, no transition strips needed.



TacTiles™

No glue installation. Our revolutionary TacTiles installation system eliminates the need for glue, adhering tiles securely together to form a floor that “floats” for greater flexibility, easier replacement and long-term performance. The result? Less mess, less waste and virtually no VOCs, not to mention an environmental footprint that is over 90% lower than that of traditional glue adhesives. TacTiles are approved for use on GlasBac™, CQuest™GB, CQuest™Bio and CQuest™BioX.



Intersept®

Mold protection. Our proprietary preservative, Intersept, protects our modular carpet against mold growth and odor-causing bacteria—guaranteed. Intersept treated carpet, with proper maintenance, shows no mold or bacterial growth when tested per the ASTM E2471 Standard Test Method. Intersept is EPA approved for safe use in carpet, water insoluble and contains no halogens, heavy metals, phenols or formaldehyde. Intersept is standard in Interface carpet tile products backed with GlasBac, CQuestGB, ReadyBac™ and CushionBac Renew™.



ReEntry™

Recyclable. Through our ReEntry program we reclaim and recycle our carpet tile and Sound Choice™ LVT. ReEntry is the only third party certified recycling system among North American flooring manufacturers.



Sustainability Transparency

Transparency and certified sustainability leadership come standard on Interface products. We enlist outside partners to help us evaluate the entire product lifecycle and reduce the environmental and human health impact of our flooring. And, carpet products made in our US facilities are made with 99% renewable energy.



Help Lower Your Carbon Footprint

Like all the flooring products we sell, Interface carpet tile is carbon neutral across its full product life cycle through our third party verified Carbon Neutral Floors™ program. To find out more, visit interface.com/carbonneutral



Environmental Product Declaration (EPD) – A statement of product ingredients and environmental impacts over the entire life cycle of a product. A comprehensive life cycle assessment (LCA) is performed to ISO standards to develop an EPD, after which both the EPD and LCA must be third party verified.



Health Product Declaration (HPD) – A transparency tool for evaluating whether a product supports Green Chemistry. As part of our work on Health and Materials, Interface continuously reduces the environmental and health impacts of our products through elimination of materials of concern.



CRI Green Label Plus – An independent testing program that identifies carpet and adhesives with very low emissions of VOCs to help improve indoor air quality.



NSF 140 Sustainable Carpet Assessment – The only carpet sustainability standard in North America that evaluates the environmental impact of carpet for its entire lifecycle.

📍 Samples

Register and order samples at interface.com. Not near a computer? You can also request samples by calling one of the numbers below.

United States
1.877.605.1500

Canada
1.866.398.3192

interface.com

Do more on interface.com

- Browse products and order samples
- Save and share favorites
- See images of products in a variety of room scenes
- Browse floor designs, change colors, upload your own image, download and share
- Get full specifications, sustainability certifications and more
- Check order status and inventory availability
- Sign up to get the latest information on Interface products and news

InterCircle Sample Return

Help us close the loop on the carpet sampling process. Through our InterCircle Sample Return program, sample materials stay out of the landfill and are re-used as samples until it is time to recycle them into new carpet. By reducing sample production material and diverting old materials from the landfill, we can reduce our overall environmental footprint.

Call 1.877.605.1500 (U.S.) or 1.866.398.3192 (Canada) to order a sample return bag with a prepaid return label.

We have tried our very best to accurately represent product colors. However, due to the nature of printed materials, color of actual products may vary slightly. Please request a sample to see actual product color.

All product specifications reflect averages derived from product sample testing, are subject to normal manufacturing and testing tolerances and inherent pattern variances, and may be changed without notice. For more information about these and other important attributes of the product(s) described herein, including recycled content and product warranty information, please see interface.com/disclaimer.