

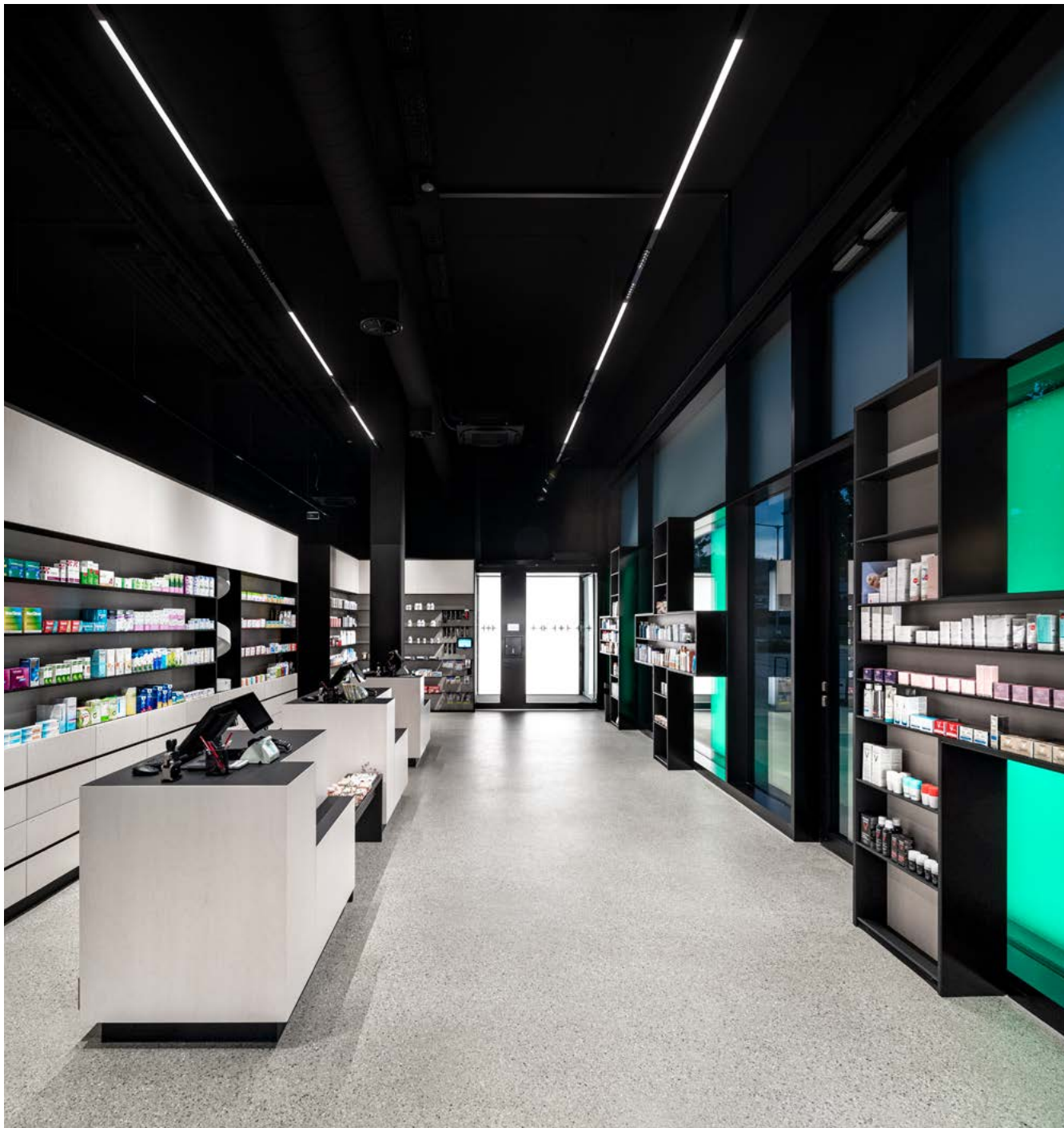


ZUMTOBEL



SUPERSYSTEM INTEGRAL COLLECTION

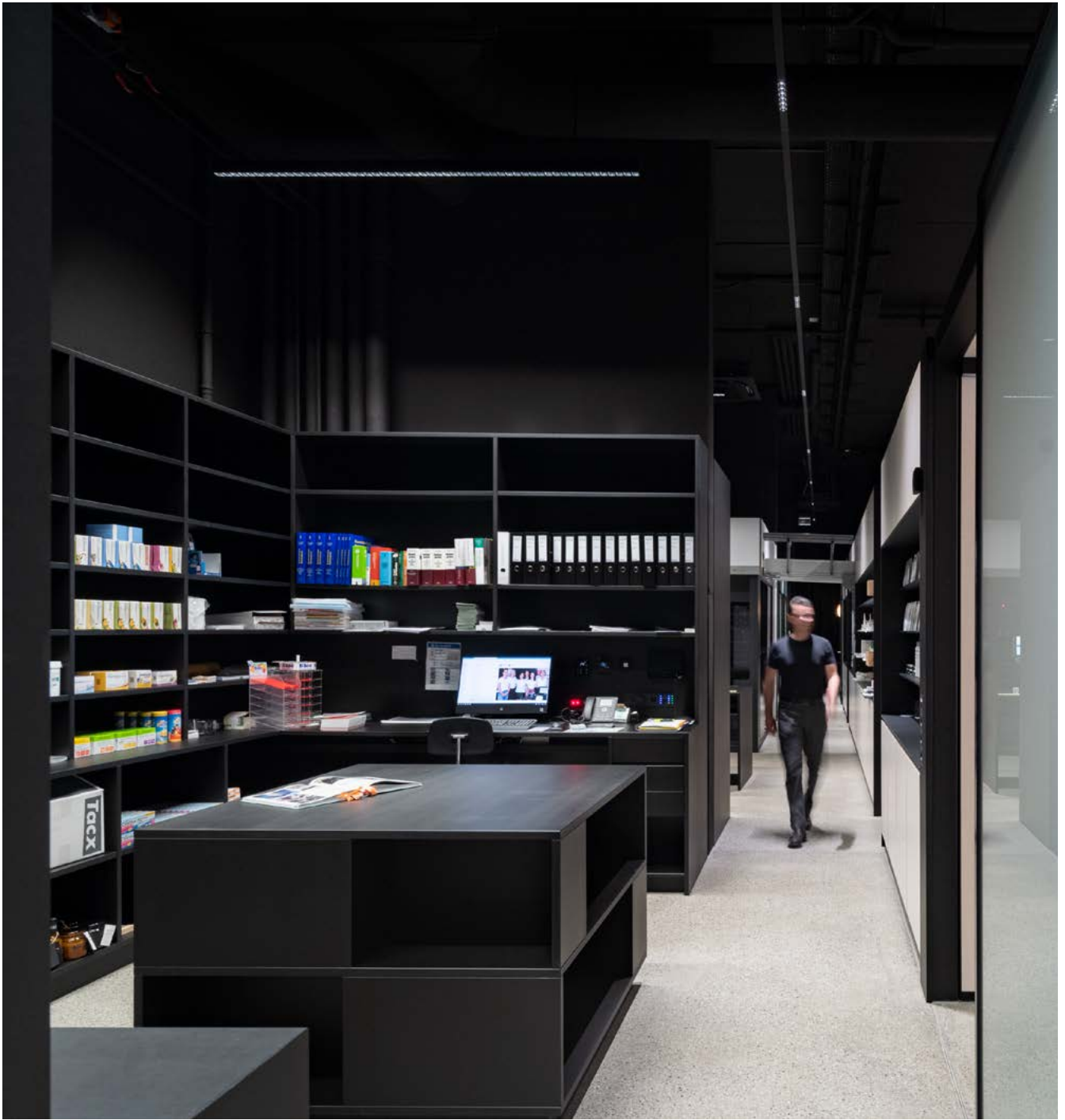
SEAMLESS AND LINEAR



Pharmacy Tosters, Feldkirch | AT

Architect: Zaffignani Architektur GmbH, Weiler | AT

CI and cross installation design: Atelier Andrea Gassner, Feldkirch | AT





N O M E N E S T O M E N

Integral. Because variety integrates perfectly into architecture.

The defining feature of the entire product group is seamless linearity – regardless of whether SUPERSYSTEM is used integrally as a single luminaire or installed on a track. Surface-mounted, recessed or pendant. Even with a channel, if required. And for the first time, this solution can be used for all types of lighting, from horizontal to vertical, from indirect to accent lighting.



SUPERSYSTEM integral Synchro Gimbal
and LED maxi Spotlight | 3-phase track

"The comprehensive planning tool is based on the poetic idea of stringently miniaturising the spotlight heads, enabling them to be perfectly integrated into a continuous linear structure. The system magically emits light from a slender groove as a recessed or track fitting. SUPERSYSTEM integral even makes it possible to adapt existing track installations, which improves efficiency and saves resources – and helps this system make an important contribution as a sustainable design solution."

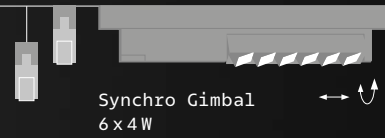


Harald Gründl,
Designer, E00S | AT

**SURFACE-MOUNTED AND
PENDANT LUMINAIRES**

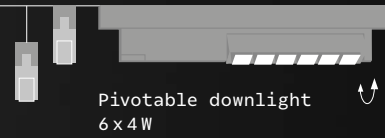
3-phase AC track
U and H profile

Accent lighting
Synchro Gimbal



Synchro Gimbal
6 x 4 W

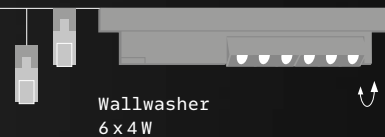
Horizontal lighting
Downlights



Pivotal downlight
6 x 4 W

Indirect lighting

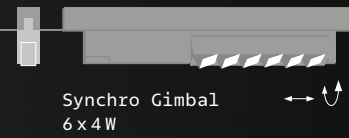
Wallwashing



Wallwasher
6 x 4 W

RECESSED LUMINAIRES

Accent lighting
Synchro Gimbal



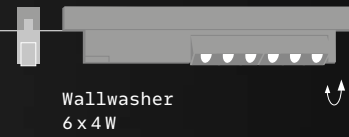
Synchro Gimbal
6 x 4 W

Horizontal lighting
Downlights



Pivotal downlight
6 x 4 W

Wallwashing

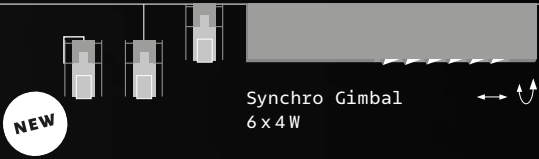


Wallwasher
6 x 4 W

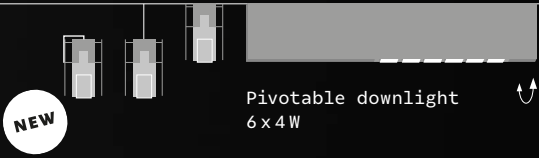
3-phase track AC channel
U and H profile

Surface-mounted
luminaire

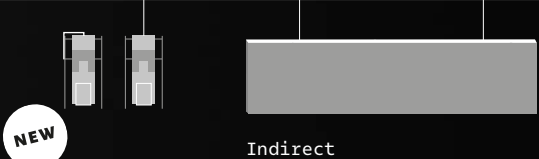
Recessed
luminaire



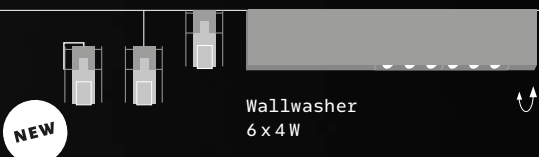
Synchro Gimbal
6 x 4 W



Pivotal downlight
6 x 4 W



Indirect
15 W



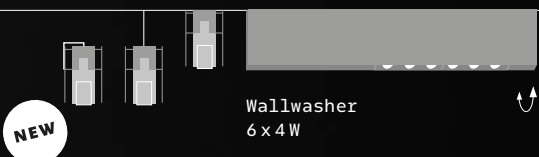
Wallwasher
6 x 4 W



Downlight Q
surface-mounted
6 x 4 W



Downlight Q
recessed luminaire
6 x 4 W, 9 x 4 W



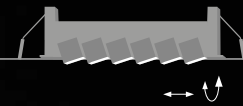
Wallwasher Q
surface-mounted
9 x 4 W



Wallwasher Q
recessed luminaire
6 x 4 W, 9 x 4 W



Synchro Gimbal
6 x 4 W



Synchro Gimbal
recessed luminaire
6 x 4 W



Pivotal downlight
6 x 4 W



Recessed downlight
3 x 4 W



Recessed downlight
6 x 4 W



Recessed downlight
9 x 4 W



Wallwasher
6 x 4 W



Recessed wallwasher
9 x 4 W



Recessed
Stand-alone

Surface-mounted
3-phase track



Pendant
3-phase track
with channel cover

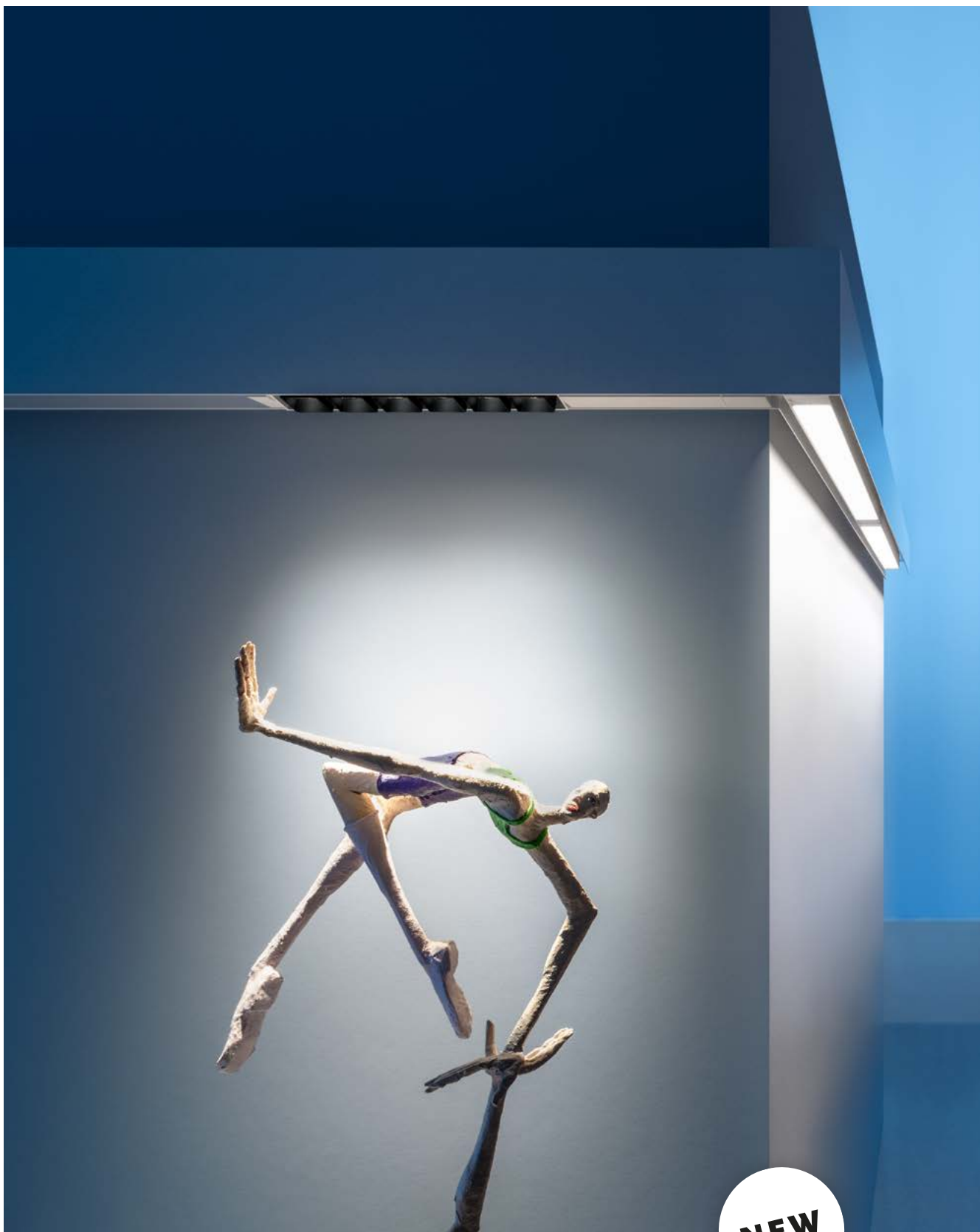


Recessed
3-phase track
in a channel



Surface-mounted Downlight
Recessed Downlight
Wallwasher

NEW



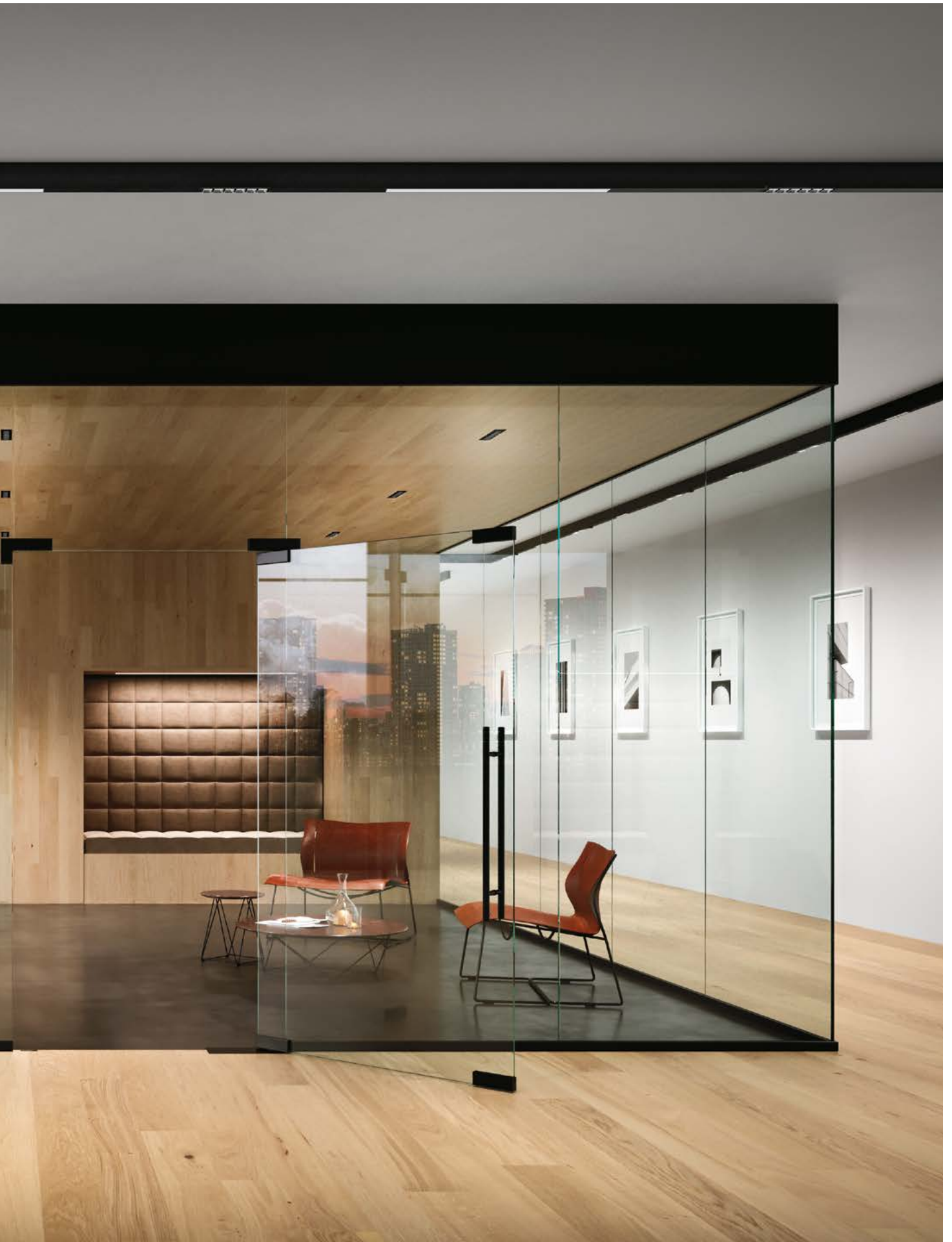
NEW

Surface-mounted wall luminaire
(3-phase track in the trunking)











Surface-mounted wall luminaire
(3-phase track in the trunking)





A NEW LOOK FOR TRACKS

Integral. Because the lighting is quickly modernised.

A track is still as good today as it has always been. That is why it is now being reused to modernise lighting with the help of SUPERSYSTEM. Yet rather than any kind of mishmash, the result is a thoroughly straightforward solution. Very economical and very efficient. And the architectural benefit? Both tracks and stand-alone luminaires speak the same design language.



On a line with the 3-phase track

All the luminaires in the SUPERSYSTEM integral collection and even the adapters of the SUPERSYSTEM spots form a continuous line. If desired, the gaps can be closed with a blind cover.

With a channel cover

For a closed lighting solution that is reduced to an absolute minimum, both the new luminaires and the channel cover are simply clicked on.

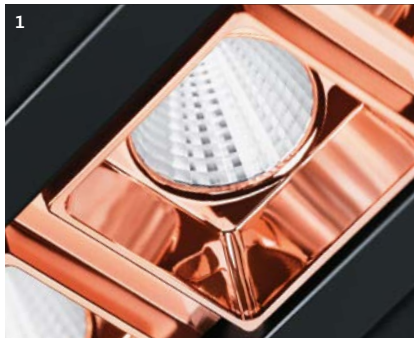


PURE DESIGN

Integral. Because everything fits together perfectly.

Each individual luminaire fits the dimensions of the track. Fixed, rotatable and pivotable – the difference is hardly visible on the outside. Even the wallwasher blends discreetly into the system.

High-quality surfaces complete the minimalist look, which nevertheless offers a high degree of personalisation. Luminaires and base reflectors can be combined in any colour.



- 1 Copper base reflector
- 2 Device box with lock
- 3 Synchro Gimbal function
- 4 Aluminium-sputtered base reflector

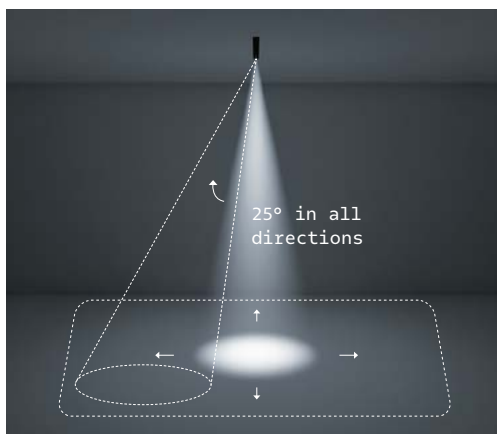
Luminaire and cover:
Black, White

Base reflector:
Black, White, Aluminium-sputtered, Copper

SUPERSYSTEM integral Synchro Gimbal
Blind cover | 3-phase track | surface-mounted



LUMINAIRES WITH SYNCHRO GIMBAL FUNCTION



THE NEW GIMBAL ACCENT LIGHTING

For a long time it seemed impossible to create a rotating cone of light with a linear luminaire. Now SUPERSYSTEM integral shows how it can be done, as synchronously tiltable reflectors and a pivotable light head rise to the challenge. The cones of light are homogeneous, are available in different beam angles and can be moved in all directions. This is precisely alignable accent lighting that always looks linear.



SYNCHRO GIMBAL TRACK

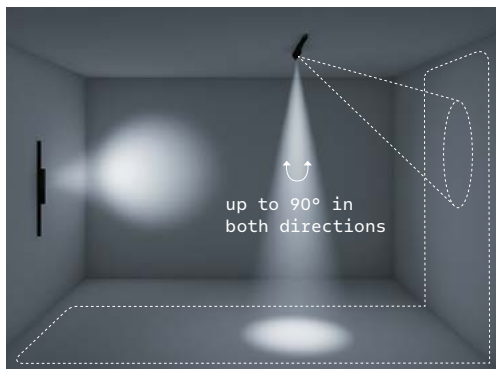


SYNCHRO GIMBAL RECESSED LUMINAIRE

Function	synchronous tilting up to 2x25° pivots up to 2x25° in the channel pivots up to 2x90° on the track	synchronous tilting up to 2x25° pivots up to 2x25°
Dimensions	398 x 35 x 76 mm	230 x 50 x 47 mm
Mounting	3-phase track with/without channel surface-mounted, pendant, recessed	installation with or without frame
System capacity	6 x 4 W LED	6 x 4 W LED
Colour temperature	2700 K, 3000 K, 4000 K; SDCM2	3000 K, 4000 K; SDCM2
Colour rendering	Ra > 90	Ra > 90
Luminaire luminous flux	1450 to 1800 lm	1450 to 1800 lm
Lighting angle	Spot 12°, Flood 27°, Very Wideflood 49°	Spot 12°, Flood 27°, Very Wideflood 49°
Glare limitation	in non-tilted position: UGR < 0; viewing angle < 45°	in non-tilted position: UGR < 0; viewing angle < 45°
Base reflector colour	white, black, copper, aluminium-sputtered	white, black, copper, aluminium-sputtered
Control	DALI dimmable, basicDIM Wireless	DALI dimmable, basicDIM Wireless

SUPERSYSTEM integral pivotable downlight
Blind cover | 3-phase track | surface-mounted

LUMINAIRES WITH PIVOTABLE LIGHT HEAD



DOWNLIGHTS FOR ILLUMINATING HORIZONTAL AND VERTICAL SURFACES

The light heads can be moved on the track in both directions by 90 degrees. They can also be moved 25 degrees in both directions in the channel. This allows recessed luminaires to fulfil a wide variety of lighting tasks. SUPERSYSTEM integral rounds off this flexible type of vertical and horizontal surface lighting with a high level of brilliance and outstanding glare control.



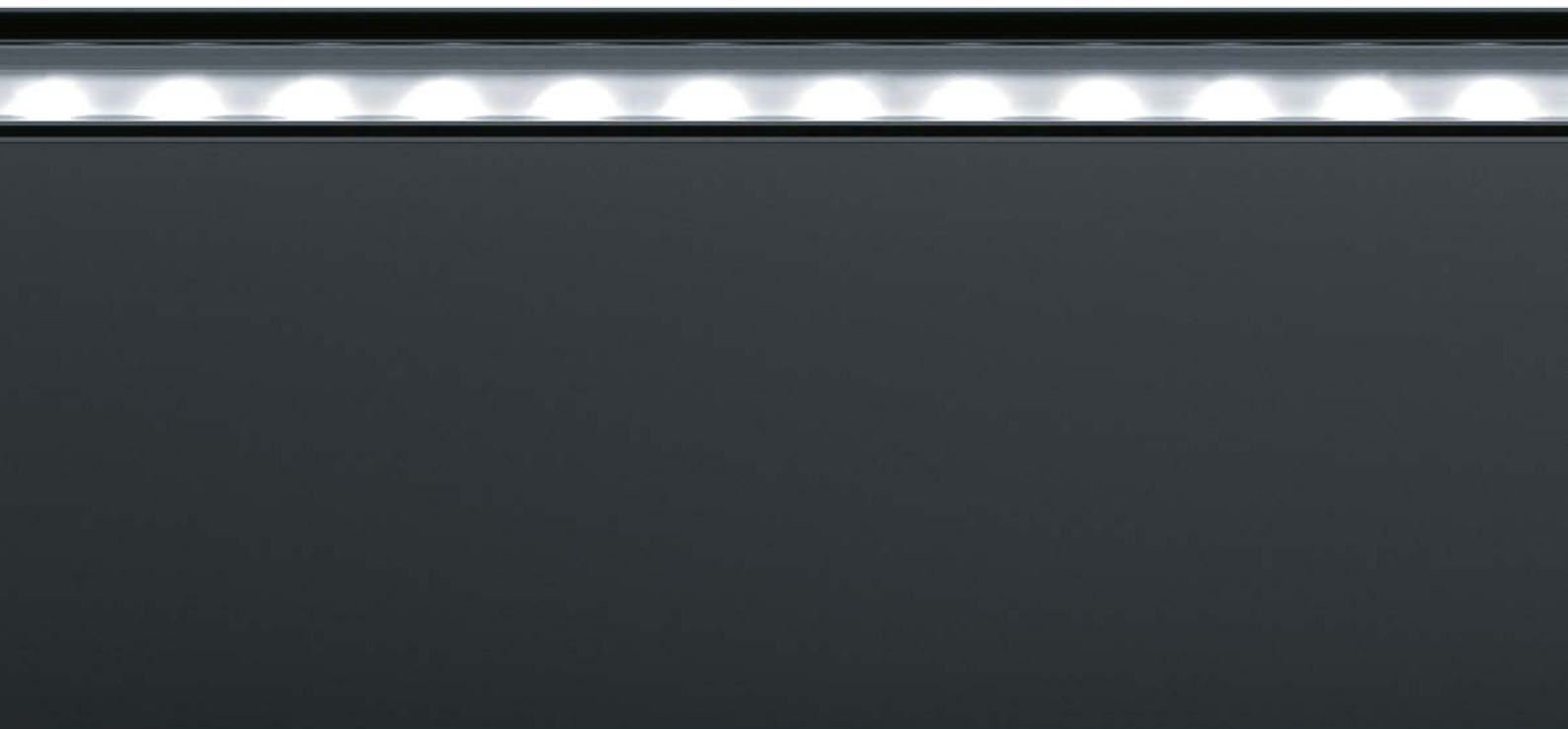
PIVOTABLE DOWNLIGHT

Function	pivots up to 2x25° in the channel pivots up to 2x90° on the track
Dimensions	398 x 35 x 76 mm
Mounting	3-phase track with/without channel surface-mounted, pendant, recessed
System capacity	6 x 4 W LED
Colour temperature	3000 K, 4000 K; SDCM2
Colour rendering	Ra > 90
Luminaire luminous flux	1700 to 2100 lm
Lighting angle	Spot 12°, Flood 27°, Very Wideflood 49°
Glare limitation	in non-tilted position: UGR < 0; viewing angle < 45°
Base reflector colour	white, black, copper, aluminium-sputtered
Control	DALI dimmable, basicDIM Wireless

WALL MOUNTING

The option to mount the downlight horizontally or vertically on the wall means that areas like window displays in shops can also be highlighted from the side. This is because the pivoting mechanism remains unrestricted at all times to ensure maximum flexibility.

SUPERSYSTEM integral indirect
3-phase track | H profile | channel | pendant

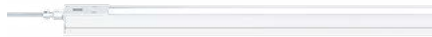


INDIRECT LIGHTING



THE LIGHT COMPONENT FOR WELL-BEING

Direct and indirect luminaires in the H track simultaneously fulfil essential lighting tasks and create a cosy ambience. Homogeneously illuminated ceilings are thereby able to exploit all the possibilities of direct lighting. With total linearity. Power for all luminaires is provided via the 3-phase track, which also transmits control commands for individual lighting scenarios.



INDIRECT LUMINAIRE

Dimensions	1300 x 37 x 28 mm, device box 160 x 35 x 76 mm ideal distance to ceiling > 0.5m
Mounting	in H profile and channel
System capacity	15W LED
Colour temperature	3000 K, 4000 K; SDCM3
Colour rendering	Ra > 80
Luminaire luminous flux	1980 to 2070lm indirect
Light distribution	Batwing 2 x 58°
Control	DALI dimmable, basicDIM Wireless



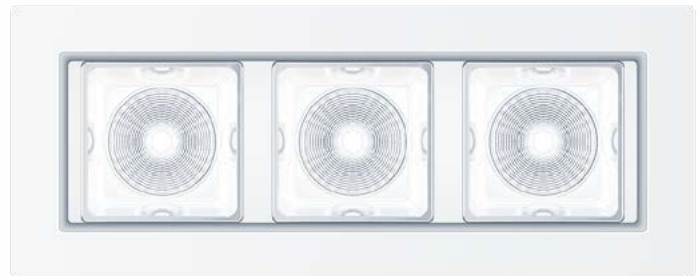
MODULAR DESIGN

At the top, the indirect luminaire. At the bottom, in a row with the direct modules, the device box. And in the middle, the H track. All beautifully concealed in a channel. A rich variety of cutting-edge lighting technology comes together in the smallest of spaces.

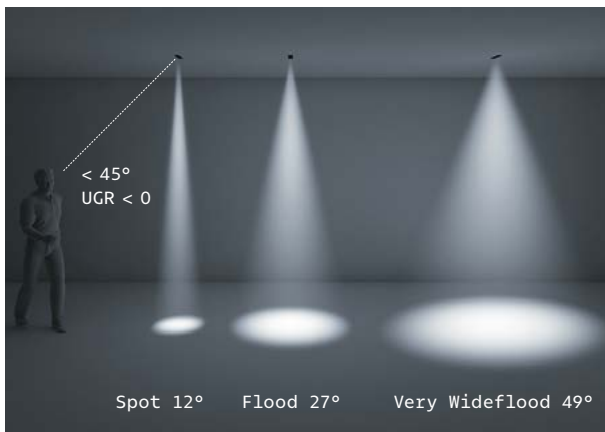
SUPERSYSTEM integral recessed downlight
9x4W | aluminium-sputtered reflector | black frame



SUPERSYSTEM integral recessed downlight
3x4W | white reflector | white frame



RECESSED DOWNLIGHT



HORIZONTAL SURFACE LIGHTING WITH EMERGENCY LIGHTING OPTION

SUPERSYSTEM integral offers lighting designers plenty of scope for illuminating horizontal surfaces. Various lumen packages, lighting angles and colour constellations help establish this compact downlight as a highly adaptable lighting tool. Even safety lighting can be almost invisibly integrated thanks to the emergency lighting option. With low luminance levels and a high level of visual comfort, the SUPERSYSTEM integral collection is also ideal for use in foyers, access zones and office spaces.



SUPERSYSTEM integral recessed downlight
6x4W | copper reflector | black frame



RECESSED DOWNLIGHT

Dimensions	DF3: 125x50x47mm - Replacement for downlights with a diameter of 68mm DF6: 230x50x47mm - Replacement for downlights with a diameter of 100mm 140mm DF9: 335x50x47mm - Replacement for downlights with a diameter of 140mm 190mm
Mounting	recessed with frame
System capacity	3x 6x 9x4W LED
Colour temperature	2700K, 3000K, 4000K; SDCM2
Colour rendering	Ra > 90
Luminaire luminous flux	DF3: 800 to 100lm DF6: 1700 to 2000lm DF9: 2700 to 3000lm
Lighting angle	Spot 12°, Flood 27°, Very Wideflood 49°
Glare limitation	UGR < 0; viewing angle < 45°
Base reflector colour	white, black, copper, aluminium-sputtered
Control	DALI dimmable, basicDIM Wireless emergency escape lighting (single and central battery)

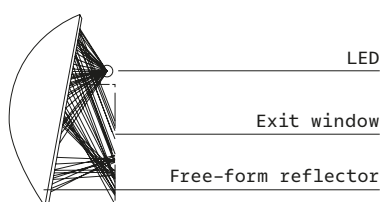


WALLWASHER



ASYMMETRICAL ILLUMINATION OF VERTICAL SURFACES WITHOUT LIGHT SCATTER

The miniaturised version of the liteCarve® free-form reflector now makes it possible. This solution emits 100 percent of the light directly, purposefully and evenly onto the vertical surface – with no glare and no light scatter on the front wall or ceiling. The integration of the design is just as sophisticated. The wallwasher fits precisely into the lines of the SUPERSYSTEM integral collection – both on the track and as a stand-alone version.



Technical highlight: The patented liteCarve® free-form reflector creates a rectangular cone of light from a round half disc. Homogeneous and perfectly glare-free.



WALLWASHER



RECESSED WALLWASHER

Function	pivots up to 2x25° in the channel pivots up to 2x90° on the track	
Dimensions	398 x 35 x 76 mm ideal distance between the luminaires 0.8 - 1m, for the vertical surface > 40% of the installation height	335 x 50 x 47 mm ideal distance between the luminaires 0.8 - 1m, for the vertical surface > 40% of the installation height
Mounting	3-phase track with/without channel. surface-mounted, pendant, recessed	recessed with frame
System capacity	6 x 4 W LED	9 x 4 W LED
Colour temperature	3000 K, 4000 K; SDCM2	3000 K, 4000 K; SDCM2
Colour rendering	Ra > 90	Ra > 90
Luminaire luminous flux	from 900 to 1000 lm	from 1300 to 1500 lm
Lighting angle	asymmetrical	asymmetrical
Base reflector colour	white, black	white, black
Control	DALI dimmable, basicDIM Wireless	DALI dimmable, basicDIM Wireless

SUPERSYSTEM integral linear
3-phase track | surface-mounted

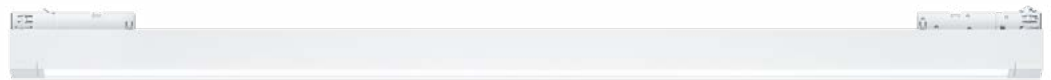


LIGHT LINE



HOMOGENEOUS LIGHT FOR HORIZONTAL SURFACES FROM FLEXIBLE, NARROW LINES

The biggest advantage of a lighting solution on tracks is its flexibility. However, providing multi-functional spaces such as lobbies, co-working spaces or shops with homogeneous, horizontal light does not require wide luminaires. What is required is wide, symmetrical light distribution. SUPERSYSTEM integral linear provides this via a high-quality, aluminium-sputtered polycarbonate primary reflector unit. Multi-layered MPO+ technology helps keep the light perfectly glare-free. The UGR value < 19 meets the requirements of EN 12464-2011 for the lighting of indoor workplaces.



LIGHT LINE

Optics	micro-pyramidal optics opal optics
Dimensions	837 x 35 x 76 mm 1085 x 35 x 76 mm 1333 x 35 x 76 mm
Mounting	3-phase track with/without channel surface-mounted, pendant, recessed
System capacity	14 W 21 W 27 W LED
Colour temperature	3000 K, 4000 K; SDCM2
Colour rendering	Ra > 90
Luminaire luminous flux	1300 lm 1800 lm 2300 lm
Lighting angle	symmetrical, 62°
Glare limitation	UGR < 19
Control	dimmable DALI

TOOL-FREE INSTALLATION ON THE TRACK

A precise double locking mechanism on both ends of the light line secures the luminaire – even when mounted horizontally or vertically on the wall.



CEILING- AND WALL-MOUNTED LUMINAIRES

SQUARE FLEXIBILITY

Horizontal and vertical lighting in the smallest of spaces: the square luminaire with an edge length of 110 mm can be flexibly equipped with various 3-unit modules. Downlights with beam angles of 12°, 27° and 49° as well as wallwashers take on individual lighting tasks. Even in narrow corridors, horizontal surfaces can be illuminated and the walls attractively highlighted at the same time. Complemented by various colour constellations of reflectors and luminaires, the result is an attractive modular system for a uniquely compact lighting tool. For ceiling or wall, surface-mounted or recessed.



SURFACE-MOUNTED

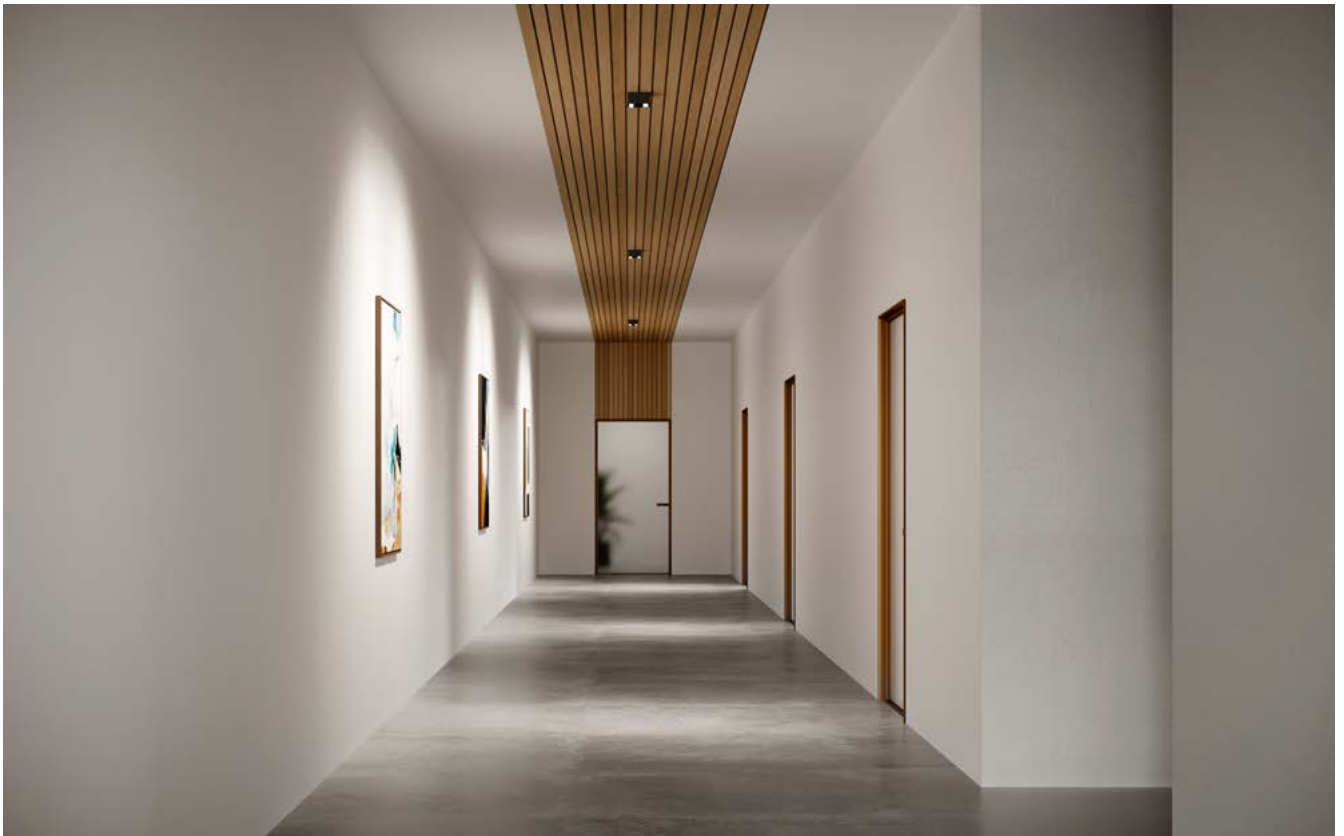


RECESSED



WALL-MOUNTED

	SURFACE-MOUNTED	RECESSED	WALL-MOUNTED
Function	downlight, single or double-sided wallwasher	downlight, wallwasher	surface-mounted wall luminaire (direct/indirect), single- or double-sided surface-mounted wall luminaire
Dimensions	120 x 120 x 65 mm (SF6) 120 x 120 x 69 mm (SF6 WW) 120 x 120 x 70 mm (SF6 IP44)	124 x 124 x 48 mm	120 x 121 x 55 mm
Mounting	surface-mounted	recessed with frame	wall-mounted
System capacity	6 x 3.1W LED	9 x 3.4W LED (3x wallwasher) 9 x 4W LED (3x downlight)	18.7W (direct/indirect) 10.7W (direct)
Colour temperature	2700K, 3000K, 4000K; SDCM2		
Colour rendering	Ra > 90		
Luminaire luminous flux	up to 1700lm	up to 1600lm (3x wallwasher) up to 3300lm (3x downlight)	up to 1700lm
Lighting angle	Symmetrical Spot 12°, Flood 27°, Very Wideflood 49° single or double-sided, asymmetric		
Glare limitation	UGR < 13	UGR < 13	UGR < 25
Base reflector colour	white, black, copper, aluminium-sputtered		
Housing colour	white, high-gloss white, black, high-gloss black, concrete grey	white, black	white, high-gloss white, black, high-gloss black, concrete grey
Protection class	IP20, IP44 with glass	IP20	IP20
Control	switchable, DALI dimmable, basicDIM Wireless		



Wallwasher/Spot

Wallwasher/Wallwasher





Spot/Spot

Surface-mounted wall luminaire
(direct/indirect)





SUPERSYSTEM inline with integrated sensor



Recessed Haufe baffle ceiling



Surface-mounted luminaire



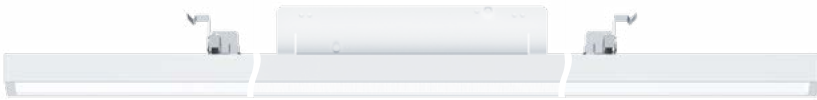
Pendant luminaire

SUPERSYSTEM INLINE

SLIMLINE INDIVIDUAL LUMINAIRES FOR THE LIGHTING OF HORIZONTAL SURFACES

Whether surface-mounted, suspended or integrated in baffle ceilings without using tools: uniform and glare-free light with a UGR value < 19 and 2000 lumen per running metre make SUPERSYSTEM inline an EN 12464-2011-compliant light line for

workplaces. Three different lengths and the option of combining linear luminaires with recessed downlights for brilliant accents offer creative freedom. The luminaires are ideal for baffle ceilings and come with springs for Haufe ceiling systems as standard.

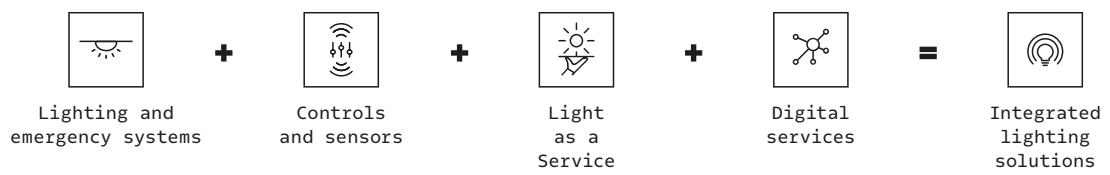


INLINE LIGHT LINE

INLINE RECESSED DOWNLIGHT

Optics	micro-pyramidal optics, optional opal optics	6 miniaturised individual light heads
Dimensions	1018x38x25mm (mounting 75mm incl. driver housing) 1266x38x25mm (mounting 75mm incl. driver housing) 1514x38x25mm (mounting 75mm incl. driver housing)	218x38x101mm (incl. driver housing)
Mounting	recessed, surface-mounted, pendant; special springs for Haufe ceiling systems as standard	recessed; special springs for Haufe ceiling systems
System capacity	21W 26W 32W LED	25W LED
Colour temperature	3000K, 4000K; SDCM2	3000K, 4000K; SDCM2
Colour rendering	Ra > 90	Ra > 90
Luminaire luminous flux	2000lm 2500lm 3000lm	1800lm
Lighting angle	symmetrical 62°	symmetrical Spot 12°, Flood 27°, Very Wideflood 49°
Glare limitation	UGR < 19	UGR < 13; viewing angle < 45°
Base reflector colour	-	white, black, copper, aluminium-coated
Control	dimmable DALI	switchable, dimmable DALI, basicDIM Wireless

T H E L I G H T



zumtobel.com/contact