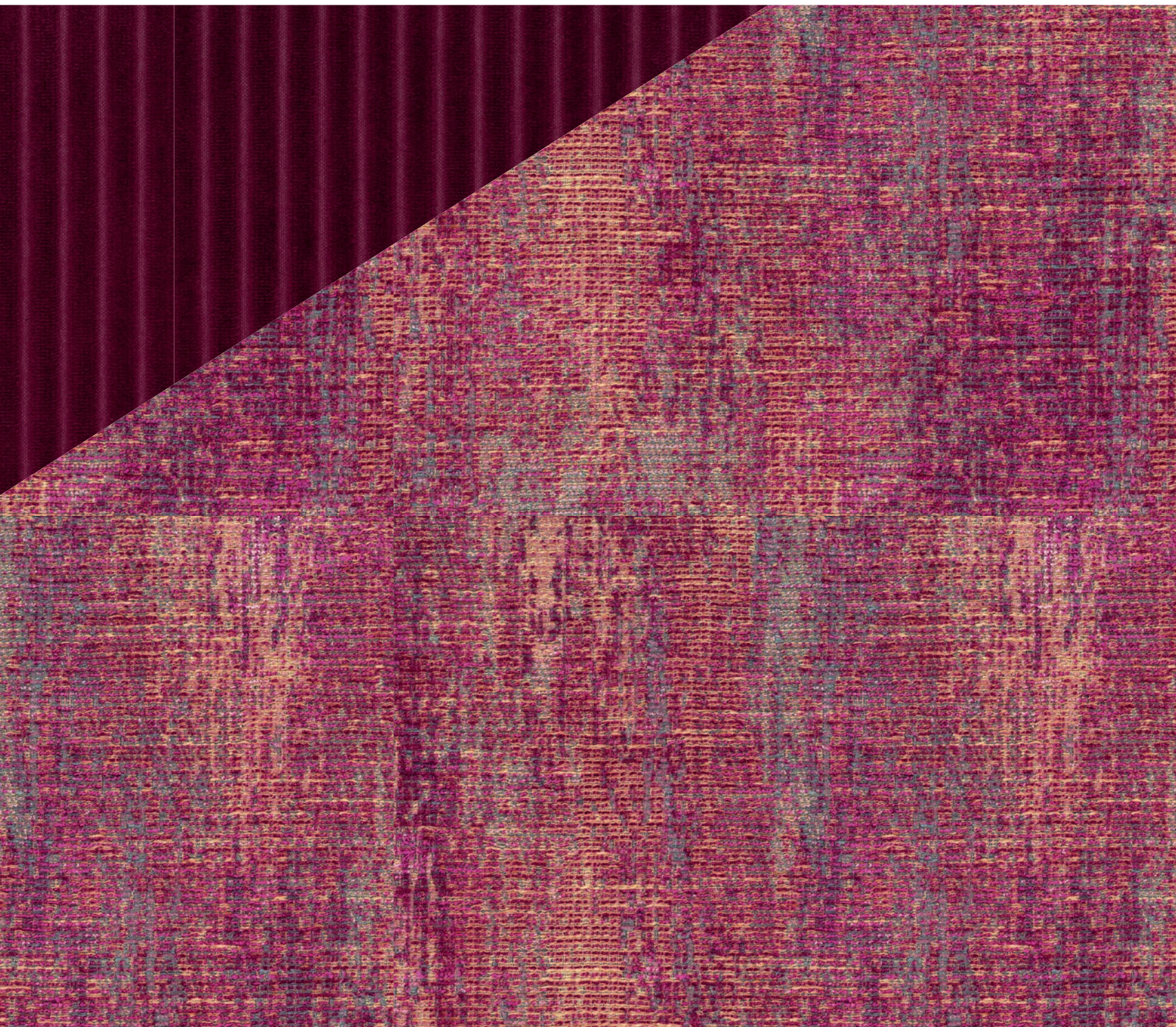


RUBELLI



FRAMMENTI VENEZIANI 2023

FRAMMENTI



VENEZIANI 2023

FRAMMENTI VENEZIANI

FRAMMENTI VENEZIANI

RUBELLI

RUBELLI 2023

Publisher

Rubelli S.p.A.

Photo Styling & Art Direction

Studio Salaris

Photographers

pag. 08-67 Matteo Imbriani; styling Studio Salaris

pag 70-85 Beppe Brancato; styling Set Design Studio

Text

Mariagiovanna Cosentino

Concept and Graphic Design

studio FM milano

Printing

Grafiche Antiga 2023

Thanks to

Alberto Levi Gallery

Amini

Arflex

Draga&Aurel

Kanz Architetti

La Cividina

Lam Ceramica

Liu Jo Living

Living Divani

Magis

Medulum

Miniforms

Portego

Potocco

Purple Props

Quinti Sedute

Rubelli Casa

Saba

Venini

Vero

Vetreria LP Glass

Zilio Aldo & C.

Special thanks to

Ca' di Dio Hotel, Venice

CONTENTS

004 **Intro**

008 **Architextiles**

036 **Caressing Velvets**

050 **A Peaceful Retreat**

066 *Damasco Today*

078 *Second Firing*

085 **Abacus**

Fram— menti Vene— ziani

The 2023 Rubelli collection proposes a Venetian journey. A journey made up of various stages and encounters with different materials that are Venice's hallmark. Often only fragments, precious and meaningful.

The fragment, even in its incompleteness and fragility, becomes a key element for developing and reconstructing a 'new' whole with a distinct personality. Fragments of textile creations from other epochs, stored and preserved in archives, can turn out to be valuable elements for composing new designs. But also fragments from the world of worked glass and gold, and from the world of stone and stucco.

Simple fragments become the source of inspiration for new creations, made up of new warps and new wefts. The fabric appropriates effects typical of other materials - the reflections of glass, the lustre of metals, the consistency of materials used in architecture.

The fragment theme then returns in the new textures that reference images, often fragmentary, of distant planets whose names they bear. A journey to new worlds, in an exploration - also of textiles - synonymous with innovation.

Looking towards distant worlds, on Earth, is what the Venetian traveller Marco Polo did in 1271 when he reached China via the Silk Road. But that's another story...

La collezione Rubelli 2023 propone un viaggio veneziano. Un viaggio fatto di varie tappe e di incontri con diversi materiali che sono la cifra di Venezia. Spesso solo frammenti, preziosi e significativi.

Il frammento, pur nella sua incompiutezza e fragilità, diventa un elemento essenziale per sviluppare e ricostruire un "nuovo" tutto dalla spiccata personalità. Frammenti di creazioni tessili di altre epoche, custoditi e conservati in archivio, possono rivelarsi elementi preziosi per comporre nuovi disegni.

Frammenti dal mondo del vetro lavorato e dell'oro, e dal mondo della pietra e degli stucchi. Semplici frammenti divengono la fonte ispiratrice per nuove creazioni, fatte di nuovi orditi e nuove trame. Il tessuto si appropria di effetti tipici di altri materiali: i riflessi del vetro, la lucentezza dei metalli, la corposità dei materiali utilizzati in architettura.

Il tema del frammento ritorna poi nelle nuove texture che richiamano immagini, spesso frammentarie, di pianeti lontanissimi di cui portano il nome. Un viaggio verso mondi nuovi, in una esplorazione - anche tessile - che è sinonimo di innovazione.

Guardare a mondi lontani - ma sulla Terra - è quello che fece nel 1271 il viaggiatore veneziano Marco Polo che attraverso la Via della Seta giunse in Cina. Ma questa è un'altra storia...

What a privilege it is to live in Venice, where art finds its natural place and where past and present coexist in harmony, complementing each other. 2022 saw the works of Anselm Kiefer at the Palazzo Ducale, Anish Kapoor at the Accademia, George Baselitz at Palazzo Grimani - three outstanding artists perfectly integrated in the historical places that hosted their exhibitions. Those same places also house Rubelli fabrics, as Rubelli and Venice are the same in nature: both at ease with the ancient and the modern and with the most diverse cultures. From this happy harmony comes our story for 2023.

Venice is a boundless source of inspiration. Living there and experiencing it every day allows you to catch those 'fragments' that elude the distracted visitor. You'll find many of these fragments in the new collection: precious gilding, soft velvet, the reflections of glass, the colours of the great Venetian masters, the movement of water, the patina of time, harmonic contrasts...

We want to share these precious fragments with you so that you too can enjoy the enchanting beauty of Venice through our fabrics and wallcoverings.

Venice is infectious beauty, captivating with its charm. Peter Marino and Luke Edward Hall have also fallen prey to it. Both have interpreted fragments of Venice in original and opposing ways, demonstrating once again, as if it were even necessary, how Venice is not just a physical place but an inspiring muse without time or boundaries.

I want to thank all of you who appreciate Rubelli's creations and value what we produce.

And I would also like to thank here the many collaborators who with talent and enthusiasm, through their daily work, produce the Rubelli collections, bringing our Venetian fragments to each one of you.

Quale privilegio vivere a Venezia, dove l'arte è di casa e dove passato e presente convivono in armonia, integrandosi l'uno con l'altro. Il 2022 ha visto le opere di Anselm Kiefer a Palazzo Ducale, di Anish Kapoor all'Accademia, di George Baselitz a Palazzo Grimani: tre artisti eccezionali perfettamente inseriti nei luoghi storici nei quali erano ospitati. Quegli stessi luoghi ospitano anche tessuti Rubelli, perché la natura di Rubelli è la stessa di Venezia: entrambe a proprio agio sia con l'antico che con il moderno e con le più diverse culture. Da questa felice armonia nasce il nostro racconto per il 2023.

Venezia è fonte inesauribile di ispirazione. Viverci e viverla ogni giorno consente di cogliere quei "frammenti" che sfuggono al visitatore distratto. Nella nuova collezione troverete molti di questi frammenti: dorature preziose, morbidi velluti, i riflessi del vetro, le cromie dei grandi pittori veneziani, il movimento dell'acqua, la patina del tempo, i contrasti armonici...

Vogliamo condividere con voi questi preziosi frammenti affinché anche voi possiate godere della incantevole bellezza di Venezia attraverso i nostri tessuti e rivestimenti murali.

Venezia è bellezza contagiosa che conquista col suo fascino. Anche Peter Marino e Luke Edward Hall ne sono rimasti vittime. Entrambi hanno interpretato in maniera originale ed opposta frammenti di Venezia, dimostrando ancora una volta - se mai ce ne fosse bisogno - quanto Venezia sia non soltanto un luogo fisico, ma musa ispiratrice senza tempo e senza confini.

Voglio ringraziare tutti voi che apprezzate le creazioni Rubelli e date valore a quanto noi produciamo.

E qui voglio ringraziare anche i molti collaboratori che con talento ed entusiasmo, attraverso il loro lavoro quotidiano, realizzano l'opera di Rubelli, permettendo di far arrivare a ciascuno di voi i nostri frammenti veneziani.

Archi—

textiles

A contemporary Venetian space that conjures up 20th century architecture and design forms the backdrop for Rubelli's new textile collection.

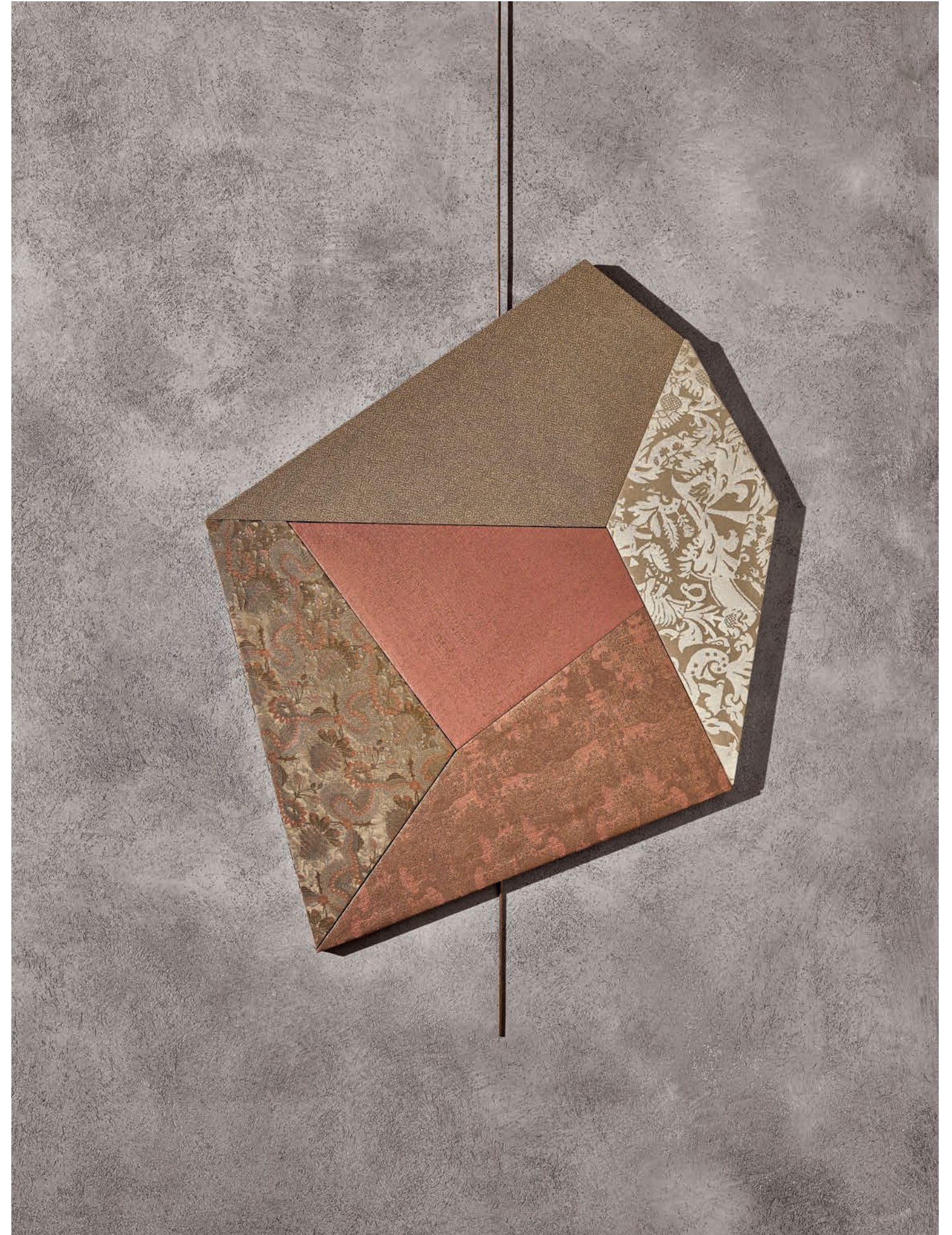
Rooms that are the expression of an architectural alphabet, made up of plays on surfaces, materials, colour and a dynamic light/shade duality, which brings together fabrics and architecture.

Various and diverse materials - stone, marble, stucco, wood, textiles - compete in a dialogue on equal terms with the lively and curious minds that created them and the skilful hands that designed them coming out on top.

Uno spazio contemporaneo veneziano che evoca architetture e design del Novecento fa da sfondo alla nuova collezione tessile di Rubelli.

Stanze che sono espressione di un alfabeto architettonico - fatto di giochi di superfici, di materia, di colore e di una dinamica dualità luce/ombra - che accomuna tessuti e architetture.

Materiali vari e diversi - pietre, marmi, stucchi, legno, tessuti - si misurano in un dialogo alla pari: a uscirne vincitori le menti vivaci e curiose che li hanno creati e le mani abili che li hanno disegnati.





Gio Arm Chairs by Rubelli Casa **Moon Promenade 30617-2, Neptune 30618-2**



Hill Chair by Quinti Moon Promenade 30617-6; Sheer Improvisation 30627-3
 On the right: Pouf Secret Venus 30605-6; Queen 30603-6; King 30606-10



Curtain **Charme 30604-14**
Velour Armchair by Rubelli Casa **Jupiter 30616-1**, Cushion **Scott 30619-3**





Waves Chair by La Cividina **Queen 30603-6**; Curtain **Sandy 30628-2**
On the left: Wallcovering **Flax Wall 23046-10**; Screen **Veniceland 30608-1**;
Bedsread **Glassweave 30607-12**, Cushion **Glassweave 30607-13**



Wallcovering **Eliodoro Wall 23050-2**
 Sinua Coffee Table small by Rubelli Casa **Saturno 30615-10**



On the right: Wallcovering **Charme Wall 23048-5**
 Hill Chair by Quinti **Moon Promenade 30617-6**, Cushion **Silkglass 30600-4**



Elodie Chair by Potocco **Petite Chérie 30601-2**;
Cushion **Glassweave 30607-14**



Wallcovering **Flax Wall 23046-10**

On the left: Sinua Coffee Table large **Glassweave 30607-18**
and Sinua Coffee Table small by Rubelli Casa **Saturno 30615-10**



Glassweave 30607-10, Sax 30624-1

On the right: Curtain Charleston 30622-2, Bubble Pouf by Quinti Glassweave 30607-10-8



Curtain **Silkglass 30600-4**
On the left: Curtain **Silkglass 30600-4**
Gradisca Low Armchair by Liu Jo **Secret Venus 30605-5**





Wallcovering **Silkglass Wall 23049-3**, Sinua Consolle by Rubelli Casa **King 30606-6**





Chair **Silkglass 30600-7**
On the left: Curtain **Grand Amour 30602-1**

Caressing

Velvets

Velvet is a caress, given and received.

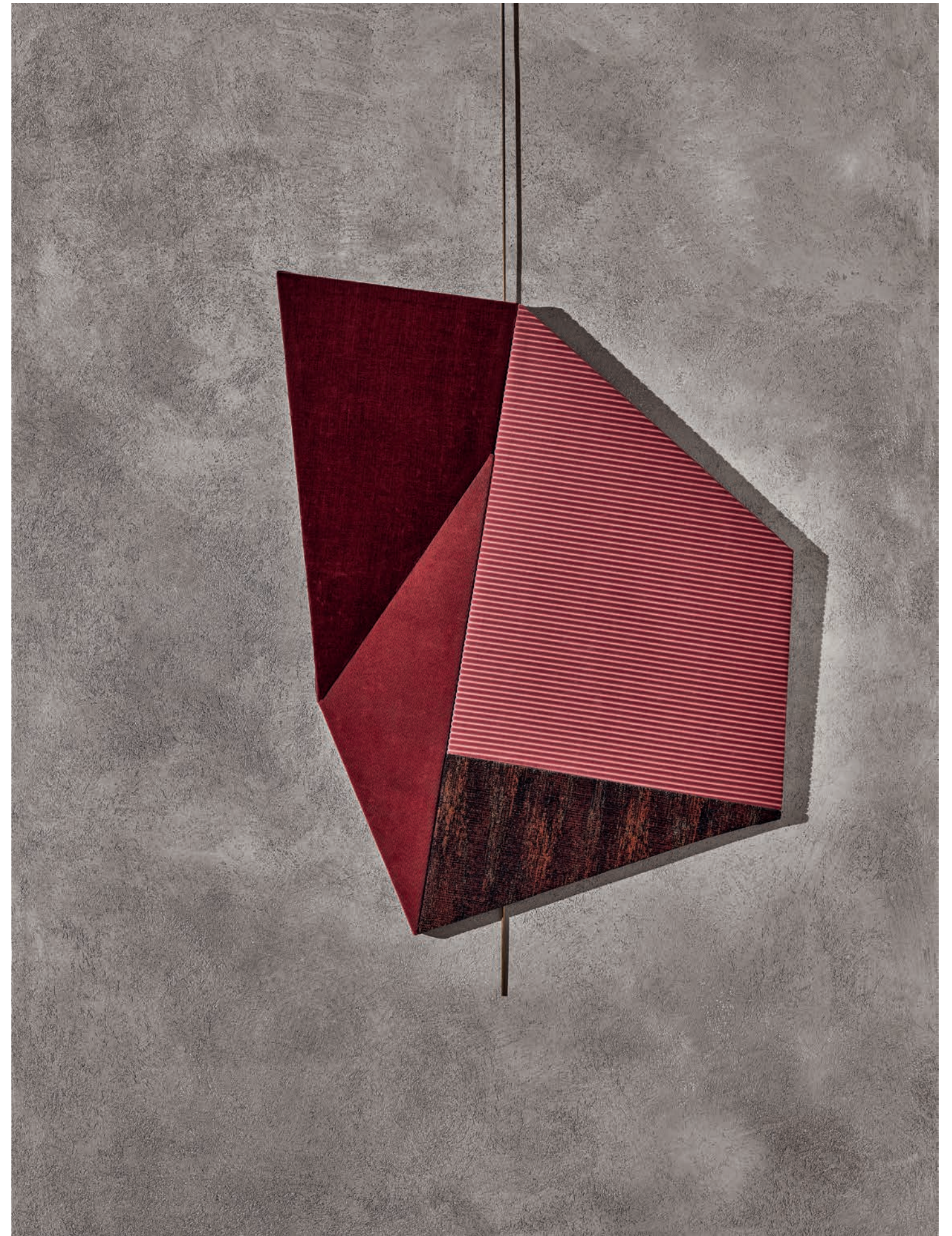
Velvet is softness, elegance, refinement, regalness, opulence, richness, pleasure, colour. Velvet belongs to Venetian history and tradition. It belongs to Rubelli, which keeps precious antique velvet in its historical archives and has always introduced new types, from the handmade velvet of the early years to artistic velvet and the plain, printed, striped, iridescent, technical velvet with very high performances.

It's true, velvet can still amaze today.

Il velluto è una carezza: che si fa e che si riceve.

Il velluto è morbidezza, eleganza, raffinatezza, regalità, opulenza, ricchezza, piacere, colore. Il velluto appartiene alla storia e alla tradizione veneziana. Appartiene a Rubelli, che nell'archivio storico custodisce preziosi velluti antichi e che da sempre ne propone sempre nuovi: dai velluti a mano degli albori ai velluti artistici fino ad arrivare ai velluti uniti, stampati, rigati, cangianti, tecnici ad altissime prestazioni.

Sì, oggi il velluto può stupire ancora.





Curtain **Sally 30609-3**; Yak Sofa by Rubelli Casa **Dandy 30613-10**;
On the left: Curtain **Secret Venus 30605-2**; Yak Sofa by Rubelli Casa **Dandy 30613-10**;
Cushion **Scott 30619-13**; Pouf **Tierra 30614-4**



Pouf **King 30606-8**;
Gala Sofa by Saba Backrest **Seltz 30611-18**;
Seat **Seltz 30611-16**; Cushion **Seltz 30611-15**



Gala Sofa by Saba Backrest **Seltz 30611-18**;
Seat **Seltz 30611-16**; Cushion **Seltz 30611-15**



Velour Tub Chairs by Rubelli Casa **Shadow 30612-19-21-20**



Brut Chair by Magis Seat **Tierra 30614-1**; Backrest **Dandy 30613-8**
 On the right: Curtain **Twilight 30625-4**; Brut Chair by Magis Seat **Tierra 30614-1**;
 Backrest **Dandy 30613-8**





Curtains **Charleston 30622-1-2-3**
Pouf Arkad small by Zilio Aldo **Dandy 30613-6-7**, **Seltz 30611-6**, **Shadow 30612-5**

A Peaceful Retreat

Being a guest at Ca' di Dio is like feeling at home. In olden times Ca' di Dio was a refuge for pilgrims, today it is an elegant Venetian sanctuary that captures the spirit of the city and blends its history with modernity, ideal for guests who want something more than just a multi-star hotel.

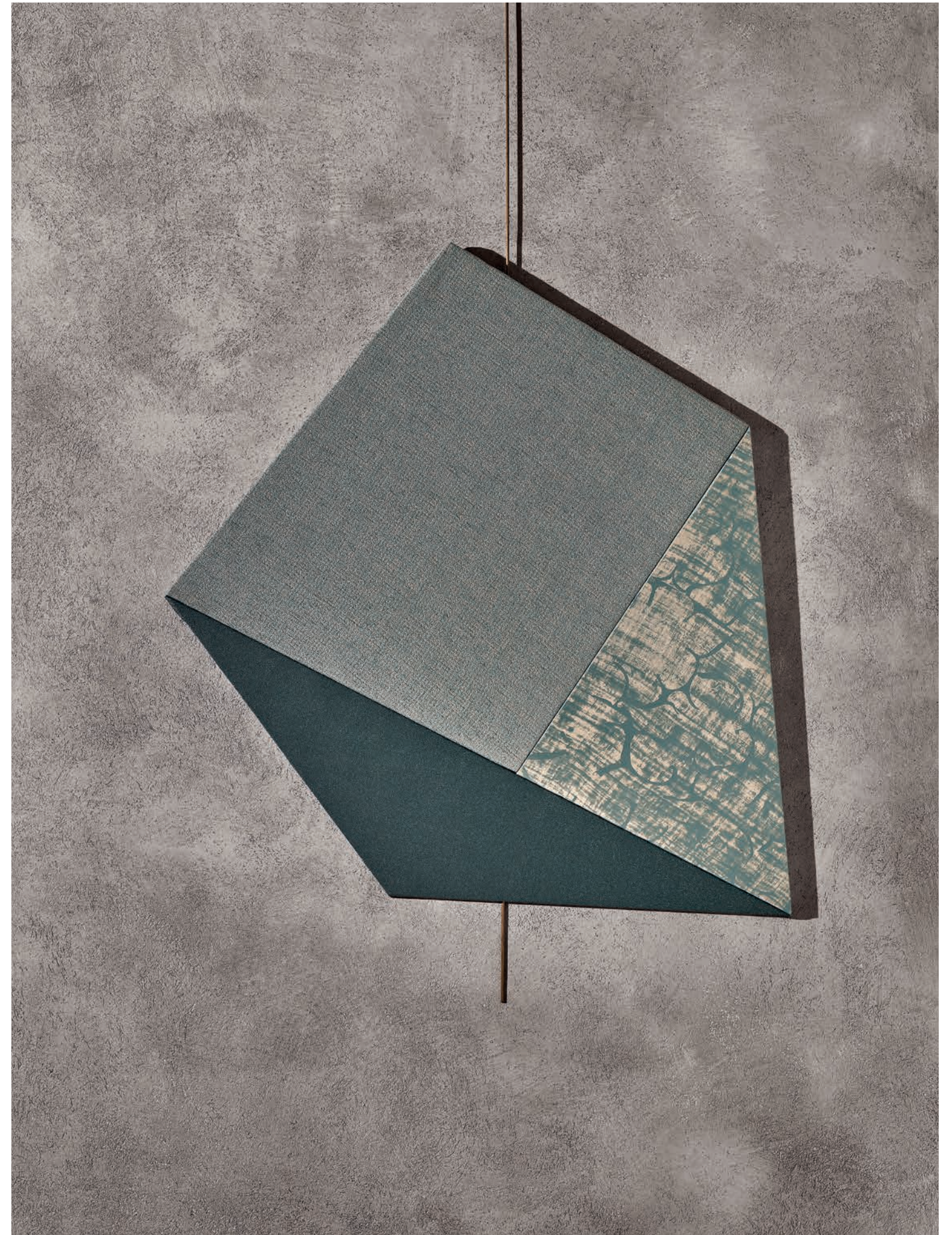
Cross the hotel threshold and leave Venice behind to find it again in all its beauty from every window, carrying the city inside you in a landscape that becomes a landscape of the soul with eyes closed.

Every decorative, architectural or lighting element is the fruit of the skilled hands of local craftsmen who combine their passion for their work with the secrets and techniques of the Venetian tradition. Ca' di Dio, an experience that goes beyond hospitality.

Essere ospiti a Ca' di Dio è come sentirsi a casa. In tempi lontani Ca' di Dio è stato rifugio per i pellegrini, oggi è un elegante rifugio veneziano che cattura lo spirito della città e fonde la sua storia con la modernità, ideale per ospiti che vogliono qualcosa di più di un hotel pluristellato.

Varcare la soglia dell'hotel, lasciarsi Venezia alle spalle per ritrovarla in tutta la sua bellezza da ogni finestra: portare la città dentro di sé in un paesaggio che ad occhi chiusi diventa paesaggio dell'anima.

Ogni elemento decorativo, architettonico o di illuminazione è frutto delle sapienti mani di abili artigiani locali che uniscono alla passione per il proprio lavoro i segreti e le tecniche della tradizione veneta. Ca' di Dio: un'esperienza che va oltre l'ospitalità.





Chair Zeldà 30620-16, Cushion Citymap 30621-4



Pasticca Sofa by Living Divani **Citymap 30621-19**; **Zelda 30620-34-32**; **Citymap 30621-19**; **Charme 30604-13**; **Zelda 30620-33**
 Cushions **Zelda 30620-34**; **Citymap 30621-19**



Citymap 30621-19, Zelda 30620-34-32
 On the right: Charme 30604-13; Citymap 30621-19; Zelda 30620-32





From the top Cushions **Scott 30619-14**; **Zelda 30620-23**; **Scott 30619-13**;
Zelda 30620-24-25; Pouf **Tierra 30614-4**
On the left: Curtain **Streetlight 30626-14**
Guest Stool Chair by Liu Jo **Scott 30619-1**



Sheer **Improvisation 30627-3**



On the right: Sheers **Jam Session 30629-1**; Sofa **Scott 30619-9**;
Cushions **Citymap 30621-7-4**; Chair **Zelda 30620-16**



Headboard **Citymap 30621-7**
On the left: Headboard **Citymap 30621-7**; Bedspread **Charme 30604-2**;
Cushions **Zelda 30620-08-20**



Parterre Sofa by Quinti: Backrest **Citymap 30621-15**;
Seat **Citymap 3021-14**; Cushion **Citymap 30621-4**

Damasco Today

Second Firing

The second capsule collection by Peter Marino for Rubelli

Damasco Today



30555-1 Damasco Gypsum

Rubelli presents a new damask range in the light of a contemporary reworking of tradition. The antique damask, reinterpreted, is made new and ready for a new life.

While on the one hand this choice marks a historical continuity - Rubelli has always created and produced silk fabrics of this type - on the other hand it introduces an original interpretation of it.

Rubelli presenta una nuova famiglia di damaschi alla luce di una rielaborazione in chiave contemporanea che rivisita la tradizione. Il damasco antico, reinterpretato, si rinnova ed è pronto a vivere una nuova vita.

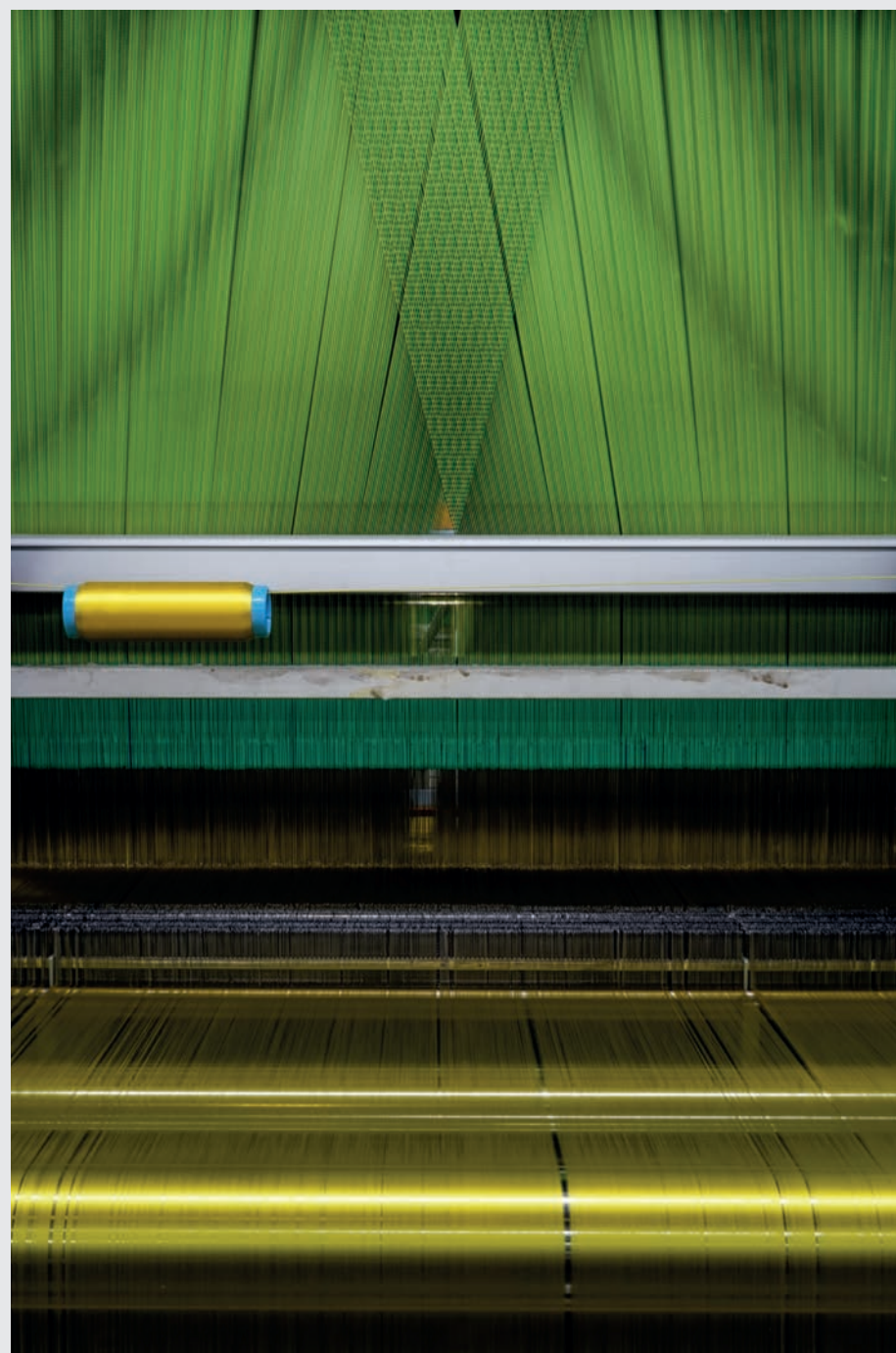
Se da un lato questa scelta segna una continuità storica - da sempre Rubelli crea e produce tessuti in seta di questa tipologia - dall'altro ne propone una lettura originale.

This new interpretation is the result of careful, disciplined work, centred in particular on weaves and colours.

The aim is to play down the designs handed down by tradition, also in the name. Each of the seven new damask fabrics is in fact named 'Damask' with a contrasting feature explaining the identity of the individual pattern: Patina, Pop, Flirt, Mirage, Gypsum, Puzzle, Decoupage.

La nuova lettura è il risultato di un lavoro attento e rigoroso, incentrato in particolare su intrecci e cromie.

Obiettivo: sdrammatizzare, anche nel nome, i disegni ereditati dalla tradizione. Ciascuno dei 7 nuovi damaschi è infatti denominato "Damasco" con un attributo a contrasto che descrive l'identità del singolo disegno: Patina, Pop, Flirt, Mirage, Gypsum, Puzzle, Decoupage.



This new interpretation is the result of careful, disciplined work, centred in particular on weaves and colours.





30556-6 Damasco Puzzle



30550-20 Cannelé

Cannelé owes its contemporary look to small irregularities that make it more informal.

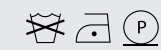
The new articles are based on documents stored in the Fondazione Rubelli archive (hence historical designs) and also 'glorious' damask from previous collections. Damask is Rubelli's style signifier. Thanks to the expert hands and talent of the designers in Rubelli's style department, the new damask – the offspring of antique damask and damask from past collections – is perceived as an artisanal creation.

Alla base dei nuovi articoli vi sono documenti conservati nell'archivio della Fondazione Rubelli (quindi disegni storici), ma anche damaschi "gloriosi" appartenuti a precedenti collezioni e che sono la cifra stilistica di Rubelli. Grazie alle mani esperte e al talento dei designer dell'ufficio stilismo di Rubelli, i nuovi damaschi – "figli" di damaschi antichi e damaschi di passate collezioni – vengono percepiti come creazioni artigianali.

30551 Damasco Patina

46%AC 35%LI 19%SE

Light use



Colours

Width

Horizontal Repeat

Vertical Repeat

6

140cm - 55"

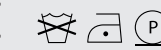
23cm - 9"

39cm - 15.5"

30552 Damasco Pop

40%AC 36%VI 24%SE

Light use



Colours

Width

Horizontal Repeat

Vertical Repeat

5

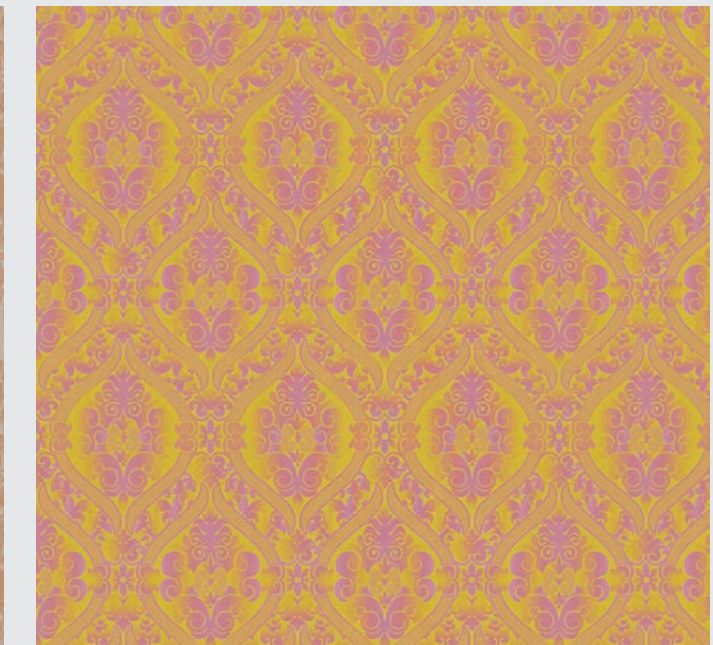
135cm - 53"

34cm - 13.5"

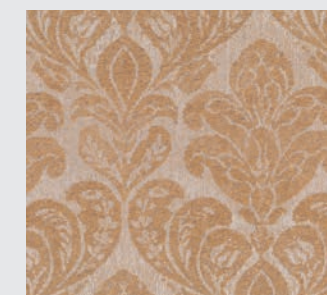
59cm - 23"



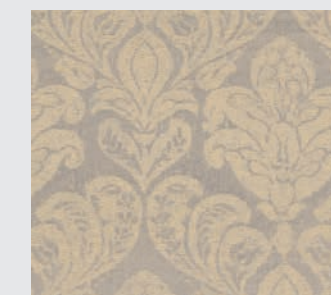
Half width repeat



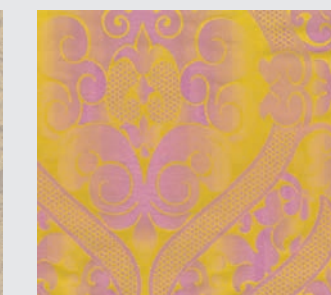
Full width repeat



30551 1 Bronzo



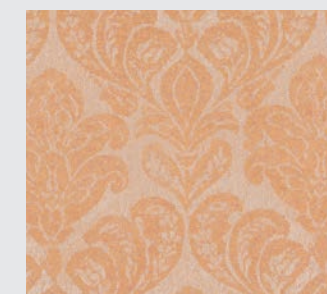
30551 2 Oro



30552 1 Giallo/rosa



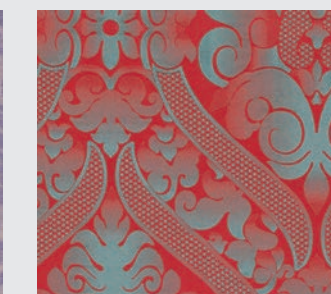
30552 2 Arancio/fuxia



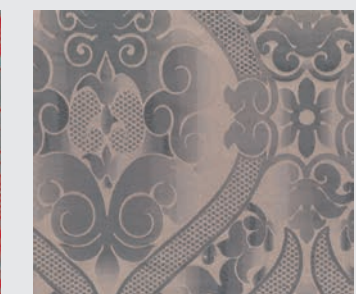
30551 3 Rame



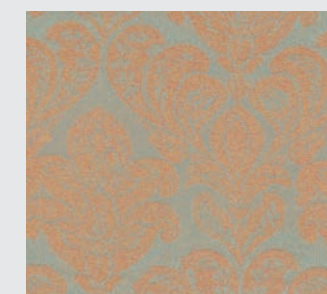
30551 4 Glicine



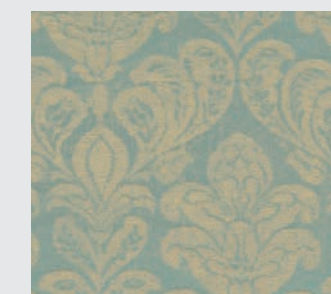
30552 3 Rosso/acqua



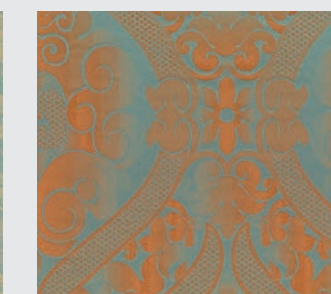
30552 4 Rosa/grigio



30551 5 Acquamarina



30551 6 Assenzio



30552 5 Acqua/rame

30553 Damasco Flirt

41%LI 38%CO 21%SE

Light use



Colours

5

Width

140cm - 55"

Horizontal Repeat

70cm - 27.5"

Vertical Repeat

60cm - 23.5"

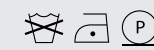


Full width repeat

30554 Damasco Mirage

30%AC 29%VI 23%LI 18%SE

Light use



Colours

6

Width

140cm - 55"

Horizontal Repeat

35cm - 14"

Vertical Repeat

39cm - 15.5"



Full width repeat

30555 Damasco Gypsum

48%CO 34%AC 18%SE

Light use



Colours

6

Width

140cm - 55"

Horizontal Repeat

35cm - 14"

Vertical Repeat

53cm - 21"

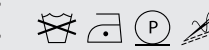


Full width repeat

30557 Damasco Decoupage

41%CO 24%AC 23%WO 12%SE

Light use



Colours

5

Width

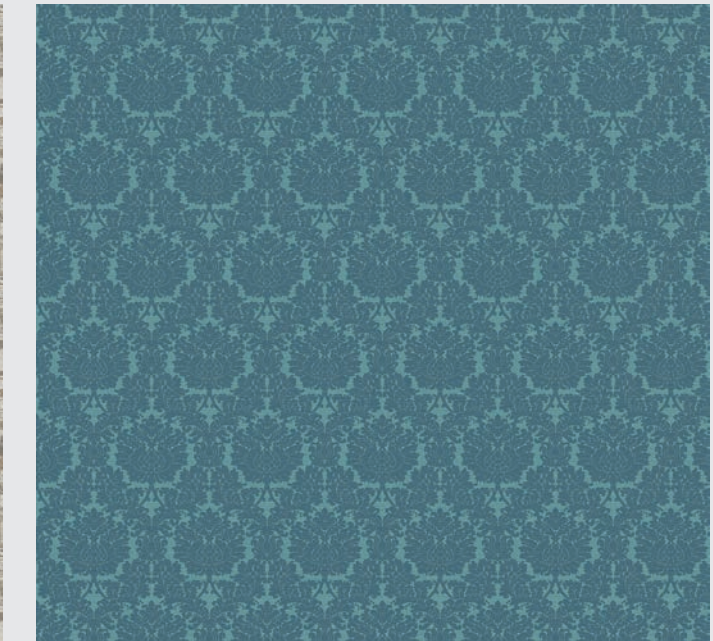
135cm - 53"

Horizontal Repeat

23cm - 9"

Vertical Repeat

35cm - 14"



Full width repeat



30553 1 Bianco/reversible



30553 2 Sabbia/reversible



30554 1 Sabbia



30554 2 Ciclamino



30555 1 Beige/reversible



30555 2 Ciclamino/reversible



30557 1 Grigio



30557 2 Sabbia



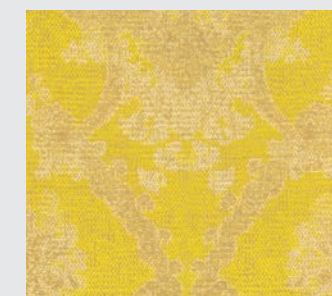
30553 3 Rosa Tea/reversible



30553 4 Acqua/reversible



30554 3 Arancio



30554 4 Giallo



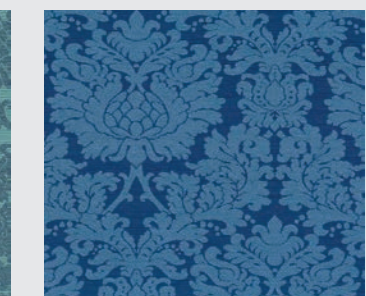
30555 3 Rame/reversible



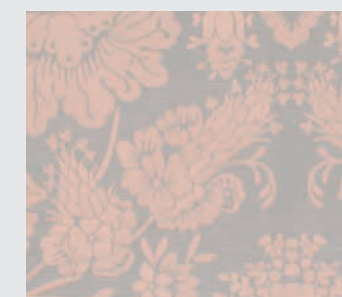
30555 4 Acqua/reversible



30557 3 Tiffany



30557 4 Blue



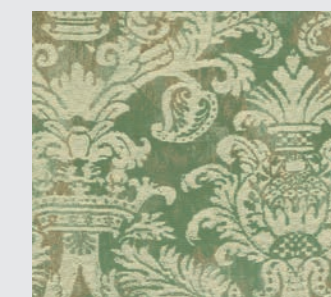
30553 5 Grigio/reversible



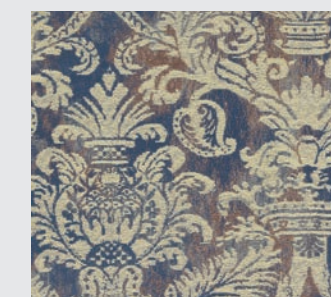
30554 5 Bluette



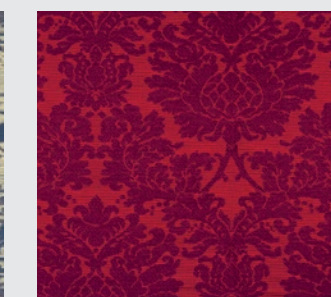
30554 6 Smeraldo



30555 5 Verde/reversible



30555 6 Bluette/reversible

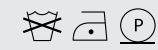


30557 5 Rosso

30556 Damasco Puzzle

79%CO 21%SE

Light use



Colours

7

Width

140cm - 55"

Horizontal Repeat

35cm - 14"

Vertical Repeat

61cm - 24"



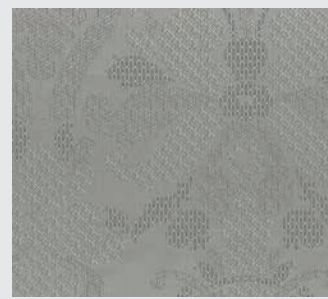
Full width repeat



30556 1 Calce



30556 2 Oro Pallido



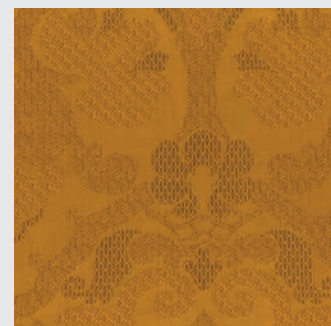
30556 3 Grigio



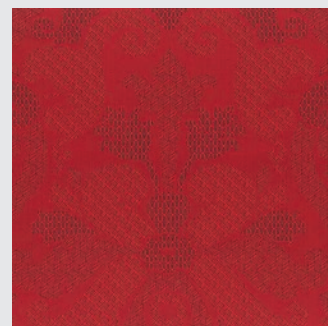
30556 4 Tortora



30556 5 Assenzio



30556 6 Arancio



30556 7 Rosso

30550 Cannelé

76%CO 17%SE 7%VI

Light use



Colours

20

Width

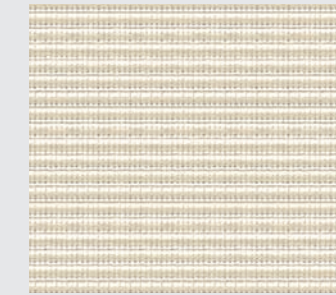
140cm - 55"

Horizontal Repeat

-

Vertical Repeat

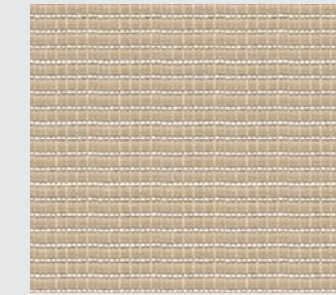
-



30550 1 Calce *



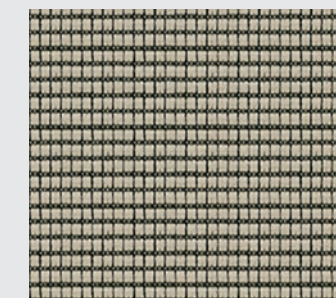
30550 2 Avorio *



30550 3 Sabbia *



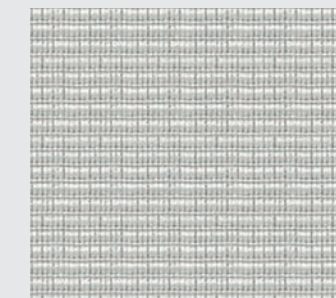
30550 4 Tortora *



30550 5 Pietra *



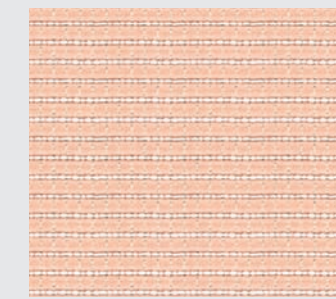
30550 6 Oro Pallido *



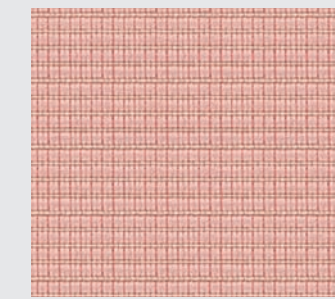
30550 7 Polvere *



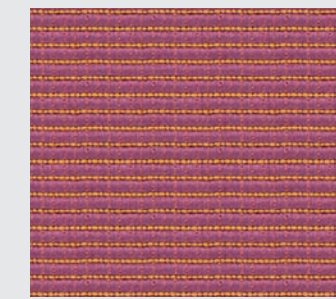
30550 8 Grigio *



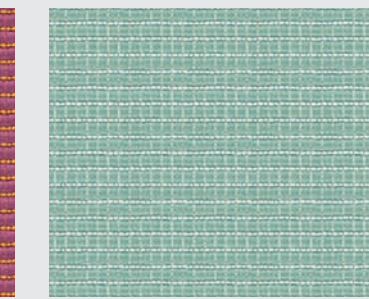
30550 9 Rosa Tea *



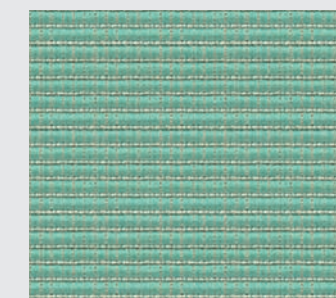
30550 10 Pesco *



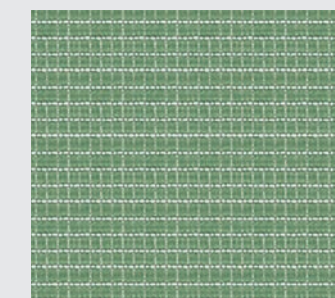
30550 11 Ciclamino *



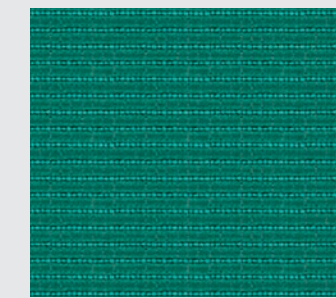
30550 12 Acquamarina *



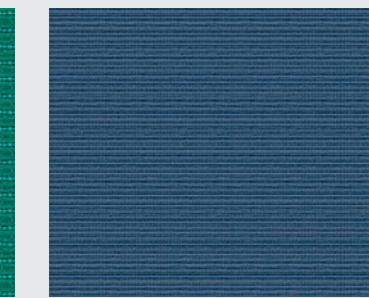
30550 13 Assenzio *



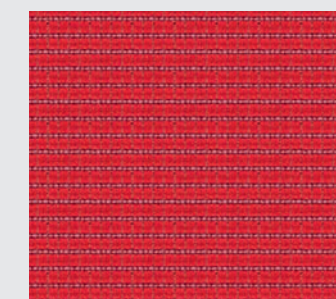
30550 14 Verde *



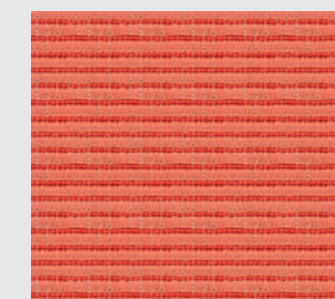
30550 15 Pavone *



30550 16 Blue *



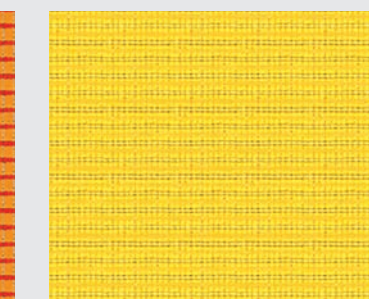
30550 17 Rosso *



30550 18 Corallo *



30550 19 Arancio *



30550 20 Giallo *

Second Firing

The second *capsule collection* by Peter Marino for Rubelli

Peter Marino's muse was his collection of ceramics by Pierre-Adrien Dalpayrat, a French artist/ceramist from the late 19th century.

Rubelli has assigned a second capsule collection to the multifaceted creativity of the well-known American architect Peter Marino. SECOND FIRING is a collection of ten fabrics whose name refers to the firing of ceramics in the kiln.

Peter Marino's muse was his collection of ceramics by Pierre-Adrien Dalpayrat, a French artist/ceramist from the late 19th century, known for his innovative glazes.

The multi-coloured vases created by Dalpayrat impress Peter Marino with the mix of colours in the glazes, but also with their modernity.

Rubelli ha affidato alla creatività poliedrica del noto architetto americano Peter Marino una seconda capsule collection. SECOND FIRING è una collezione di dieci tessuti che nel nome fa riferimento alla cottura nella fornace delle ceramiche.

Musa ispiratrice di Peter Marino è stata, infatti, la sua collezione di ceramiche di Pierre-Adrien Dalpayrat, artista/ceramista francese di fine Ottocento, noto per i suoi smalti innovativi.

I suoi vasi multicolore hanno colpito Peter Marino per il mix di colori degli smalti, ma anche per la loro modernità.





30520 Dalpayrat Glaze Second Firing 1



30526 Acqua Profonda Second Firing 7



30522 Riflessi Scuri Second Firing 3



30529 Dalpayrat Blue Second Firing 10

To highlight the shiny effect of the ceramic glazes, metallic weaves have also been added in some variants.

While the patterns and texture come from Dalpayrat ceramics, many of the colours are just the same as in the paintings of Paolo Veronese, a Venetian painter much loved by Peter Marino.

His attentive eye has identified the most interesting and daring colour combinations in the various paintings, guiding him in his colour choices.

In SECOND FIRING, Peter Marino has thus succeeded in achieving a remarkable alchemy, combining the "chromatic waterfalls" of a "modern" artist such as Dalpayrat with the colour contrasts of the works of a Renaissance painter. He created a capsule collection of fabrics that are unique of their kind. True works of art.

Se disegni e matericità nascono dalle ceramiche di Dalpayrat, molti colori sono anche gli stessi dei quadri di Paolo Veronese, pittore veneziano molto amato dall'architetto americano.

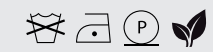
Il suo occhio attento ha individuato nei vari dipinti le combinazioni di colore più interessanti e audaci, guidandolo nelle scelte cromatiche.

In SECOND FIRING Peter Marino è quindi riuscito a compiere una singolare alchimia accostando le "cascate di cromie" di un artista "moderno" quale Dalpayrat ai contrasti cromatici delle opere di un pittore rinascimentale: ha creato tessuti unici nel loro genere. Vere e proprie opere d'arte.

30520 Second Firing 1

40%CO 26%PA-eco 25%VI 9%PM

Light use



Width

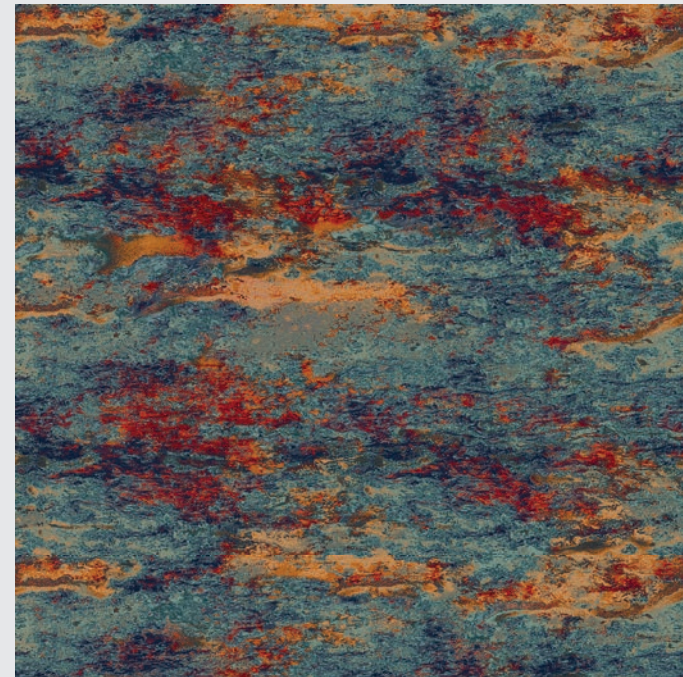
140cm - 55"

Horizontal Repeat

70cm - 27.5"

Vertical Repeat

93cm - 36.5"



30520 1 Dalpayrat Glaze

Full width repeat

30521 Second Firing 2

40%CO 26%PA-eco 25%VI 9%PM

Light use



Width

140cm - 55"

Horizontal Repeat

70cm - 27.5"

Vertical Repeat

93cm - 36.5"



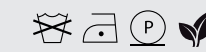
30521 2 Riflessi di Luce

Full width repeat

30524 Second Firing 5

79%CO 21%PA-eco

Light use



Width

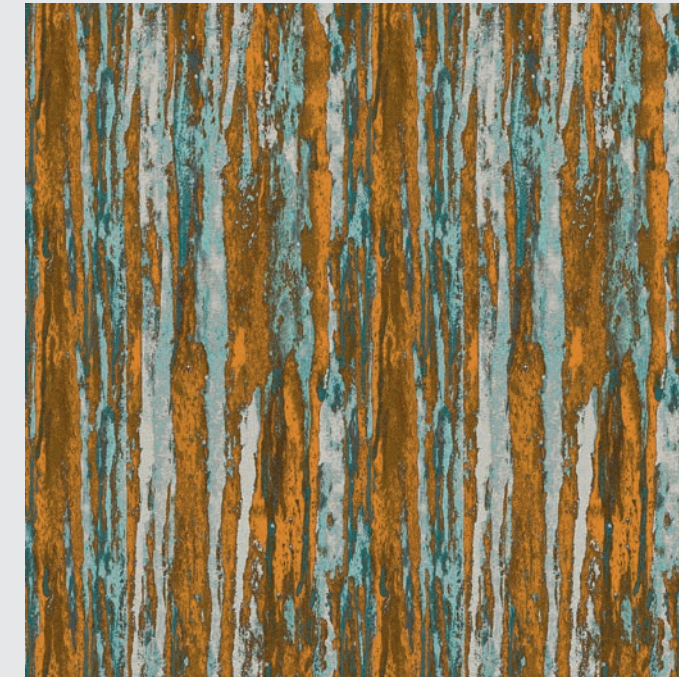
140cm - 55"

Horizontal Repeat

70cm - 27.5"

Vertical Repeat

127cm - 50"



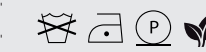
30524 5 Blue Tiger

Full width repeat

30525 Second Firing 6

77%CO 23%PA-eco

Light use



Width

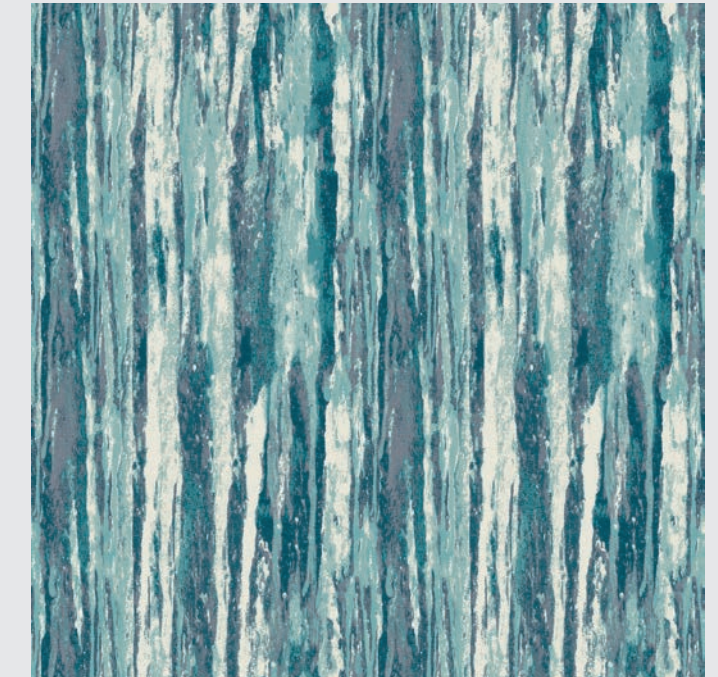
140cm - 55"

Horizontal Repeat

70cm - 27.5"

Vertical Repeat

125cm - 49"



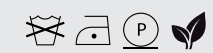
30525 6 Acqua Luminosa

Full width repeat

30522 Second Firing 3

40%CO 26%PA-eco 25%VI 9%PM

Light use



Width

140cm - 55"

Horizontal Repeat

70cm - 27.5"

Vertical Repeat

94cm - 37"



30522 3 Riflessi Scuri

Full width repeat

30523 Second Firing 4

59%CO 27%PA-eco 10%VI 4%PM

Light use



Width

140cm - 55"

Horizontal Repeat

70cm - 27.5"

Vertical Repeat

69cm - 27"



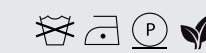
30523 4 Apoteosi di Venezia

Full width repeat

30526 Second Firing 7

79%CO 21%PA-eco

Light use



Width

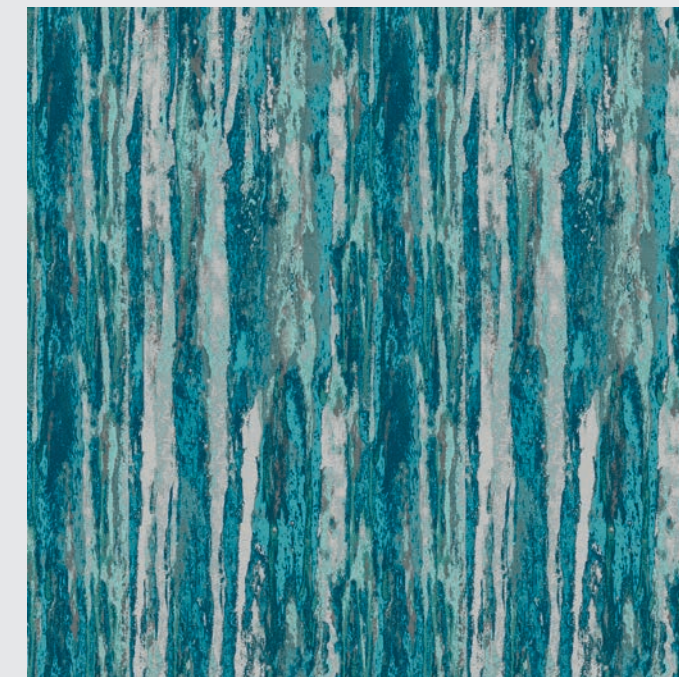
140cm - 55"

Horizontal Repeat

70cm - 27.5"

Vertical Repeat

129cm - 51"



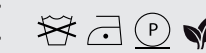
30526 7 Acqua Profonda

Full width repeat

30527 Second Firing 8

73%CO 21%PA-eco 5%VI 1%PM

Light use



Width

140cm - 55"

Horizontal Repeat

70cm - 27.5"

Vertical Repeat

125cm - 49"



30527 8 Green Tiger

Full width repeat

30528 Second Firing 9

55%CO 27%PA-eco 13%VI 5%PM



Width 140cm - 55"
Horizontal Repeat 70cm - 27.5"
Vertical Repeat 54cm - 21.5"



30528 9 Dalpayrat Green

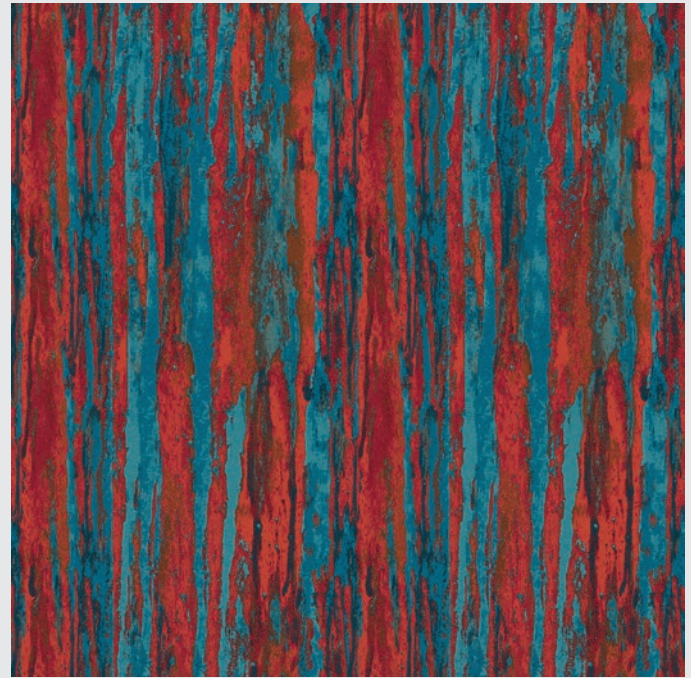
Full width repeat

30529 Second Firing 10

72%CO 21%PA-eco 5%VI 2%PM



Width 140cm - 55"
Horizontal Repeat 70cm - 27.5"
Vertical Repeat 125cm - 49"



30529 10 Dalpayrat Blue

Full width repeat

ABACUS

086 PATTERNS
& DECORATIONS

093 TEXTURES
& VELVETS

107 SHEERS
& DRAPERY

112 WALLPAPERS

30600 Silkglass

Silk Glass is a composition of damask 'tesseræ' from different periods (17th and 18th centuries), housed in the historical archive. Joining up small fragments produces a new silky pattern, elegant and coloured like blown glass.

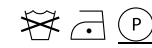
A "glassy" fabric that evokes the artistic glass creations of the Venetian architect and designer Carlo Scarpa.

Una composizione di "tessere" di damasco di diverse epoche (Seicento e Settecento) appartenenti all'archivio storico. Dall'unione di piccoli frammenti nasce un nuovo pattern serico, elegante, colorato come un vetro soffiato.

Un tessuto "vetroso" che richiama le creazioni artistiche in vetro dell'architetto e designer veneziano Carlo Scarpa.

51%CO 34%AC 15%CU

Light use



Colours 8

Width 140cm - 55"

Horizontal Repeat 70cm - 27.5"

Vertical Repeat 67cm - 26.5"



Half width repeat



30600 1 Avorio



30600 2 Sabbia



30600 3 Pietra



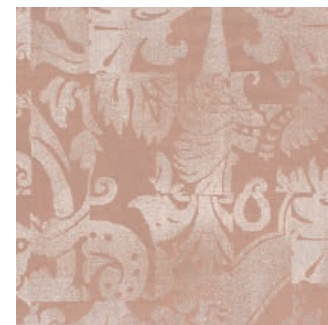
30600 4 Madreperla



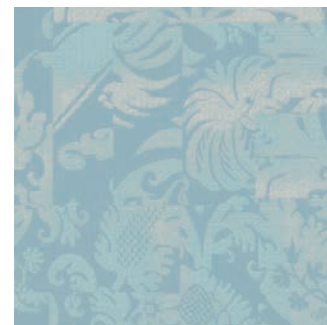
30600 5 Legno



30600 6 Dorata



30600 7 Pesco



30600 8 Acqua

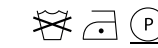
30601 Petite Chérie

A silk lampas with a graceful design. The Rubelli style department has reduced the scale of the original document, of Venetian origin, and kept in the historical archives, and recreated - as in a work of restoration - part of the lost document. The luminous effect comes from the shiny white weft which traces the lace with a typical Louis XV meander motif.

Un lampasso di seta dal disegno aggraziato. Del documento originale, di origine veneziana, custodito nell'archivio storico, l'ufficio stile ha ridotto la scala e ha ricreato - come in un'opera di restauro - parte del documento andato perduto. L'effetto luminoso è dato dalla trama lucida bianca che disegna il pizzo con motivo meandro tipico Luigi XV.

66%VI 14%SE 11%AC 9%LI

Light use



Colours 4

Width 140cm - 55"

Horizontal Repeat 17.5cm - 6.5"

Vertical Repeat 25cm - 10"



Quarter width repeat



30601 1 Avorio



30601 2 Sabbia



30601 3 Corallo



30601 4 Blu

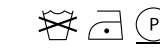
30602 Grand Amour

Silk jacquard, created from a small fragment in the archive textile collection. What makes it unique is an unprecedented reworking which brings us a magnified version of the original small floral motif that stands out on the elegant and elaborate satin ground. Available in only one version, in which the almost irreverent tones of shocking pink are softened by a subdued ivory.

Jacquard in seta. Nasce da un piccolo frammento della collezione tessile d'archivio. A renderlo unico una rielaborazione inedita che ci restituisce ingigantito il piccolo motivo floreale originale che spicca sull'elegante ed elaborato fondo in raso. Una sola variante di colore in cui i toni quasi irriverenti del fucsia vengono attenuati da un pacato avorio.

83%VI 17%SE

Light use



Colours 1

Width 135cm - 53"

Horizontal Repeat 67.5cm - 26.5"

Vertical Repeat 106cm - 41.5"



Full width repeat



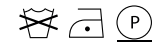
30602 1 Fragola

30603 Queen

A light lampas in relief, on a precious silk ground that comes from the working of a fragment of damask stored in the historical archives. The surface recreates the effect of the cuoridoro, typically Venetian leather decorative coverings. In Queen the gold - the absolute key feature - creates ever-new vibrant light effects and lends an ever-modern touch of glamour.

35%CO 34%VI 22%SE 9%PM

Light use



Un lampasso leggero in rilievo su un prezioso fondo seta che nasce dall'elaborazione di un frammento di damasco dell'archivio storico. La superficie ricrea l'effetto dei cuoridoro, rivestimenti decorativi in cuoio tipicamente veneziani. In Queen l'oro, assoluto protagonista, crea vibrazioni luminose sempre nuove e conferisce un tocco glamour sempre attuale.

Colours 6

Width 135cm - 53"

Horizontal Repeat 23cm - 9"

Vertical Repeat 45cm - 17.5"



Full Width Repeat



30603 1 Avorio



30603 2 Argilla



30603 3 Dorata



30603 4 Rosa



30603 5 Acqua



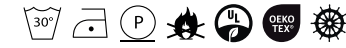
30603 6 Blu

30604 Charme

Damask with a silky appearance. Inspired by a patchwork of fragments of a Renaissance velvet in the Rubelli historical archives, it reproduces the effect of an abraded pattern thanks to a special weaving technique. It is suitable for light use.

100%PL Trevira CS

Light use



Colours 15

Width 140cm - 55"

Horizontal Repeat 70cm - 27.5"

Vertical Repeat 70cm - 27.5"

Damasco dall'aspetto serico. Ispirato ad un patchwork di frammenti di un velluto rinascimentale presenti nell'archivio storico Rubelli, riproduce l'effetto di un pattern abraso grazie ad una particolare tecnica di tessitura. È adatto per un uso leggero.

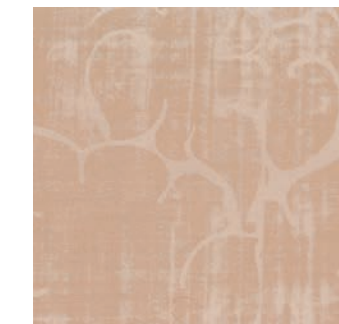


30604 1 Avorio

Half Width Repeat



30604 2 Alba



30604 3 Nude



30604 4 Madreperla



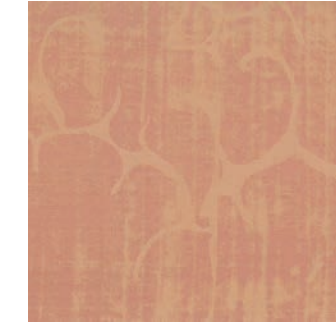
30604 5 Grigio



30604 6 Sabbia



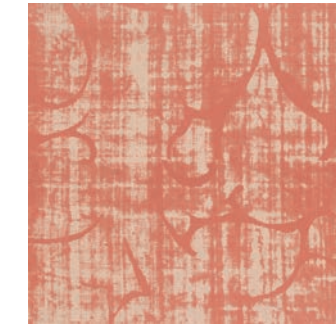
30604 7 Dorata



30604 8 Albicocca



30604 9 Rosa



30604 10 Corallo



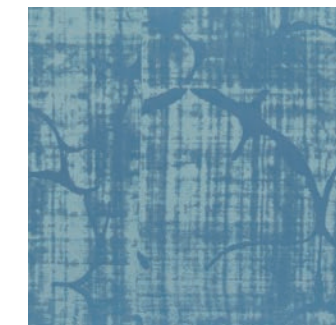
30604 11 Menta



30604 12 Salvia



30604 13 Acqua



30604 14 Ortensia



30604 15 Peltro

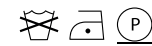
30605 Secret Venus

Silk lampas on satin ground, inspired by a 1930s Japanese silk kimono, kept in the Rubelli archives. The fabric retains the typical look of *shibori* work and presents a gallery of vases whose shapes are reminiscent of the 1930s artistic production of Venetian glassworks. A novel pattern, in 6 versions, all on a light ground.

Lampasso di seta su fondo raso. Si ispira ad un kimono giapponese in seta degli anni Trenta, custodito nell'archivio Rubelli. Il tessuto conserva l'aspetto tipico della lavorazione *shibori* e presenta una galleria di vasi che ricordano la produzione artistica degli Anni Trenta delle vetriere veneziane. Un disegno inedito, in 6 varianti, tutte su fondo chiaro.

41%CO 39%VI 20%SE

Light use



Colours

6

Width 140cm - 55"

Horizontal Repeat 35cm - 14"

Vertical Repeat 82cm - 32.5"



Half Width Repeat



30605 1 Sabbia



30605 2 Marrone



30605 3 Rosa



30605 4 Giallo



30605 5 Rosso



30605 6 Pavone

30608 Veniceland

An ironic approach, also in the name, for this print that comes from the inspired hand of the Mexican designer Gabriel Pacheco and that takes us on a sort of kaleidoscopic tour of Venice. Veniceland is a sort of stage midway between reality and dream. A print rich of elegant graphics and micro patterns that are at times unusual and curious. Available in a unique variation.

Un approccio ironico, anche nel nome, per uno stampato che ci conduce in una sorta di caleidoscopico tour di Venezia e che nasce dalla mano ispirata del disegnatore messicano Gabriel Pacheco. Veniceland è una sorta di palcoscenico a metà strada tra realtà e sogno. Uno stampato ricco di eleganti grafismi e di micro-disegni talvolta insoliti e curiosi. In un'unica variante.

100%CO

Heavy use



Colours

1

Width 145cm - 57"

Horizontal Repeat 70cm - 27.5"

Vertical Repeat 80cm - 31.5"



30608 1 Acqua

Full width repeat

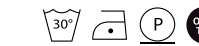
30609 Sally

Printed on cotton faille. A new floral print from a work by a contemporary artist: a painting of flower vases made for Rubelli by the English painter Sally Anne Fitter. The vases of roses are arranged in a particularly elegant pattern, in an alternation of solids and voids. Sally is an exuberant and joyful pattern.

Stampato su faille di cotone. Un nuovo stampato floreale che parte da un'opera di un'artista contemporanea: un dipinto di vasi di fiori realizzato per Rubelli dalla pittrice inglese Sally Anne Fitter. I vasi di rose sono disposti secondo uno schema particolarmente elegante, in un'alternanza di pieni e di vuoti. Sally è un disegno esuberante e gioioso.

100%CO

Heavy use



Colours

3

Width 150cm - 59"

Horizontal Repeat 48.5cm - 19"

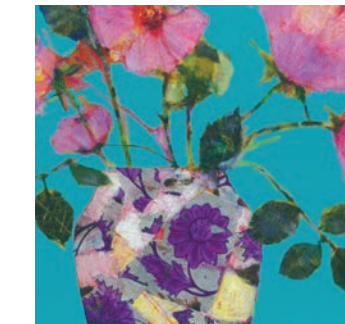
Vertical Repeat 86cm - 34"



Full width repeat



30609 1 Giallo



30609 2 Turchese



30609 3 Albicocca

30610 C'est Bizarre

Printed on silk and inspired by a classic pattern from the Rubelli archives, C'est Bizarre is a digital print on a refined silk grosgrain ground. A process of creative reinterpretation of a precious historical document, brought up to date thanks to the inclusion of lively painted flowers (the same as in the Sally print).

Stampato su seta. Ispirato a un disegno classico proveniente dall'archivio Rubelli, C'est Bizarre è una stampa digitale su un raffinato fondo cannetino in seta. Un processo di rilettura creativa di un prezioso documento storico, reso attuale grazie all'inserimento di vivaci fiori dipinti (gli stessi dello stampato Sally).

76%CO 17%SE 7%VI

Light use



Colours

2

Width

135cm - 53"

Horizontal Repeat

33.5cm - 13"

Vertical Repeat

77cm - 30.5"



30610 1 Avorio

Full width repeat



30610 2 Grigio Perla

Full width repeat

TEXTURES & VELVETS

30606 King

A luxe lampas characterised by a textured golden surface reminiscent of Murano glass with golden lamination century. The combination of glass and gold references the "sommersi" glass created by the Venetian architect and designer Carlo Scarpa. In King, gold, starring alongside the silk, takes on the reflections of the colour of each version and gives an ever-modern touch of glamour.

63%VI 26%SE 11%PM

Light use



Un lampasso prezioso caratterizzato da una superficie dorata martellata che richiama i vetri di Murano con lamina dorata. L'incontro tra vetro e oro rimanda ai vetri "sommersi" dell'architetto e designer veneziano Carlo Scarpa. L'oro, protagonista con la seta, acquista i riflessi del colore di ciascuna variante e conferisce un tocco glamour sempre attuale.

Colours

10

Width

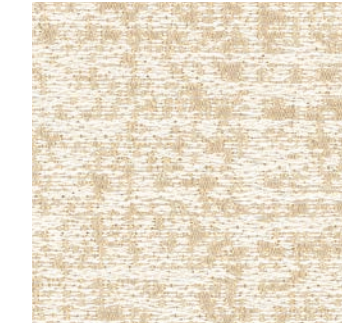
135cm - 53"

Horizontal Repeat

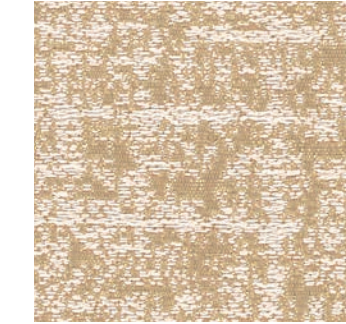
-

Vertical Repeat

-



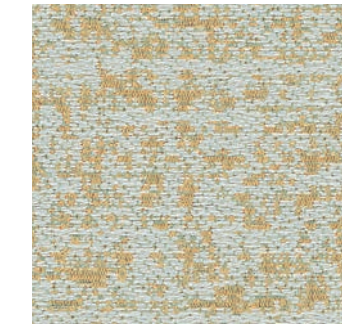
30606 1 Avorio/reversible *



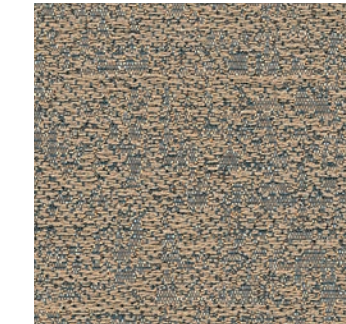
30606 2 Segale/reversible *



30606 3 Pietra/reversible *



30606 4 Madreperla/reversible *



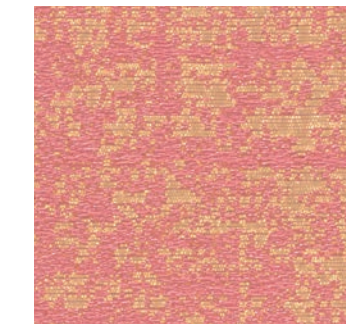
30606 5 Ardesia/reversible *



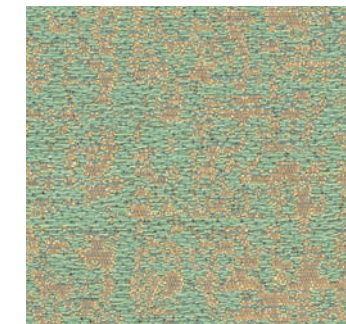
30606 6 Legno/reversible *



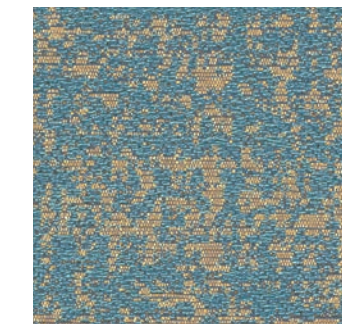
30606 7 Dorata/reversible *



30606 8 Rosa/reversible *



30606 9 Giada/reversible *



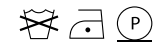
30606 10 Pavone/reversible *

30607 Glassweave

An elegant iridescent faux uni that recalls the surface of engraved glass. Glass Weave captures the light and effects typical of worked glass. A "glassy" fabric which references the almost incorporeal transparency of Murano glass and in particular the artistic glass creations of Venice architect and designer Carlo Scarpa.

42%CO 21%AC 19%VI 18%CU

Light use



Un elegante falso-unito cangiante che richiama la superficie del vetro molato. Glass Weave cattura la luce e gli effetti tipici del vetro lavorato. Un tessuto "vetroso" che ricorda la trasparenza quasi incorporea del vetro di Murano, in particolare delle creazioni in vetro dell'architetto e designer veneziano Carlo Scarpa. Delicati e ricercati i colori.

Colours 22

Width 140cm - 55"

Horizontal Repeat -

Vertical Repeat -



30607 1 Avorio *



30607 2 Opale *



30607 3 Nude *



30607 4 Sabbia *



30607 5 Argilla *



30607 6 Legno Di Rosa *



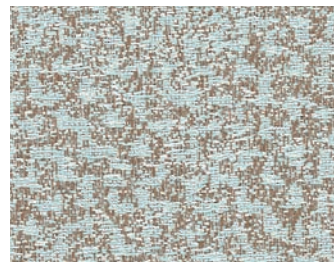
30607 7 Legno *



30607 8 Talpa *



30607 9 Grigio *



30607 10 Madreperla *



30607 11 Polvere *



30607 12 Acquamarina *



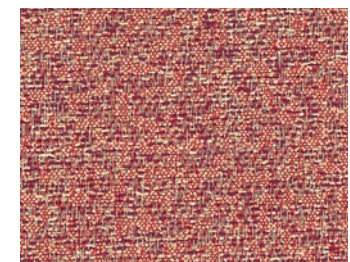
30607 13 Dorata *



30607 14 Pesco *



30607 15 Rosa *



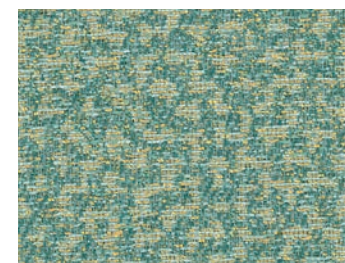
30607 16 Melograno *



30607 17 Rubino *



30607 18 Tiglio *



30607 19 Reseda *



30607 20 Acqua *



30607 21 Pavone *



30607 22 Azzurro *

Abacus

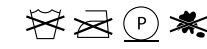
Rubelli 2023

30611 Seltz

Iridescent velvet, like Spritz (already in the collection), but fuller and with a contemporary look. In soft cotton, with a stain-resistant treatment, it is available in 19 versions, each played out on two shades. Seltz demonstrates how the rendering of colour in velvet is unrivalled and the way it catches the light is unique.

[100%CO] 90%CO 10%PA

Heavy use



Velluto cangiante, come lo Spritz (già in collezione), ma più corposo e dall'aspetto contemporaneo. In morbido cotone, con trattamento antimacchia, è disponibile in 19 varianti, ciascuna giocata su due toni. Seltz dimostra come la resa del colore nel velluto non ha eguali: il modo in cui cattura la luce è unico.

Colours 19

Width 140cm - 55"

Horizontal Repeat -

Vertical Repeat -



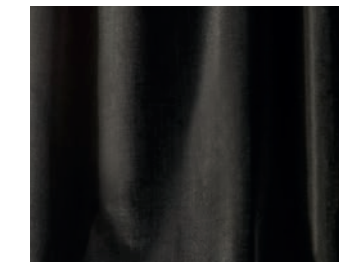
30611 1 Avorio



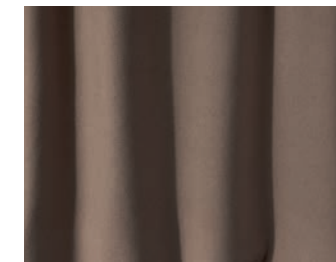
30611 2 Sabbia



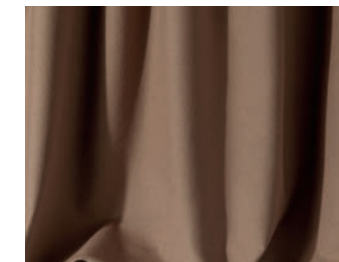
30611 3 Argento



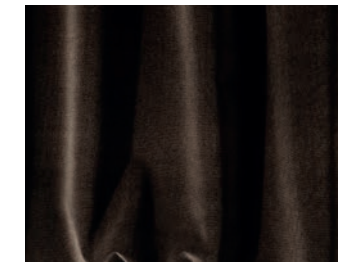
30611 4 Antracite



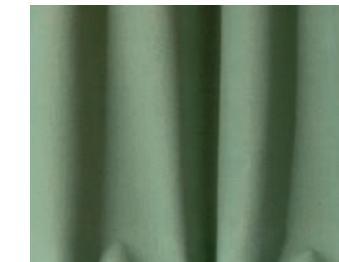
30611 5 Tortora



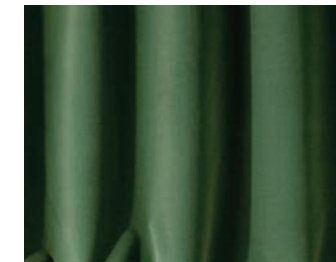
30611 6 Legno



30611 7 Marrone



30611 8 Giada



30611 9 Verde



30611 10 Pavone



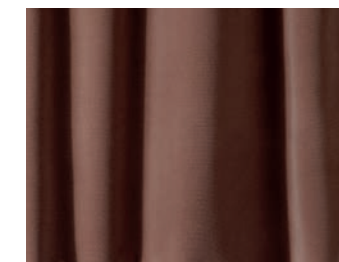
30611 11 Acqua



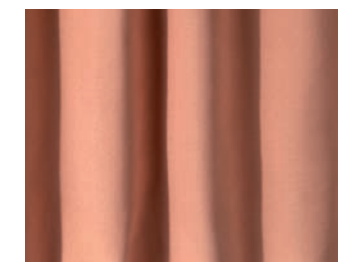
30611 12 Azzurro



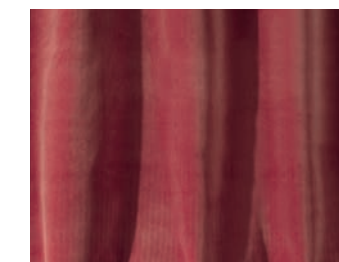
30611 13 Blu



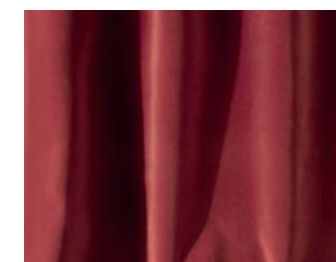
30611 14 Legno Di Rosa



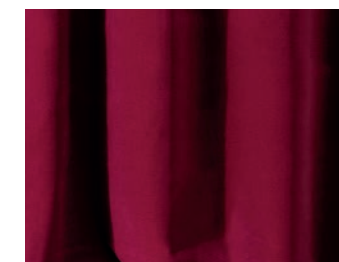
30611 15 Pesco



30611 16 Geraneo



30611 17 Ruggine



30611 18 Petunia



30611 19 Grigio

Frammenti Veneziani

Rubelli 2023

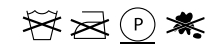
30612 Shadow

Plain velvet made of mercerised cotton that gives it shine and elegance. The way it catches the light is unique. Shadow has streaks on the ground that give it a lived-in appearance. It is stain- and crash resistant and is available in a very wide palette that matches all the colours in the collection.

Velluto unito realizzato in cotone mercerizzato che lo rende lucido ed elegante. Il modo in cui cattura la luce è unico. Shadow presenta delle striature sul fondo che gli conferiscono un aspetto vissuto. Ha un trattamento antimacchia, il pelo non si schiaccia ed è disponibile in una vastissima palette che ben si abbina a tutti i colori della collezione.

[100%CO] 80%CO 20%PL

Heavy use



Colours 36

Width 145cm - 57"

Horizontal Repeat -

Vertical Repeat -



30612 3 Sabbia



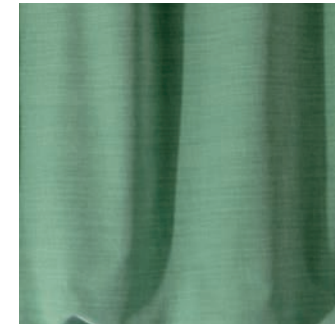
30612 4 Spago



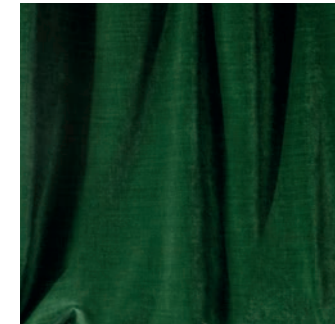
30612 5 Legno



30612 6 Argilla



30612 19 Giada



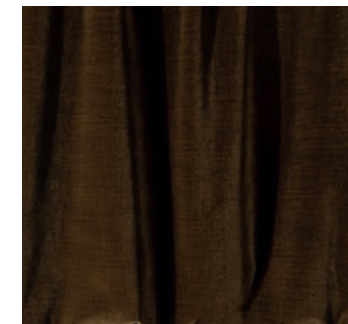
30612 20 Pino



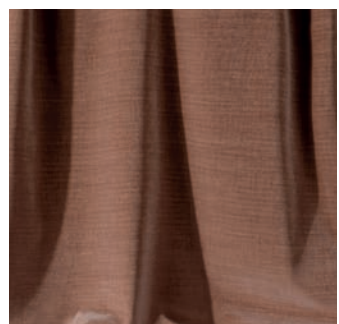
30612 21 Laguna



30612 22 Acquamarina



30612 7 Marrone



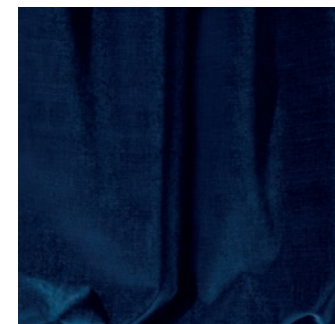
30612 8 Legno di Rosa



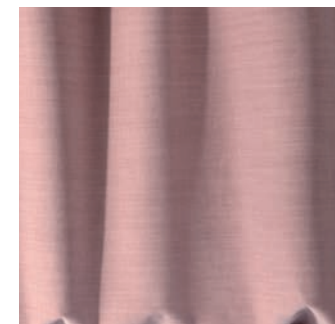
30612 9 Madreperla



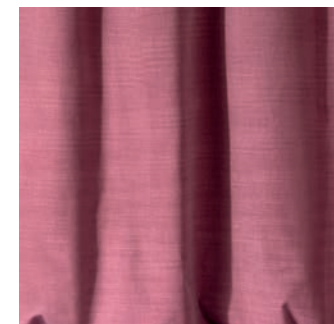
30612 10 Argento



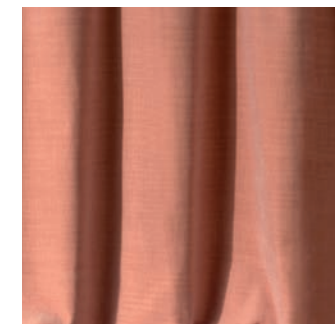
30612 27 Blu



30612 28 Cipria



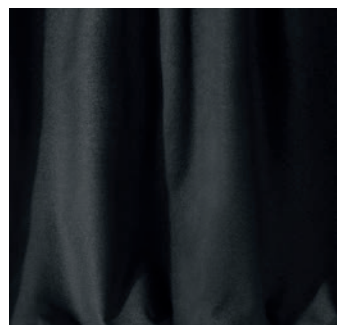
30612 29 Rosa



30612 30 Pesco



30612 11 Grigio



30612 12 Antracite



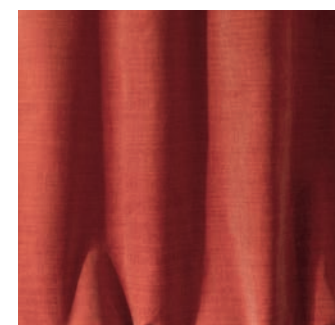
30612 13 French Gray



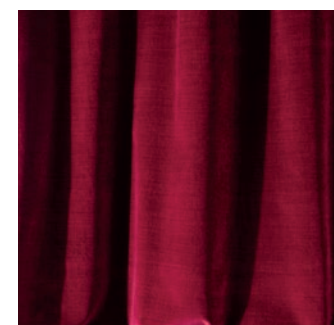
30612 14 Oro Vecchio



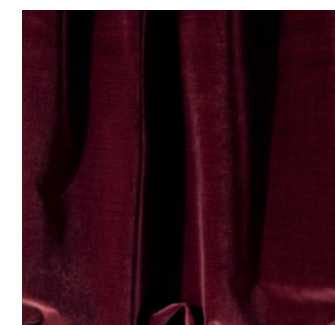
30612 31 Rosa Antico



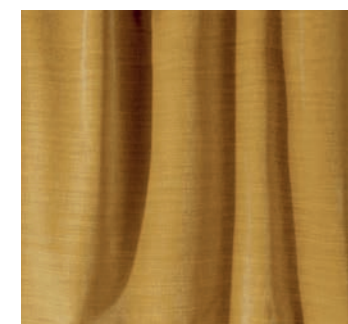
30612 32 Corallo



30612 33 Rosso



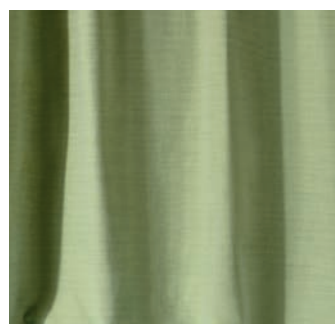
30612 34 Bordeaux



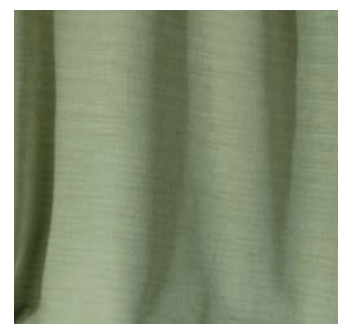
30612 15 Oro



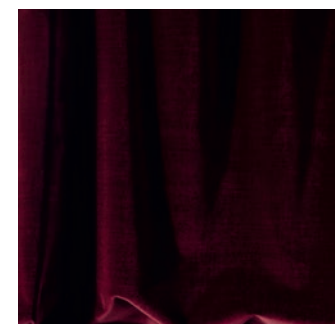
30612 16 Giallo



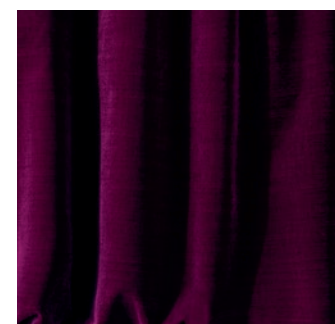
30612 17 Salice



30612 18 Lichene



30612 35 Rubino



30612 36 Ciclamino

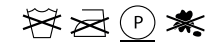
30613 Dandy

Striped velvet. A new interpretation of the Corduroy velvet. It offers, even in its name, a casual elegance that is always up to date. Full-bodied and matte, it references a design in vogue in the 1970s. Dandy sets out to differentiate itself from traditional striped velvet, presenting itself as a 'young' velvet, ideal for contemporary upholstery.

Velluto rigato. Una nuova interpretazione del velluto Corduroy. Propone, anche nel nome, un'eleganza casual sempre attuale. Corposo e opaco, rimanda ad un design in voga negli anni Settanta. Dandy vuole differenziarsi dai velluti rigati della tradizione, presentandosi come un velluto "giovane", ideale per imbottiti contemporanei.

[100%CO] 87%CO 13%PL

Heavy use



Colours

18

Width

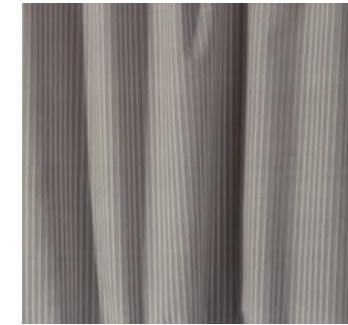
140cm - 55"

Horizontal Repeat

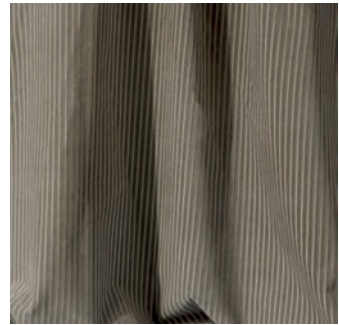
11cm - 0.5"

Vertical Repeat

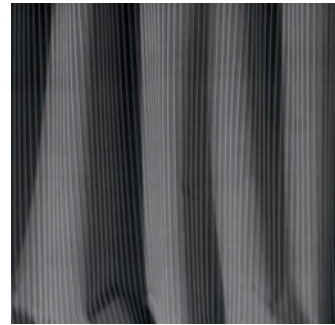
-



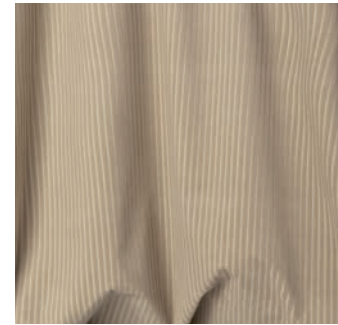
30613 3 Argilla



30613 4 Tabacco



30613 5 Ardesia



30613 6 Sabbia



30613 7 Paglia



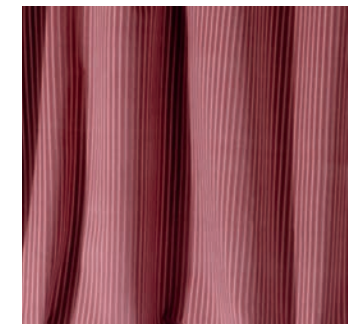
30613 8 Oro



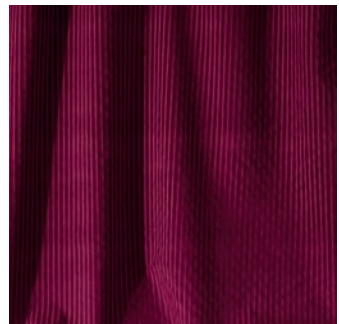
30613 9 Cuoio



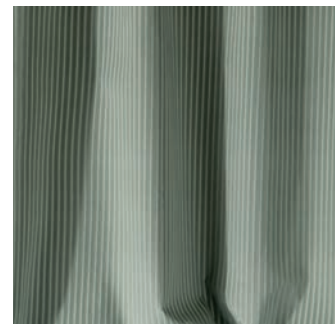
30613 10 Pesco



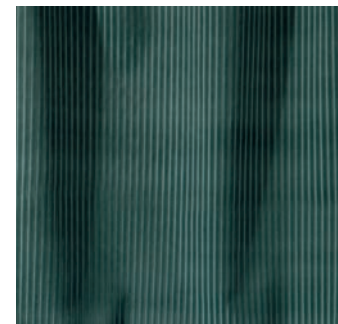
30613 11 Rosa



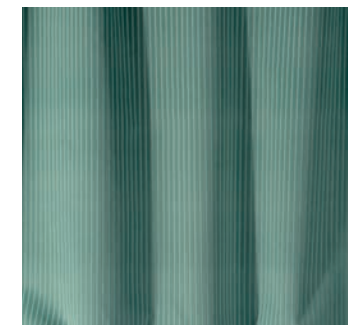
30613 12 Rubino



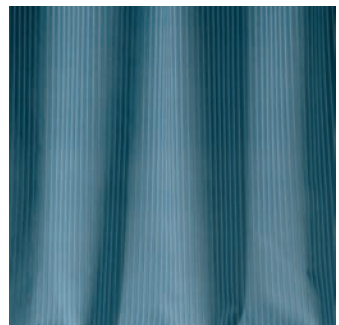
30613 13 Giada



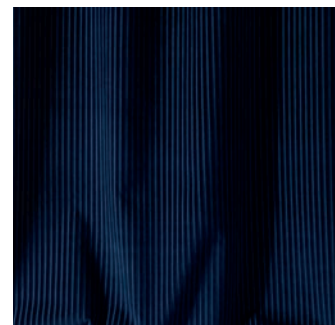
30613 14 Pino



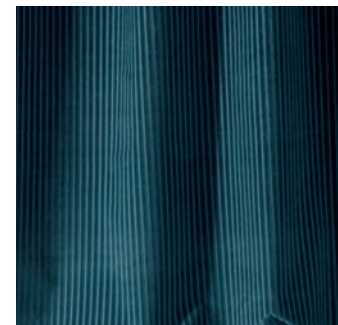
30613 15 Acqua



30613 16 Azzurro



30613 17 Blu



30613 18 Pavone

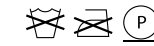
30614 Tierra

High-impact jacquard velvet made from a mix of different yarns. It is the result of an elaborate technical construction. A material texture reminiscent of the surface of a fine, lived-in carpet. In a mélange of iridescent colours, ground and pile effects create striking stripes and reference contemporary painting creations.

Velluto jacquard di grande effetto. Nasce da un mix di diversi filati ed è frutto di una elaborata costruzione tecnica. Una texture materica che ricorda la superficie di un pregiato tappeto vissuto. In un mélange di colori a tratti cangianti, effetti di fondo ed effetti di pelo danno vita a suggestive striature e rimandano a creazioni pittoriche contemporanee.

[100%VI] 42%VI 32%PL 26%CO

Heavy use



Colours

4

Width

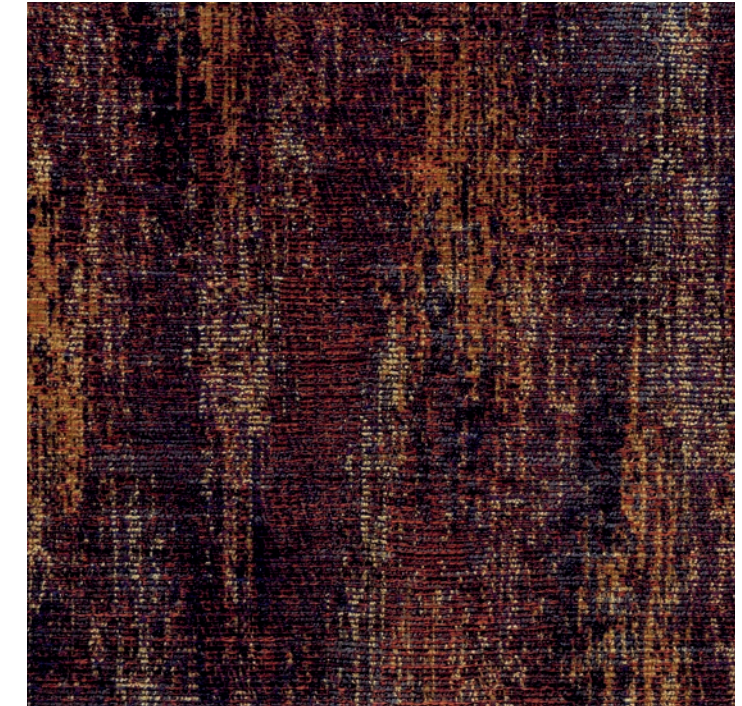
135cm - 53"

Horizontal Repeat

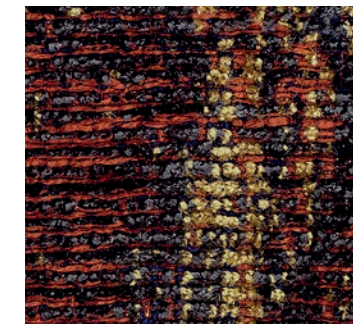
33cm - 13"

Vertical Repeat

64cm - 25"



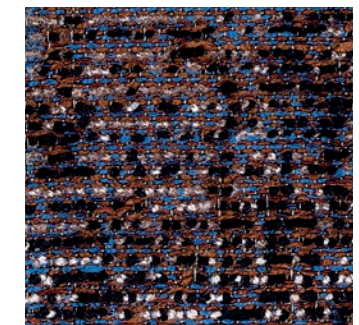
Quarter Width Repeat



30614 1 Cotto *



30614 2 Sabbia *



30614 3 Nero *



30614 4 Rosso *

30615 Saturno

Faux uni that crosses over into a deconstructed geometry of horizontal lines. A mélange of wefts of five different yarns, composed in a subtle play of different shades of a single colour. All 12 versions have a neutral base that recalls Carlo Scarpa's 'transparent' *murrine*. Saturno has the warp in evo nylon, an eco-sustainable yarn used by Rubelli for some years now.

Falso-unito che sconfinava in una geometria scomposta di tratti orizzontali. Mélange di trame di 5 diversi filati, composti in un gioco sottile di toni diversi di un singolo colore. Tutte le 12 varianti hanno una base neutra che richiama le murrine "trasparenti" di Carlo Scarpa. Saturno ha l'ordito in nylon evo, filato ecosostenibile utilizzato da Rubelli già da alcuni anni.

26%WO 24%PA-eco 17%CO 12%AC

12%VI 9%LI

Heavy use

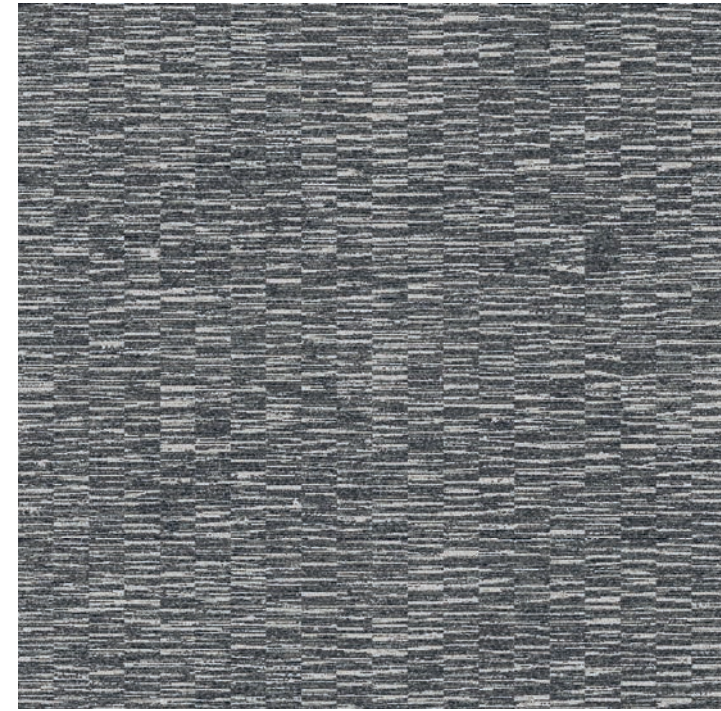


Colours 12

Width 140cm - 55"

Horizontal Repeat -

Vertical Repeat -



Half Width Repeat



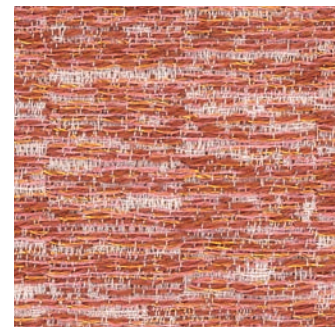
30615 5 Marrone *



30615 6 Argento *



30615 7 Grigio *



30615 8 Cotto *



30615 9 Lampone *



30615 10 Giada *



30615 1 Avorio *



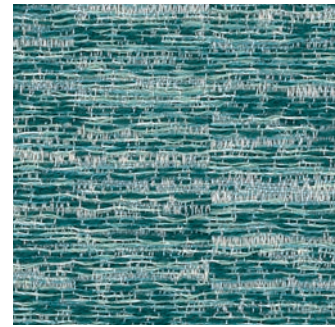
30615 2 Pietra *



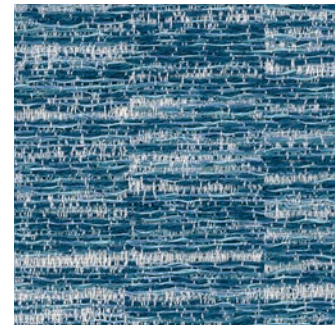
30615 3 Sabbia *



30615 4 Ebano *



30615 11 Acqua *



30615 12 Azzurro *

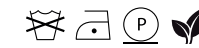
30616 Jupiter

A contemporary jacquard whose surface pattern recalls the materials that Carlo Scarpa used in his architectural works. Some versions of Jupiter evoke the reflections of daylight and moonlight on the water of the lagoon. Jupiter has the warp in evo nylon, an eco-sustainable yarn used by Rubelli for some years now.

Jacquard contemporaneo, il cui disegno di superficie richiama i materiali che Carlo Scarpa utilizzava nelle sue opere architettoniche. Alcune varianti evocano i riflessi della luce del giorno e della luna sull'acqua della laguna. Jupiter ha l'ordito in nylon evo, filato ecosostenibile utilizzato da Rubelli già da alcuni anni.

41%PL 27%VI 20%PA-eco 12%LI

Heavy use



Colours 5

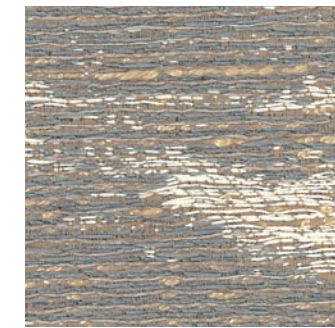
Width 135cm - 53"

Horizontal Repeat 67.5cm - 26.5"

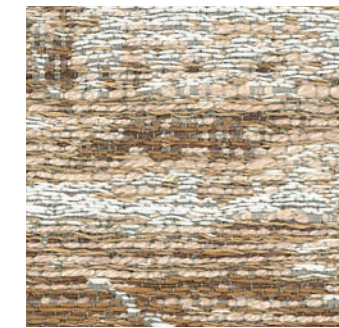
Vertical Repeat 62cm - 24.5"



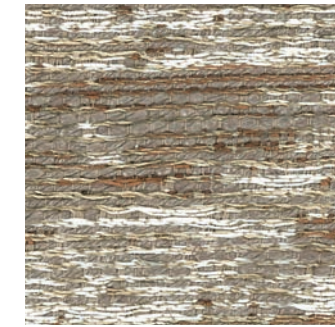
30616 1 Madreperla Half Width Repeat



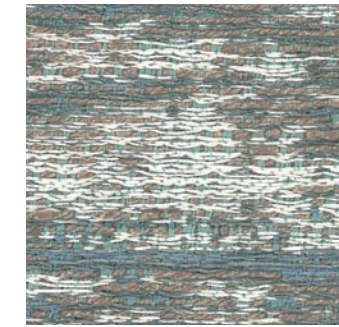
30616 2 Pietra *



30616 3 Legno *



30616 4 Talpa *



30616 5 Piombo *

30617 Moon Promenade

Textural jacquard. An expression of pure textile creativity, it required the use of seven different wefts. The irregular surface is reminiscent of the surface of the moon, but also of the materials used by Carlo Scarpa for his architecture in the 1960s. Moon Promenade has a warp in evo nylon, an eco-sustainable yarn used by Rubelli for some years now.

Jacquard materico. Espressione di pura creatività tessile, ha richiesto l'impiego di 7 diverse trame. La superficie irregolare ricorda la superficie lunare, ma anche quella dei materiali usati da Carlo Scarpa per le sue architetture negli Anni Sessanta. Moon Promenade ha l'ordito in nylon evo, filato ecosostenibile utilizzato da Rubelli già da alcuni anni.

44%CO 34%PL 22%PA-eco

Heavy use



Colours 7

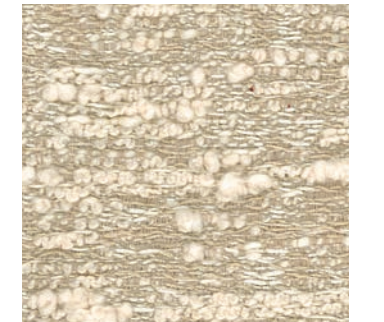
Width 135cm - 53"

Horizontal Repeat 34cm - 13.5"

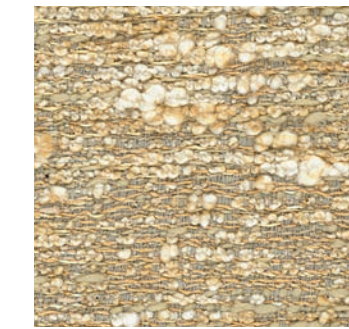
Vertical Repeat 60cm - 23.5"



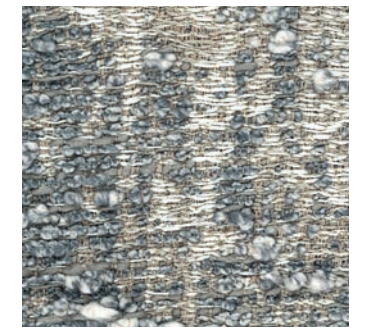
30617 1 Avorio *



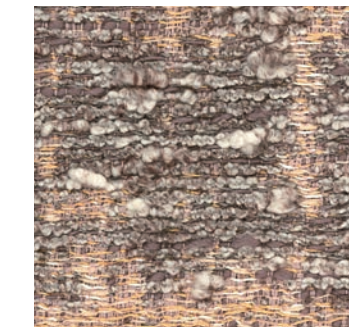
30617 2 Pietra *



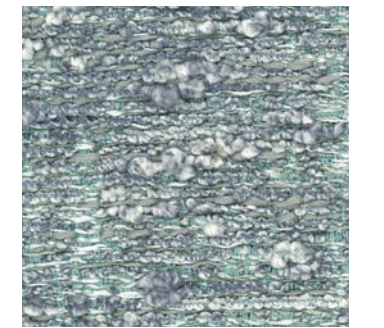
30617 3 Nocciola *



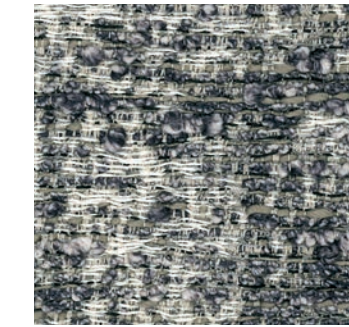
30617 4 Grigio *



30617 5 Rosa Antico *



30617 6 Acqua *



30617 7 Grafite *

30618 Neptune

A contemporary jacquard, light and velvety thanks to the use of a flocked chenille. The pattern recalls organic vegetable forms inspired by the algae that populate the waters of the Venice lagoon in a play of overlapping planes characterised by the shiny/matte contrast. Neptune has a warp in evo nylon, an eco-sustainable yarn used by Rubelli for some years now.

Jacquard contemporaneo, leggero e vellutato grazie all'uso di una ciniglia floccata. Il disegno richiama forme organiche vegetali ispirate alle alghe che popolano la laguna veneziana in un gioco di piani sovrapposti caratterizzati dal contrasto lucido/opaco. Neptune ha l'ordito in nylon evo, filato ecosostenibile utilizzato da Rubelli già da alcuni anni.

57%PL 26%PA-eco 15%PA 2%PC

Heavy use



Colours 5

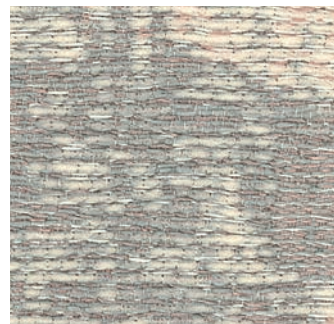
Width 135cm - 53"

Horizontal Repeat 67.5cm - 26.5"

Vertical Repeat 98cm - 38.5"



Half Width Repeat



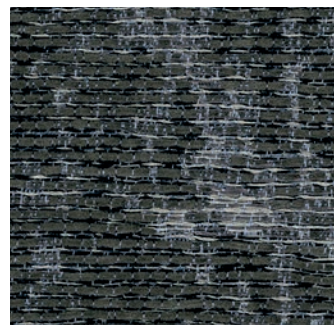
30618 1 Madreperla *



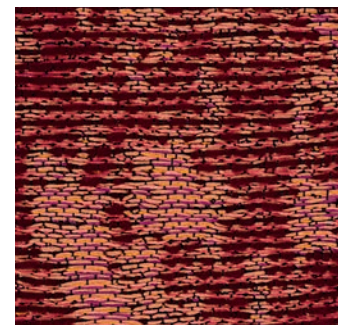
30618 2 Sabbia *



30618 3 Ambra *



30618 4 Ardesia *



30618 5 Melograno *

30619 Scott

Contemporary jacquard. Scott features irregular 'spots' in relief, a pattern reminiscent of the glass *murrine* created by Venice architect and designer Carlo Scarpa. Thanks to the use of a cord yarn, it has a natural matte appearance and a cottony hand. It is suitable for upholstery.

Jacquard contemporaneo. Scott presenta delle "macchie" irregolari in rilievo: un disegno che rimanda alle murrine in vetro create dall'architetto e designer veneziano Carlo Scarpa. Grazie all'uso di una trama di cordonetto ha un aspetto opaco naturale e una mano cotonosa. È adatto per imbottiti.

100%PL flame retardant

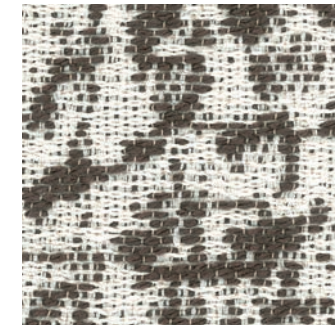


Colours 15

Width 140cm - 55"

Horizontal Repeat 35cm - 14"

Vertical Repeat 53cm - 21"



30619 1 Pepe Sale *



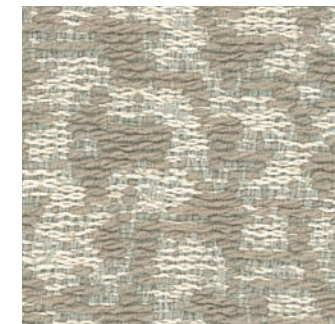
30619 2 Avorio *



30619 3 Sabbia *



30619 4 Segale *



30619 5 Madreperla *



30619 6 Argilla *



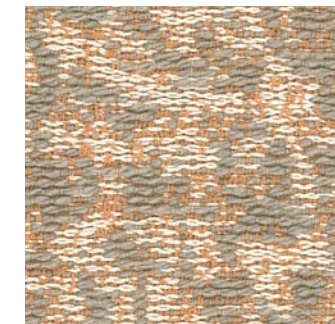
30619 7 Grigio *



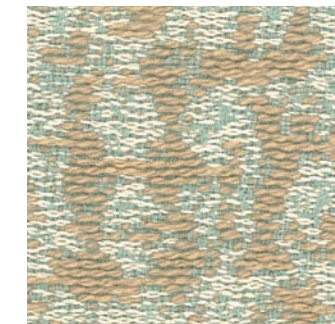
30619 8 Legno *



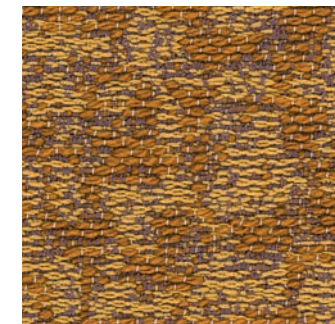
30619 9 Tabacco *



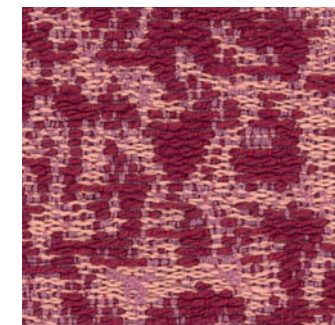
30619 10 Nude *



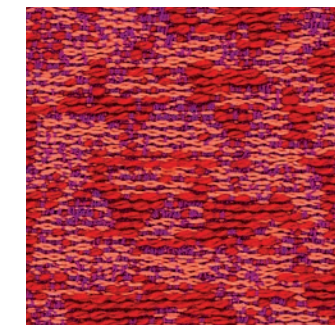
30619 11 Acqua *



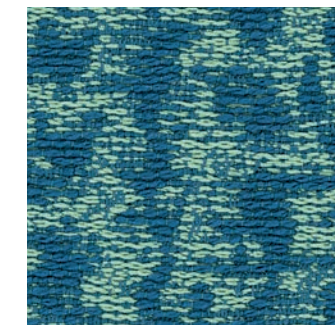
30619 12 Dorata *



30619 13 Ciclamino *



30619 14 Petunia *



30619 15 Pavone *

30620 Zelda

A technical faux uni, enhanced with touches of light. The micro pattern of the surface, with an alternating shiny/matte play, comes from work on the weaves. Suitable for upholstery, Zelda is a must-have multitasker in no less than 38 colours.

Un falso-unito tecnico, impreziosito da tocchi di luce. Il micro-disegno di superficie, giocato sull'alternanza lucido/opaco, nasce da uno studio sugli intrecci. Adatto per imbottiti, Zelda è un irrinunciabile passe-partout in ben 38 colori.

100%PL Trevira CS
Heavy use



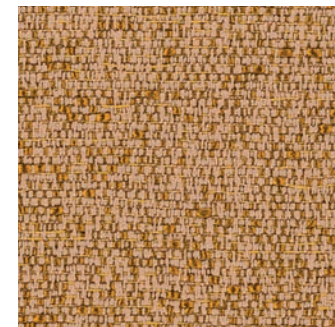
Colours 38
Width 145cm - 57"
Horizontal Repeat -
Vertical Repeat -



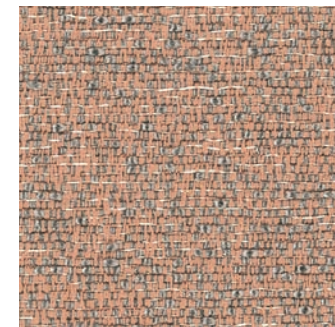
30620 1 Avorio *



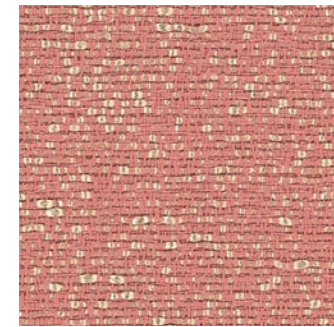
30620 2 Burro *



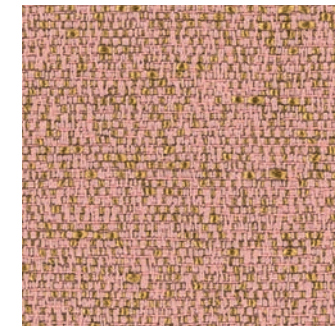
30620 19 Terra Di Siena *



30620 20 Legno Di Rosa *



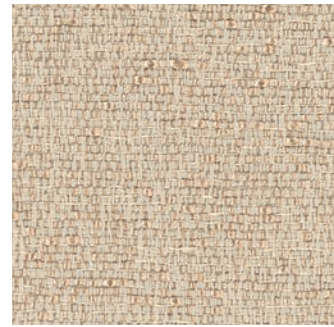
30620 21 Rosa *



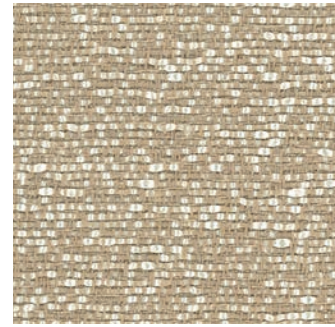
30620 22 Rosa Antico *



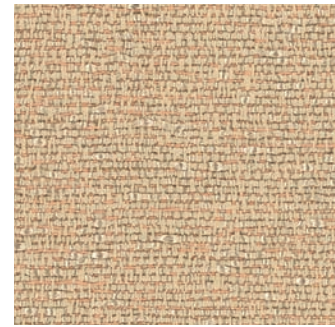
30620 3 Beige *



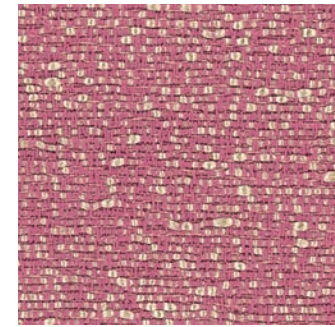
30620 4 Cipria *



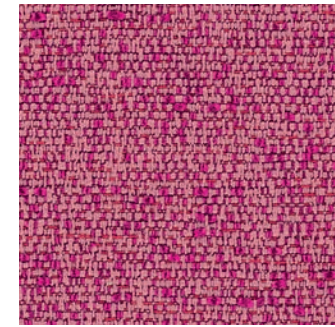
30620 5 Sabbia *



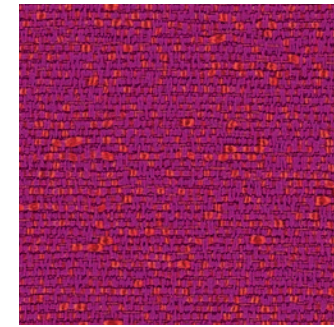
30620 6 Nude *



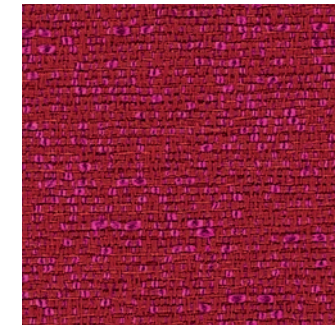
30620 23 Fragola *



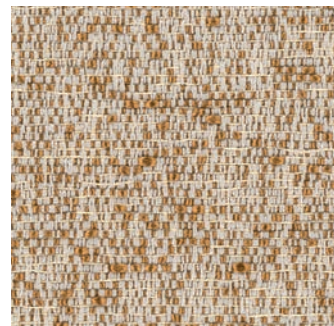
30620 24 Fuxia *



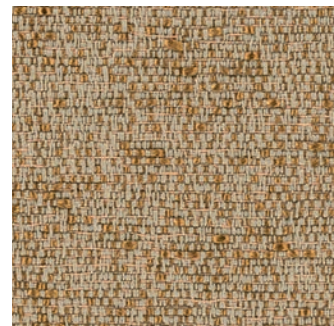
30620 25 Petunia *



30620 26 Lampone *



30620 7 Muesli *



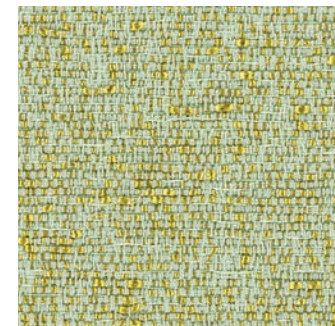
30620 8 Legno *



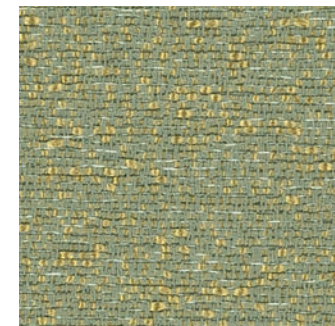
30620 9 Madreperla *



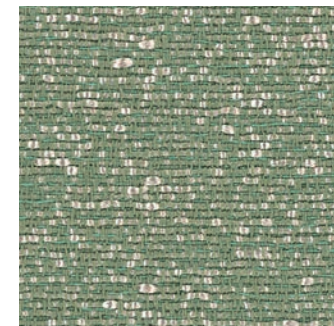
30620 10 Grigio Perla *



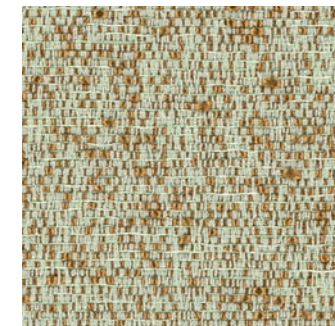
30620 27 Salice *



30620 28 Alga *



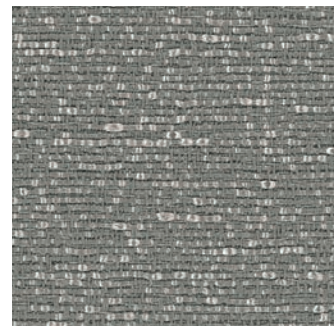
30620 29 Giada *



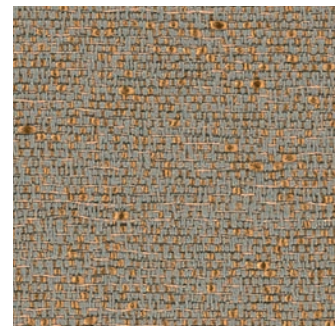
30620 30 Salvia *



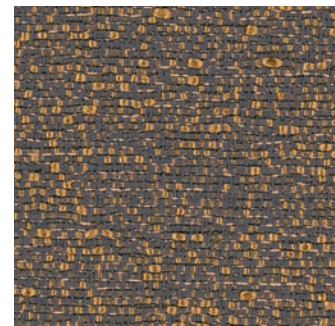
30620 11 Pepe *



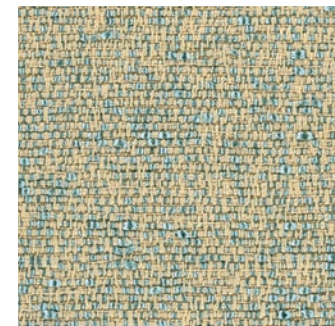
30620 12 Grigio *



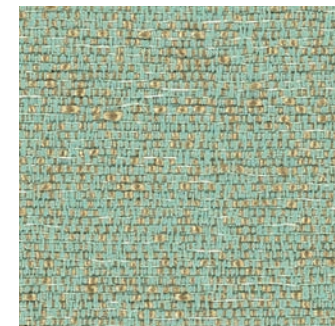
30620 13 Talpa *



30620 14 Marrone *



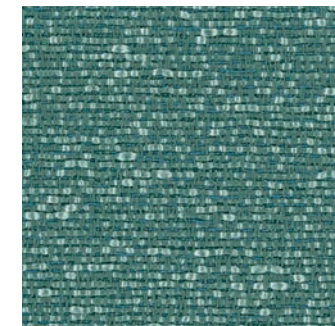
30620 31 Nuvola *



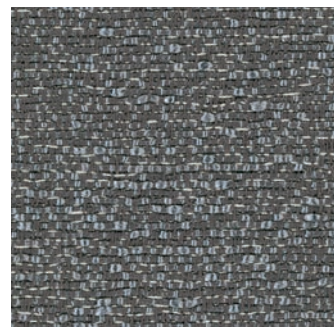
30620 32 Acqua *



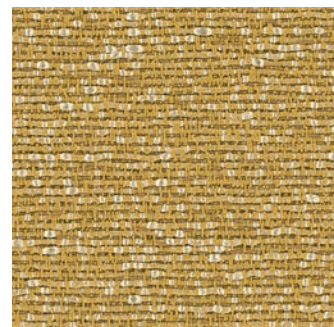
30620 33 Laguna *



30620 34 Reseda *



30620 15 Antracite *



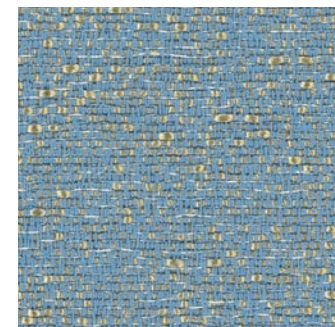
30620 16 Oro *



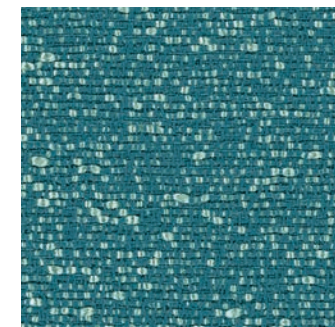
30620 17 Tabacco *



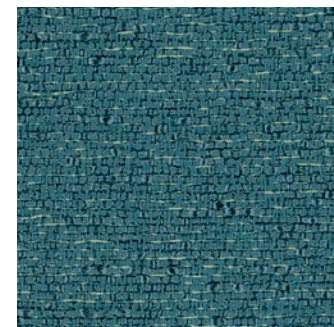
30620 18 Castagna *



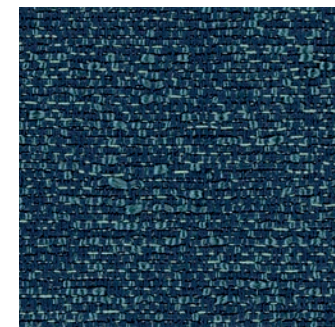
30620 35 Azzurro *



30620 36 Pavone *



30620 37 Ottanio *



30620 38 Blu *

30621 Citymap

Micro jacquard. Textural and three-dimensional, and also very pleasing to the touch thanks to the use of a soft chenille weft. It features an interrupted geometry, an irregular grid on a contrasting ground, reminiscent of a city plan. It is suitable for upholstery.

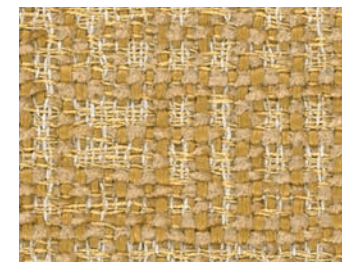
100%PL flame retardant



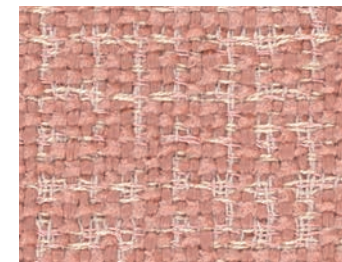
30621 1 Avorio *



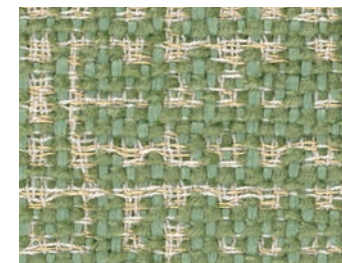
30621 5 Sabbia *



30621 9 Giallo *



30621 13 Rosa Antico *



30621 17 Verde *

Un micro-jacquard. Materico e tridimensionale, è molto piacevole al tatto grazie all'uso di una morbida ciniglia in trama. Presenta una geometria interrotta, una griglia irregolare - su un fondo a contrasto - che richiama la pianta di una città. Adatto per imbottiti.

Colours 20

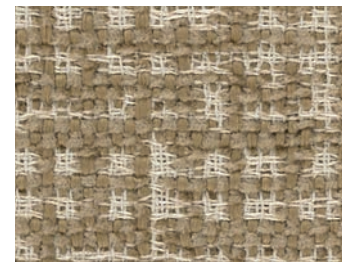
Width 140cm - 55"

Horizontal Repeat -

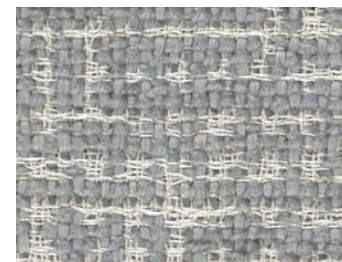
Vertical Repeat -



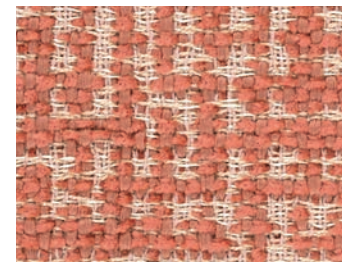
30621 2 Argilla *



30621 6 Legno *



30621 10 Madreperla *



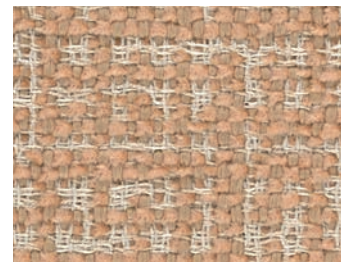
30621 14 Rosa *



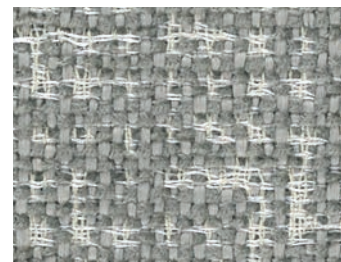
30621 18 Acquamarina *



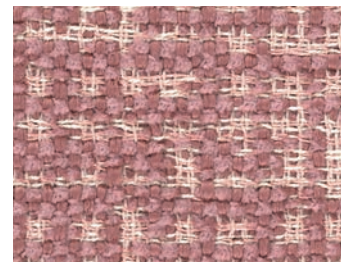
30621 3 Pietra *



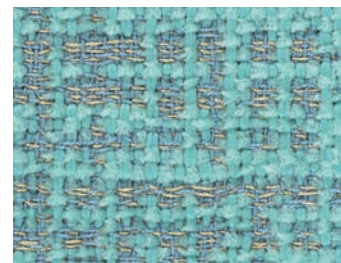
30621 7 Nude *



30621 11 Grigio *



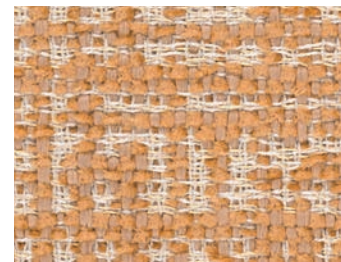
30621 15 Lampone *



30621 19 Acqua *



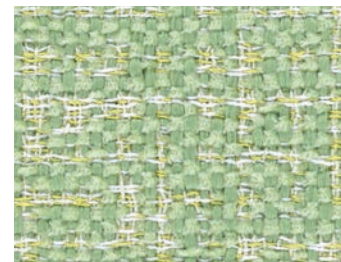
30621 4 Avena *



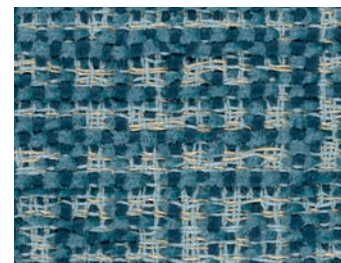
30621 8 Albicocca *



30621 12 Stagno *



30621 16 Salice *



30621 20 Blu *

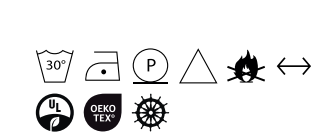
SHEERS & DRAPERY

30622 Charleston

Textured curtain, in double width, reminiscent of the filigree effect of the *murrine* of Carlo Scarpa's glass creations. A craquelé surface, run through by a slim grid of irregular lines. In 4 versions, all characterised by a luxe metallic effect.

Tenda operata in doppia altezza. Richiama l'effetto filigrana delle murrine delle creazioni in vetro di Carlo Scarpa. Una superficie craquelé, solcata da un sottile reticolo di linee irregolari. In 4 varianti, tutte caratterizzate da un prezioso effetto metallico.

100%PL Trevira CS



30622 1 Pietra



30622 2 Sabbia



30622 3 Dorata



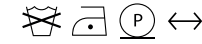
30622 4 Avorio

30623 Woolly

A lightweight, wool-blend curtain. Characterised by a very elegant 'narrow stripe' pattern, it comes in 3 colours. When hung, it has a perfect drape, typical of wool.

Una tenda leggera, misto-lana. Caratterizzata da un motivo 'a righina' molto elegante. Messa in opera, ha una caduta perfetta, tipica della lana.

62%WO 38%PL
Drapery



Colours 3
Width 300cm - 118"
Horizontal Repeat -
Vertical Repeat -



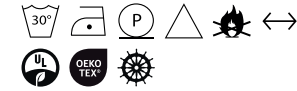
Abacus

30624 Sax

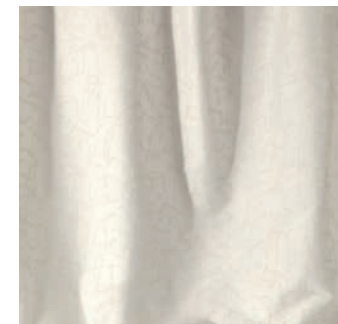
Textured curtain. A sort of mysterious score made up of free marks, like the notes produced by a saxophone. The marks, matte, stand out against the satin ground, especially in the grey version. A silky-looking curtain with a very appealing hand.

Tenda operata. Una sorta di partitura misteriosa fatta di segni in libertà, come le note prodotte da un sax. I segni, opachi, sono in rilievo sul fondo di raso particolarmente evidenti sul fondo grigio. Una tenda dall'aspetto serico e con una mano molto piacevole.

100%PL Trevira CS
Drapery



Colours 3
Width 305cm - 120"
Horizontal Repeat 38cm - 15"
Vertical Repeat 22cm - 8.5"



30624 1 Avorio/reversible



30624 2 Sabbia/reversible



30624 3 Argilla/reversible: front



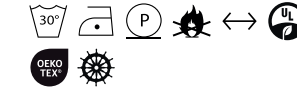
30624 3 Argilla/reversible: back

30625 Twilight

A drapery curtain, opaque and with a good drape. It features a micro surface pattern, made from matte and shiny yarns that react differently to the dyeing process. Twilight is available in 9 colours, all in pastel shades.

Tenda da drappaggio coprente e dalla morbida caduta. Presenta un micro-disegno di superficie, realizzato con filati opachi e filati lucidi che reagiscono diversamente al processo di tintura. Twilight è disponibile in 9 colori, tutti nei toni pastello.

100%PL Trevira CS
Drapery



Colours 9
Width 300cm - 118"
Horizontal Repeat -
Vertical Repeat -



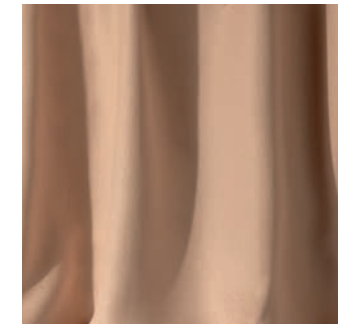
30625 1 Bianco



30625 2 Avorio



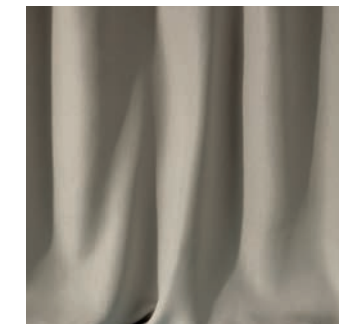
30625 3 Paglia



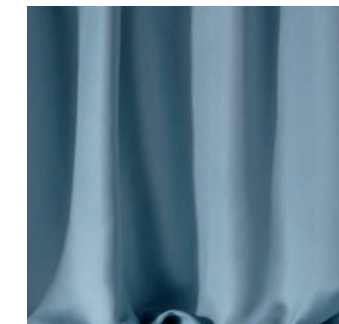
30625 4 Nude



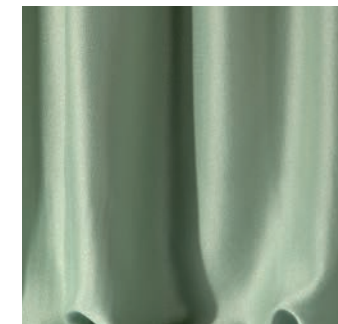
30625 5 Sabbia



30625 6 Madreperla



30625 7 Azzurro



30625 8 Salice



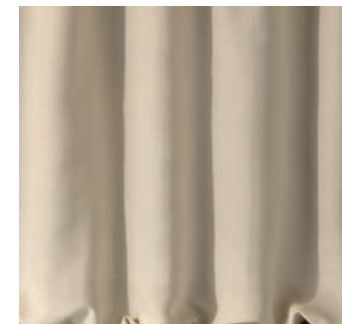
30625 9 Acqua

Frammenti Veneziani

Rubelli 2023



30623 1 Avorio



30623 2 Sabbia



30623 3 Argilla

Rubelli 2023

30626 Streetlight

A drapery curtain, opaque and with a good drape. It features a micro surface pattern, made from matte and shiny yarns that react differently to the dyeing process. Streetlight is presented in six colours: strong, dark, saturated shades, with the exception of the white version.

Tenda da drappaggio coprente e dalla morbida caduta. Presenta un micro-disegno di superficie, realizzato con filati opachi e filati lucidi che reagiscono diversamente al processo di tintura. Streetlight è presentato in 6 colori: toni decisi, scuri, saturi, fatta eccezione per la variante bianca.

100%PL Trevira CS

Drapery



Colours

6

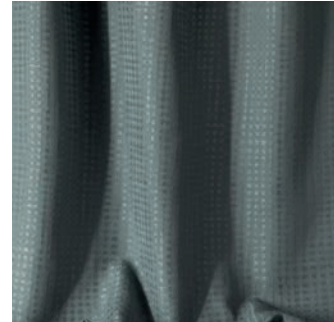
Width 300cm - 118"

Horizontal Repeat -

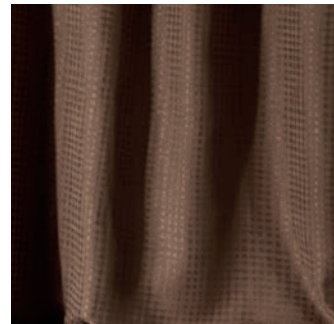
Vertical Repeat -



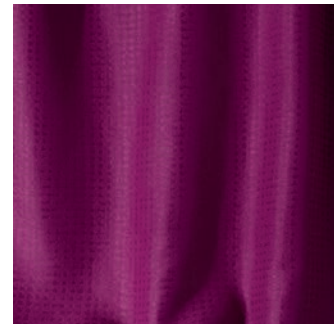
30626 11 Panna



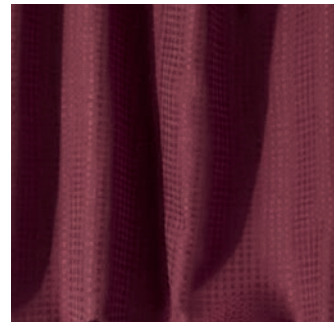
30626 12 Grigio



30626 13 Castagna



30626 14 Fuxia



30626 15 Bordeaux



30626 16 Pavone

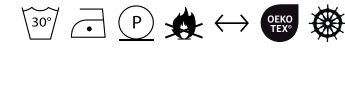
30627 Improvisation

Textured sheer, featuring irregular and variegated cross-hatching suspended on a transparent ground (like a murrina) made using the fil coupé technique. In the 4 versions, the cross-hatching changes colour according to the colour of the strokes themselves. A bright, contemporary motif.

Tenda operata. Presenta un tratteggio irregolare e variegato sospeso su un fondo trasparente (come in una murrina) realizzato con la tecnica del fil coupé. Nelle 4 varianti il tratteggio cambia colore a seconda del colore dei tratti stessi. Un motivo luminoso, contemporaneo.

100%PL Trevira CS

Drapery



Colours

4

Width 320cm - 126"

Horizontal Repeat 50cm - 19.5"

Vertical Repeat 60cm - 23.5"



30627 1 Ambra



30627 2 Sabbia



30627 3 Madreperla



30627 4 Avorio

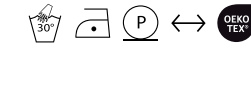
30628 Sandy

An informal, versatile curtain in linen and cotton. Full-bodied and textural, it comes in 3 colours, natural shades that recall the colours of white and gold sand.

Una tenda informale e versatile, in lino e cotone. Corposa e materica è presentata in 3 colori: toni naturali che richiamano il colore di sabbie bianche e dorate.

59%LI 31%CO 10%PA

Drapery



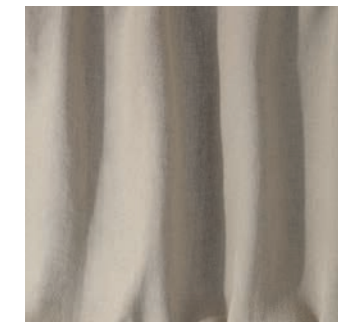
Colours

3

Width 310cm - 122"

Horizontal Repeat -

Vertical Repeat -



30628 1 Ecrú



30628 2 Avorio



30628 3 Bianco

30629 Jam Session

Decorative sheer in double width. Interrupted and suspended matte lines trace a contemporary lace pattern. The inspiration comes from the reflections of light on the waters of the Venice lagoon. Available in 2 light colours, Jam Session is railroaded.

Tenda decorativa in doppia altezza. Linee opache interrotte e sospese disegnano un pizzo contemporaneo. L'ispirazione viene dai riflessi della luce sull'acqua della laguna veneziana. Disponibile in 2 colori chiari, è ruotabile (ossia utilizzabile nei due sensi).

100%PL Trevira CS

Drapery



Colours

2

Width 315cm - 124"

Horizontal Repeat 28cm - 11"

Vertical Repeat 58cm - 23"



30629 1 Avorio



30629 2 Bianco

23046 Flax Wall

Contemporary faux uni, featuring the use of linen which gives it a natural appearance.
New element: the inclusion of a series of pastel colours that stand out from the bright and shiny white ground.

Finto-unito contemporaneo, caratterizzato dall'impiego del lino che gli conferisce un aspetto naturale.
Elemento di novità: l'inserimento di una serie di colori pastello che si staccano dal luminoso fondo bianco lucido.

100%Fabric on nonwoven
Wallcovering



Colours 10
Width 140cm - 55"
Horizontal Repeat -
Vertical Repeat -



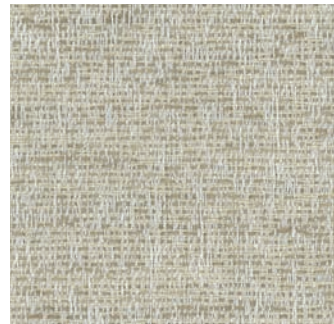
23046 1 Avorio *



23046 2 Burro *



23046 3 Pietra *



23046 4 Sabbia *



23046 5 Madreperla *



23046 6 Grafite *



23046 7 Acquamarina *



23046 8 Giada *



23046 9 Pesco *



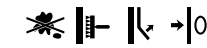
23046 10 Fuxia *

23047 Shimmering Wall

A texture of generous proportions. The weaving of natural yarns is illuminated by the metallic touch of lurex, which lends elegance and luxury: features that are enhanced by the use of fabric.

Una texture di generose proporzioni. L'intreccio di filati naturali si illumina grazie al tocco metallico del lurex che conferisce eleganza e preziosità: caratteristiche che vengono esaltate dall'utilizzo del tessuto.

100%Fabric on nonwoven
Wallcovering



Colours 5
Width 140cm - 55"
Horizontal Repeat 70cm - 27.5"
Vertical Repeat 70cm - 27.5"



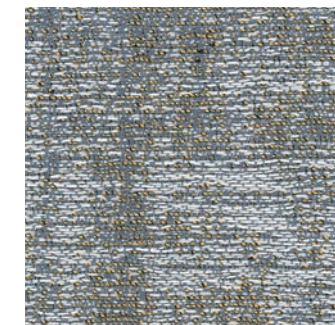
23047 1 Avorio



23047 2 Dorata *



23047 3 Acqua *



23047 4 Argento *



23047 5 Nero *

23048 Charme Wall

Translation from fabric Charme, it has the silky appearance of fabric and the sheen of metal.
The pattern/non-pattern is made up of broken lines, shapes that are the outlines of the typical pattern of pile-on-pile velvet, kept in the historical Rubelli archives.

Traduzione dal tessuto Charme, ha l'aspetto serico del tessuto e la lucentezza del metallo.
Il disegno/non-disegno è fatto di linee interrotte, forme che sono i contorni del disegno tipico del velluto ad inferriata custodito nell'archivio storico Rubelli.

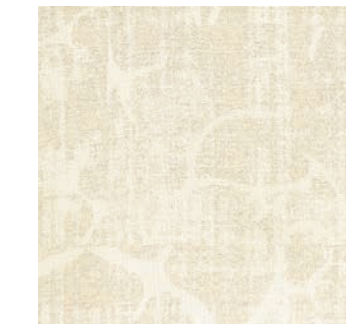
100%Fabric on nonwoven
Wallcovering



Colours 5
Width 140cm - 55"
Horizontal Repeat 70cm - 27.5"
Vertical Repeat 68cm - 27"



23048 1 Avorio Half Width Repeat



23048 2 Burro



23048 3 Dorata



23048 4 Bronzo



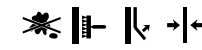
23048 5 Argento

23049 Silkglass Wall

Translation from fabric Silk Glass, it is a composition of damask "tesserae" from different eras (17th and 18th centuries) kept in the Rubelli historical archives. From the joining of small fragments comes a new silky and elegant pattern.

Traduzione dal tessuto Silk Glass, è una composizione di "tessere" di damaschi di diverse epoche (Seicento e Settecento) custoditi nell'archivio storico Rubelli. Dall'unione di piccoli frammenti nasce un nuovo pattern serico ed elegante.

100%Fabric on nonwoven Wallcovering



Colours 5
Width 140cm - 55"
Horizontal Repeat 70cm - 27.5"
Vertical Repeat 62cm - 24.5"



23049 1 Avorio



23049 2 Burro



23049 3 Pietra



23049 4 Sabbia



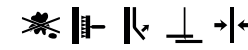
23049 5 Acqua

Eliodoro Wall

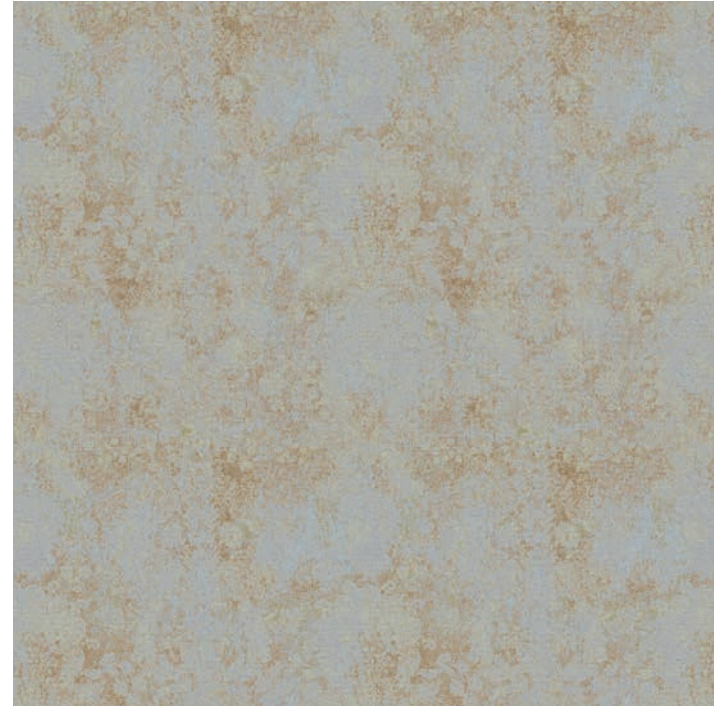
Translation from fabric to wall, Eliodoro Wall has the appearance of a precious metallic lace. The pattern is large, but not overbearing, for a discreet decoration. The effect is that of an old wall decoration with an oxidised, abraded surface.

Traduzione dal tessuto al murale, ha l'aspetto di un pizzo metallico prezioso. Il disegno è grande, ma senza superbia, per una decorazione discreta. Richiama l'effetto di una vecchia decorazione murale dalla superficie ossidata, abrasa.

100%Fabric on nonwoven Wallcovering



Colours 5
Width 135cm - 53"
Horizontal Repeat 67.5cm - 26.5"
Vertical Repeat 85cm - 33.5"



23050 4 Acqua



23050 1 Avorio



23050 2 Madreperla



23050 3 Sabbia



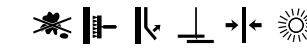
23050 5 Petro

23051 Fresco Wall

The Fresco Wall wallcovering on nonwoven base takes its name from traces of wall painting. The historical decorative pattern of Fresco Wall is a perfect reproduction of a play on shiny and matte still visible on walls in Venice.

Il rivestimento murale su base TNT Fresco Wall, prende il nome dalle tracce di pittura murale. Lo storico motivo decorativo di Fresco Wall riproduce perfettamente il gioco lucido/opaco, tuttora visibile sui muri di Venezia.

100%Fabric on nonwoven Wallcovering



Colours 3
Width 135cm - 53"
Horizontal Repeat 67.5cm - 26.5"
Vertical Repeat 104cm - 41"



Full Width Repeat



23051 1 Calce




23051 3 Madreperla





23051 4 Grigio

Legenda


* These images show the product in original size.
Other images show approximately a 25cm (10") cut of the product.

 Articolo antimacchia
Soil repellent treatment


 Articolo ignifugo
Flame retardant fabric


 Tessuto indoor / outdoor
Indoor / outdoor fabric


 Certificato IMO
IMO Certification


 Filati ecosostenibili
Eco-sustainable yarns


 Riciclabile
Recyclable

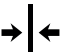
 Tessuto con filati antibatterici
Fabric with antibacterial yarns

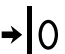
 Tessuto fonoassorbente
Sound absorbing fabric


 Incollare la parete
Paste the wall

 Staccabile a secco
Strippable

 Teli sovrapposti tagliati
Cut overlapping sheets

 Raccordo allineato
Straight match

 Raccordo libero
Free match

 Buona solidità dei colori alla luce
Good light fastness



RUBELLI.COM



DIGITAL VERSION OF
THIS CATALOGUE
<https://r.rubelli.com/ruc2023>

Grafiche Antiga spa



Any reproduction, representation
or modification, in full or party,
is expressly prohibited.
@Rubelli Marketing 2023
– All rights reserved



FRAMMENTI VENEZIANI

FRAMMENTI VE



RUBELLI.COM



NEZIANI 2023

FRAMMENTI VENEZIANI 2023