

COMPANY

**PRO
FILE**

 intra lighting

OUR PHILOSOPHY

Light brings life.

Spaces where everything feels right, have their reason behind. Every single day we search for new and better, future-proof and sustainable lighting solutions for living spaces, to create light that enhances well-being and makes people feel good.

Come with us. Bring your ideas to life.

Icarus performance, 2022, MN Dance Company
Photography: Aljoša Kravanja

We care. For people and for the planet.

We have always been ahead of time. We lived and acted sustainably before sustainability became synonymous with responsible behaviour towards the environment and people. Concern about what kind of world we will leave to our children has always been present in everything we do. We were not guided by regulations; we were guided by conscience and consciousness.

Our initiatives

100% **green energy*** 2.000+ **trees planted** 1.000h^{nl} **rainwater harvesting for watering green areas**



We contributed for the purchase of 2023 seedlings for Kras, we will donate 1500 hours of our work in a renovation action and will support the project long-term.



We have our own solar power plant and a heat pump. Renewable energy source for electricity: 100% by 2025.



We support culture, sports, health and social initiatives in our local community.



We breath new life in old degraded buildings. We reuse a lot of the construction materials from the demolition work.



We are surrounded by green areas. We planted 60 fruit and leaf trees of local varieties and more than 1000 plants.

KEY AREAS WE WILL FOCUS ON

01

PRODUCTS

Circular and human-friendly products

- Products supporting people's well-being
- Responsible use of materials
- Material and data transparency
- Energy-efficient products
- Repairability, prolonging products life
- Design for disassembly
- High recyclability

02

SOLUTIONS

Healthy living and improved well-being with light

- Human-centric lighting solutions
- Supporting health, positive feelings and motivation
- All-in-one acoustics solutions
- Smart use of artificial and natural light
- Connection with different LMS systems

03


COMPANY


Sustainable and ethical company


- Becoming a net zero company
- High ethical standards
- Environmental-friendly production
- Responsible supplier choice
- A caring employer
- Care for local community

Present globally connected locally

Our company, established in 1989, is a global provider of smart lighting solutions. We are present worldwide but always closely connected to the local environment. As one of the most important players in the lighting market, we strive to contribute to the world's well-being. We work closely with architects, lighting designers, engineers and interior designers around the globe to co-create engaging lighting solutions and foremost vibrant spaces.

 **Headquarters**
Slovenia, Šempeter pri Gorici

 **Offices**
Croatia - Zagreb
Italy - Milan
Netherlands - Leerdam
Serbia - Belgrade
Slovenia - Ljubljana
UAE - Dubai
USA - Pennsylvania, Treviso

 **Production plants**
Slovenia, Šempeter pri Gorici
Croatia, Čazma
Serbia, Donji Milanovac
USA, Pennsylvania, Treviso

 **Presence**

400+

employees

68

countries

35

years of experience

37,6

mio EUR turnover in 2022



Quality in every detail

Our products are thoughtfully designed, manufactured and tested in order to ensure reliable operation throughout their life span, strongly limit the environmental impact and co-create pleasant living conditions. Quality is one of our highest priorities and a way of life.



PRODUCTION

State of the art production

Made in Europe

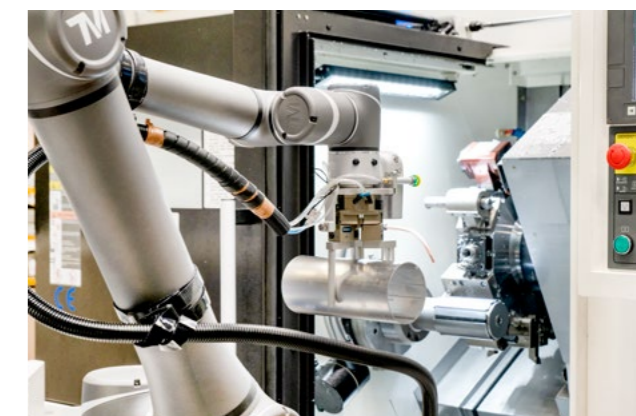
With a new production process, we have reduced energy consumption, raw materials, natural resources and waste. We introduced an automated vertical storage system, a modern powder coating system and an automated guided vehicle for flexible internal logistics.

7 24 ISO

year warranty thousand m² certified productions



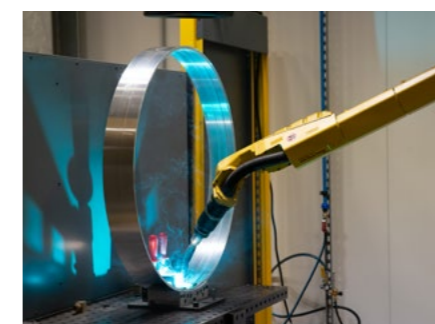
Automated guided vehicle for flexible internal logistics



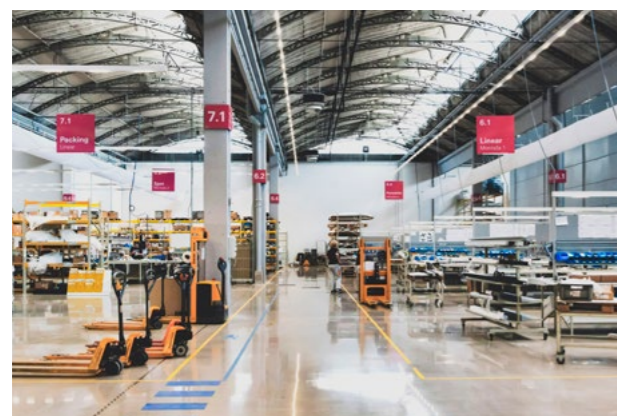
Turn-mill centre with collaborative robot



Automated vertical storage system



Robotic Welding Systems



Safe and comfortable working environment



Modern solvent-free powder coating system with low water and energy consumption, pre-treatment tunnel with passivation (corrosion protection), and automated powder application with a recovery system.

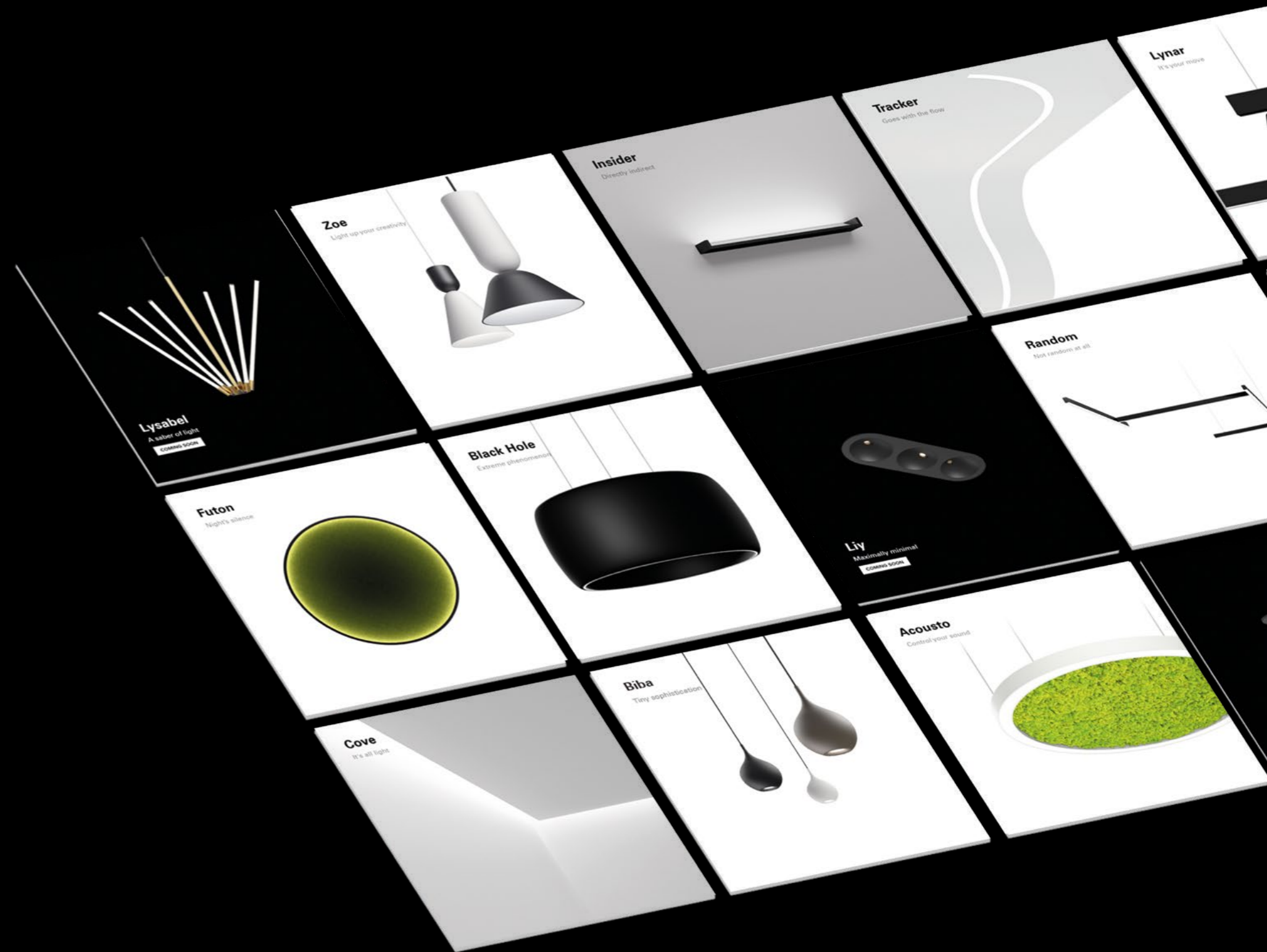


All the products are 100% tested in our own lab, one of the biggest in Europe.

Select your fellow players

Creating a space is like telling a story.

Each detail contributes to the whole picture. Even unnoticed, our luminaries play a significant role. Changing the perception, ruling the atmosphere. Pure design and simplicity make them discreet, yet effective. Smart fellow players you can always rely on.



Biba

Tiny sophistication



d = 75 – 79 mm

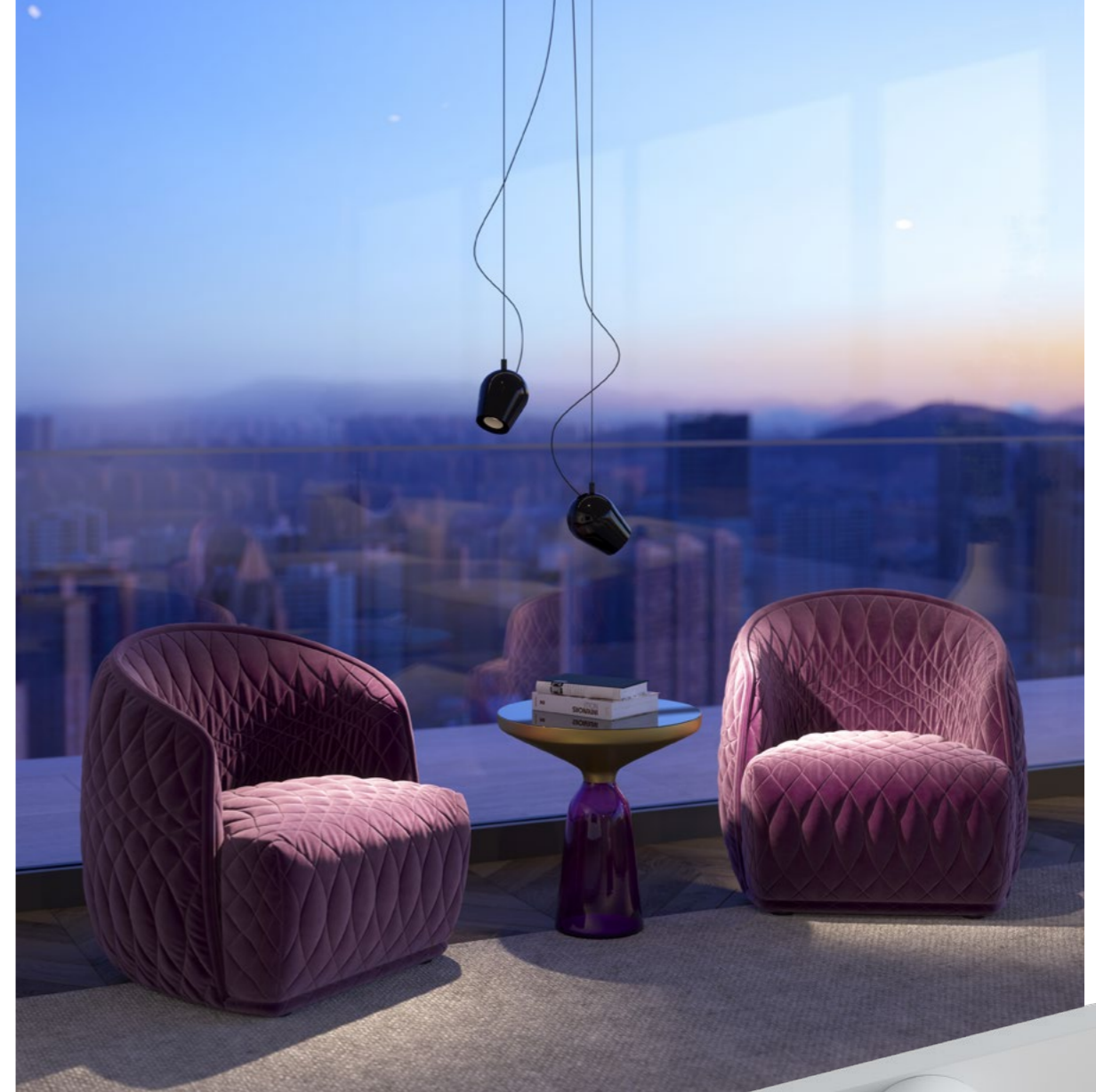
Everybody loves Biba. Individually or in a matching composition, sophistication is the look you get. Think about Biba if you're planning an elegant restaurant, minimalistic hotel lobby, Scandinavian-inspired bar, urban retail experience or even your home dining room and let it

suit your taste. Combine shapes and colours in an endless fusion of possibilities, which will lead you from simple and sophisticated, to a luminaire composition that really lets your ideas fly.



intra-lighting/#biba

Piazza Becco, Arandelovac, Srbija / Architecture: AteljeAL, Beograd / Photography: Miroš Martinović



Private residence / Interior design: Notio / Visualization: Vividforge

Pixy

Authentically magnetic



d = 123 mm

Move your table. Pixy will follow. Pixy is never fixed. It is always flexible. Which makes it the perfect choice for restaurants and bars where moving tables is a daily routine. With a small carbon rod and a magnet, you can

instantly move and redirect the light without using the ladder. We think that Pixy is nicer when grouped. Combine composition over and over again.

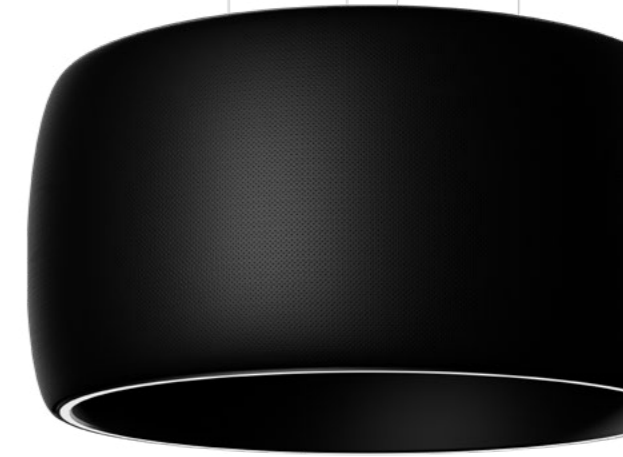
intra-lighting/#pixy



Fabiani Business Hotel, Vienna, Austria / Architecture: AKSL arhitekti / Visualization: Studio Spacer

Black Hole

Extreme phenomenon



d = 840 mm

Its perfection absorbs you. This is a story of how the light found the way out of the black hole to enlighten your space. Black Hole is a perfect luminaire for all your galaxies – home, office, hospitality. Because of its size and distinct look it has absolutely no chance to stay invisible. It is multi-functional. It offers different possibilities of illumination. The acoustic surface reduces noise and improves speech

audibility. With its integrated Bluetooth loudspeaker, you can listen to your favorite music, and its sophisticated design brings a touch of luxury to your space. Last but not least, the atmosphere it creates might help you find the way out whenever you feel stuck in a black hole.



intra-lighting/#blackhole

Dawn

Morning light



d = 616 – 1062 mm

Turning dark to dawn one light at a time. Dawn is the perfect luminaire for all romantics who love soft early morning light. Unlike other luminaires which have their light source located in the center, Dawn hides its source behind the edge and only reveals soft uniform illumination, comparable to the morning dawn. Dawn boasts elegant

details such as a single piece frame, delicate edge design and 100% clean interior, with no visible elements. It's a luminaire that pays attention to the details by turning a power cable to an eye-catching element and it's a perfect example of how to elevate a standard decorative product to a unique lighting experience.

Futon

Circles of light



d = 611 - 1216 mm

Acoustic. Mirror. O. Three versions of thin elegance.

Futon comes in three versions. All different all unique all multipurpose. Futon Acoustic is perfect when you want to combine unique ambient lighting, functionality of acoustics and trendy colours. Futon O, a shining ring, makes your

walls shine in a different way, while Futon Mirror is a mirror and a lamp all-in-one. Alone or in a creative composition, Futon gives its best.

intra-lighting/#futon



Daste Bistrò, Bergamo, Italy / Architecture: Okam Studio and Daniele Fazio Studio / Photography: Luca Argenton



Bathroom / Visualisation: Studio Spacer

d (round) = 611 - 899 mm
h (oval) = 896 - 1217 mm
h (rectangular) = 906 - 1506 mm

Futon Mirror

All visible



Discover your most beautiful face. Minimalistic bathroom design calls for an all-in-one product like Futon Mirror. This is a mirror and a lamp all-in-one. The lateral light will illuminate your face and clothes in the best way without

any shadows or color deviations. It has an integrated heater to prevent the mirror surface from condensing steam.



Apartment PK / Architecture: AKSL arhitekti

Rynk NEW

A light ring



w = 14 mm

Simple but efficient circle of light. Rynk is a continuous circle of light, a round-shaped luminaire available in three different diameters and many trendy colours. It is simple but efficient for its looks and its illumination.

With its possibility of indirect illumination it creates cosiness, lights up ceilings and improves visual comfort. Due to its thinner elegant profile it fits in all kind of interiors – from home to office, retail and hospitality.

Lysabel NEW

A saber of light



d = 1265, 1748 mm

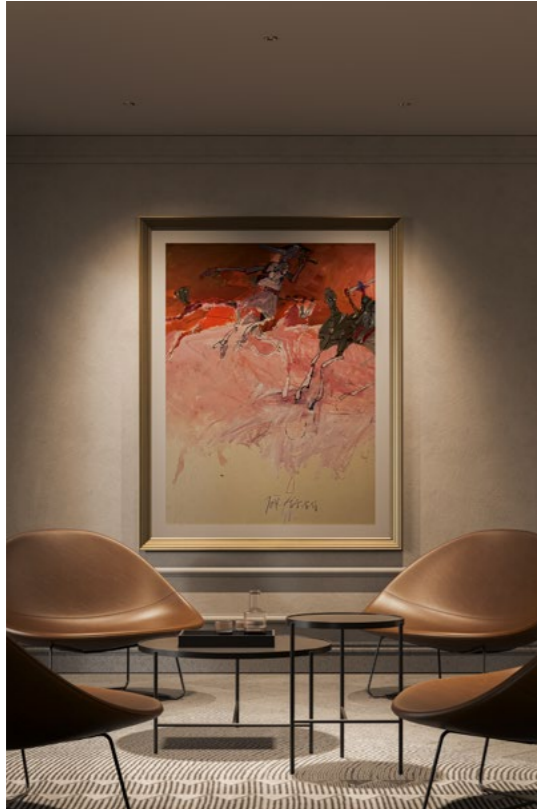
Finally, you can have the lightsaber you always wanted. Lysabel will always bring a touch of sophistication to your space, whether vertical, horizontal, inclined, single or grouped in different creative compositions. It is a slender homogeneously lit tube without shadows. Its look is clean,

minimalistic and refined, with every last detail carefully crafted. Looks fragile, but it's not. Its force is versatile – for the power of light and of appearance.

Fabiani Business Hotel, Vienna, Austria / Architecture: AKSL arhitekti / Visualization: Studio Spacer



intra-lighting/#lysabel



Liy NEW

Maximally minimal



w = 54 – 80 mm

Pure light effect. Liy is perfect for elegant spaces where you just can't have an ordinary spot. Its main advantage is the appearance of pure light without any source glare. It is minimalistic. Imagine, the opening on the bottom of the funnel is only 8 mm wide. Then, it depends on the housing colour whether you want the whole luminaire to stand out or to completely blend in. Liy can perform as a single spot, in a pair, or in a row of three, four or more. It can be fixed or flexible, allowing to change the beam angle and orientation, always having visual attention on the object.

Conic NEW

An iconic spot



d = 81 – 88 mm



No need to putty at all. When you want a spot on a higher level, choose Conic. It's distinguished by prestigious finishes, wide range of colours and clean looks. Most of

all, Conic stands out for its innovative, easy and clean installation in a finished plaster ceilings, with tools of standard sizes and no puttying.



Pipes R

Totally responsive

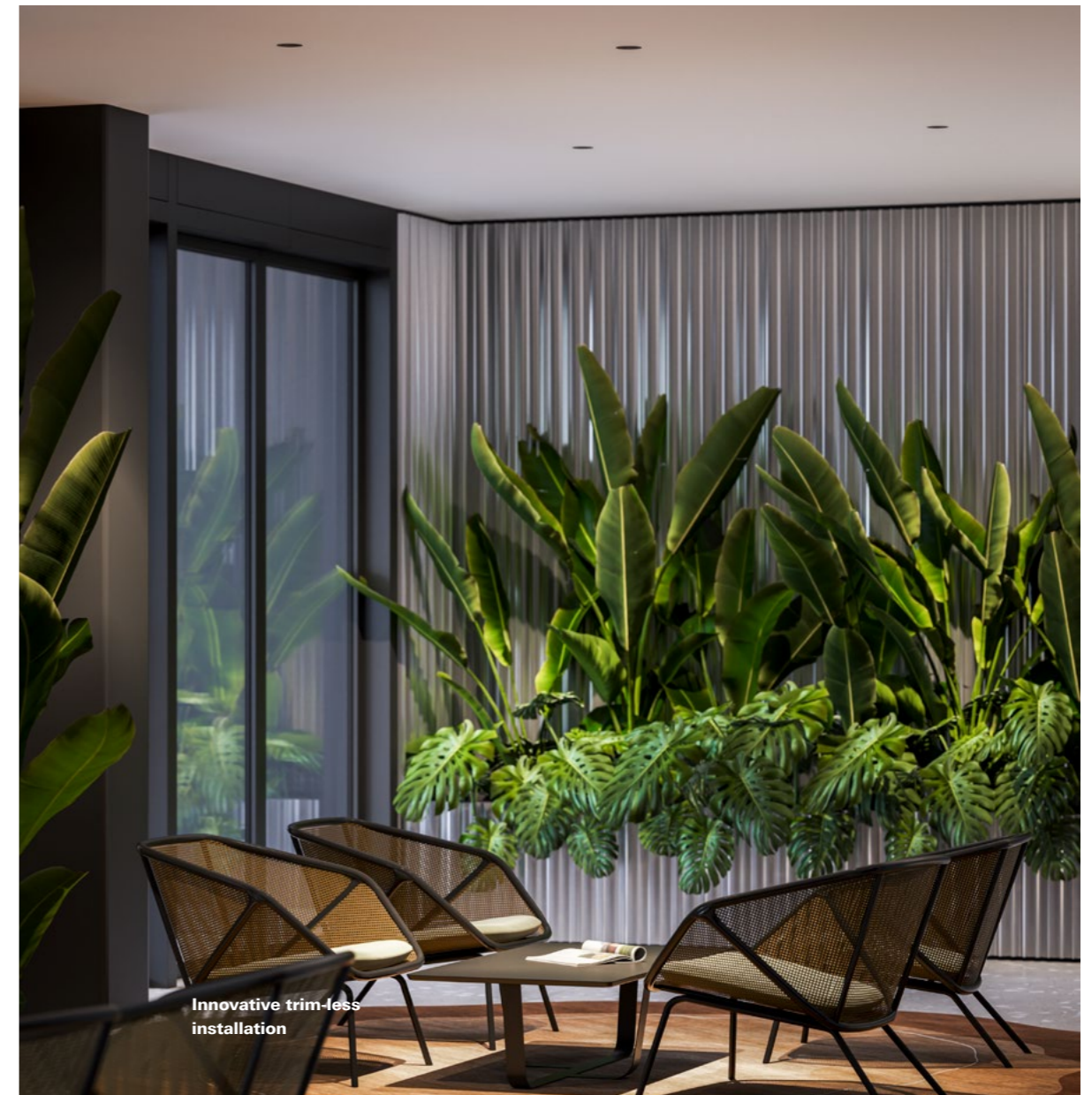
Focus as a matter of choice. A range of recessed LED spots brings efficiency and customization together. With a wide choice of colour combinations, power options and sizes, Pipes R is a spot that can blend in discretely or become an eye catching element in the space. The concept of »Less is more« went beyond the design itself or the way a space is used. Each and every product component has been optimized to make the Pipes R highly efficient and affordable.

d = 60 – 140 mm



NautaDutilh, Amsterdam. The Netherlands / Arch.: Casper Schwarz / Photo.: Peter Baas; Gerke van de Hoef

Feel Good Hotel, Valencia, Spain / Interior design: AKSL arhitekti / Visualisation: Studio Spacer



Innovative trim-less installation

intra-lighting/#conic

Eye NEW

Good looking all around



d = 60 – 81 mm

Don't roll your eyes, roll your Eye. There are really a lot of spots out there, but Eye is not just »one more spot«. Come closer. All the details are carefully thought out. Its

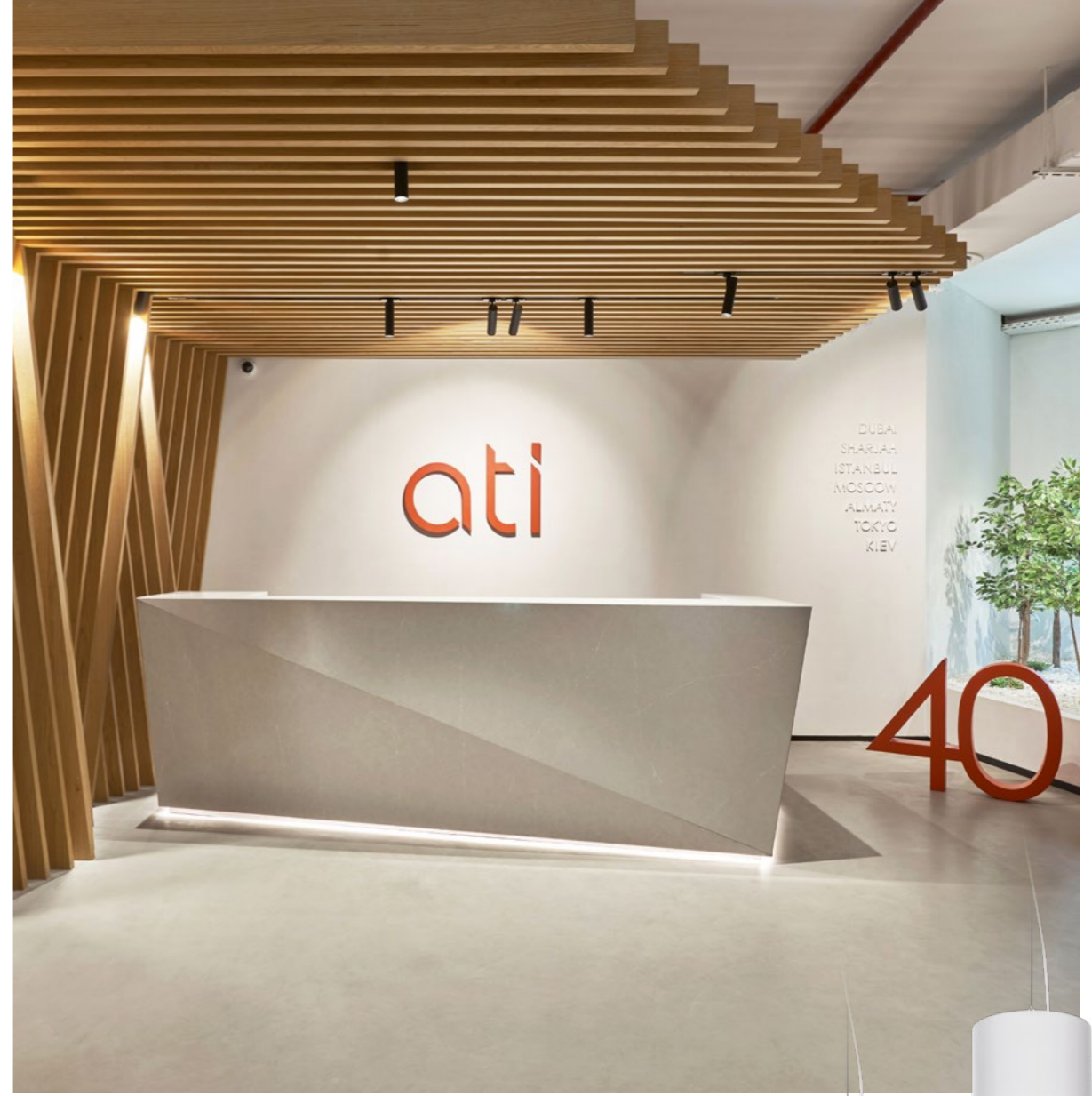
clean elegant look with the possibility of a 360-degree orientation makes it a perfect luminaire for hospitality, retail and private residences.

intra-lighting/#eye



Feel Good Hotel, Valencia, Spain / Interior design: AKSL arhitekti / Visualisation: Studio Spacer

ATI Offices, Dubai, UAE / Architecture: ATI Consultants / Lighting design: Scientechnic / Photography: Chris Goldstraw



Pipes

Simple outside, clever inside



d = 45 – 133 mm

Its innovative design makes it irresistible. The simple shape is neutral and widely generic to fit easily anywhere. Thanks to variety of applications, an uncompromising performance and high efficiency, it has the power to point the attention and to create a special atmosphere in a space.

The front of the fixture is what makes it unique and different. To achieve high visual comfort the reflector is inwardly recessed, while the funnel acts as a transition zone to minimize the contrast.

intra-lighting/#pipes



d = 17 mm

Gramm

NEW

The lightest light

Feather lightness in the space. Gramm is elegant and focused, meant to enlighten only what is needed. It is round-shaped, and its main feature is the possibility of rotation which allows a lot of flexibility. When you want a pleasant indirect light, you simply rotate it up with one move. A name, a guarantee. Gramm will always bring a feeling of feather lightness to the space. Because Gramm is light, period.

Skyler

The sky is the limit

h = 20 mm



Great design is transparent. Forget about boring office lights that reveal everything within one look! Here's Skyler and it's here to surprise! The first thing to wow is its see-through diffuser; invisible when the light is OFF, creating high visual comfort when the light is ON. And that's not the only thing that's beautiful. With its black and white frame colour combination and thinness, it's a true designer's

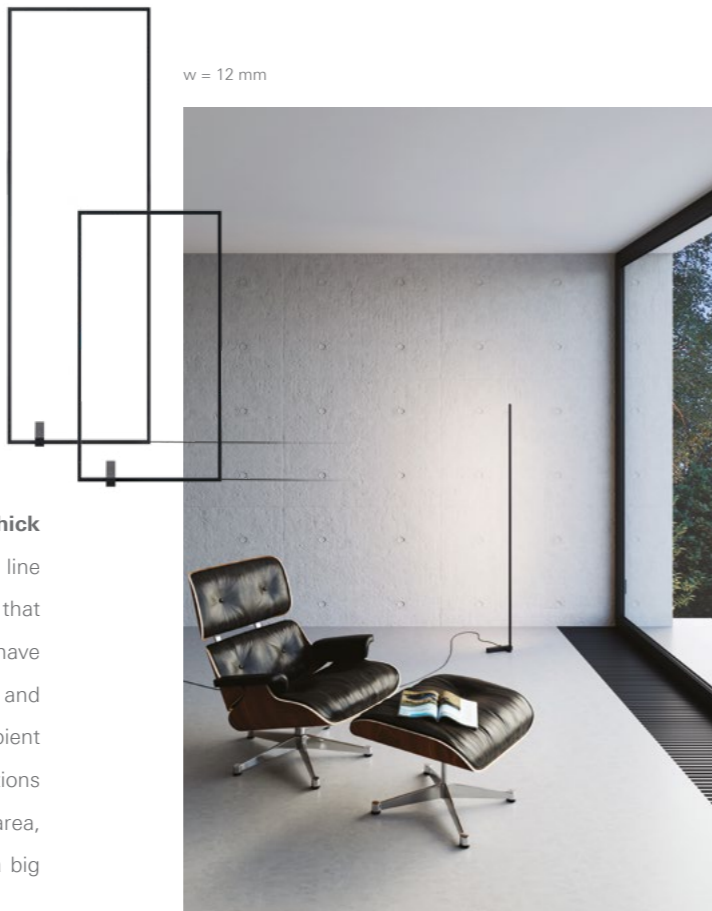
piece, light years away from common office lighting solutions. Skyler boasts the perfect combination of indirect and direct lighting, not only creating a feeling of spaciousness but also providing high-quality task illumination without any glare. Its additional options are an RGB or tunable white ambient illumination.

Vitka

Thin line

Vitka doesn't need to hang out next to thick luminaries just to look thin. They say it's a thin line between elegance and confidence, but we say that there doesn't need to be any line at all, you can have this all together. Thanks to its application flexibility and lighting control, Vitka is one of our top notch ambient luminaries. Discover the variety of Vitka's applications when you're creating an office, reception area, hospitality facilities or at home, and prepare for a big surprise from such a small luminaire.

w = 12 mm



Private residence / Visualisation: Render Atelier

Private office / Visualisation: DSE Visualisation



intra-lighting/#skylar

Kalis

Absolutely universal

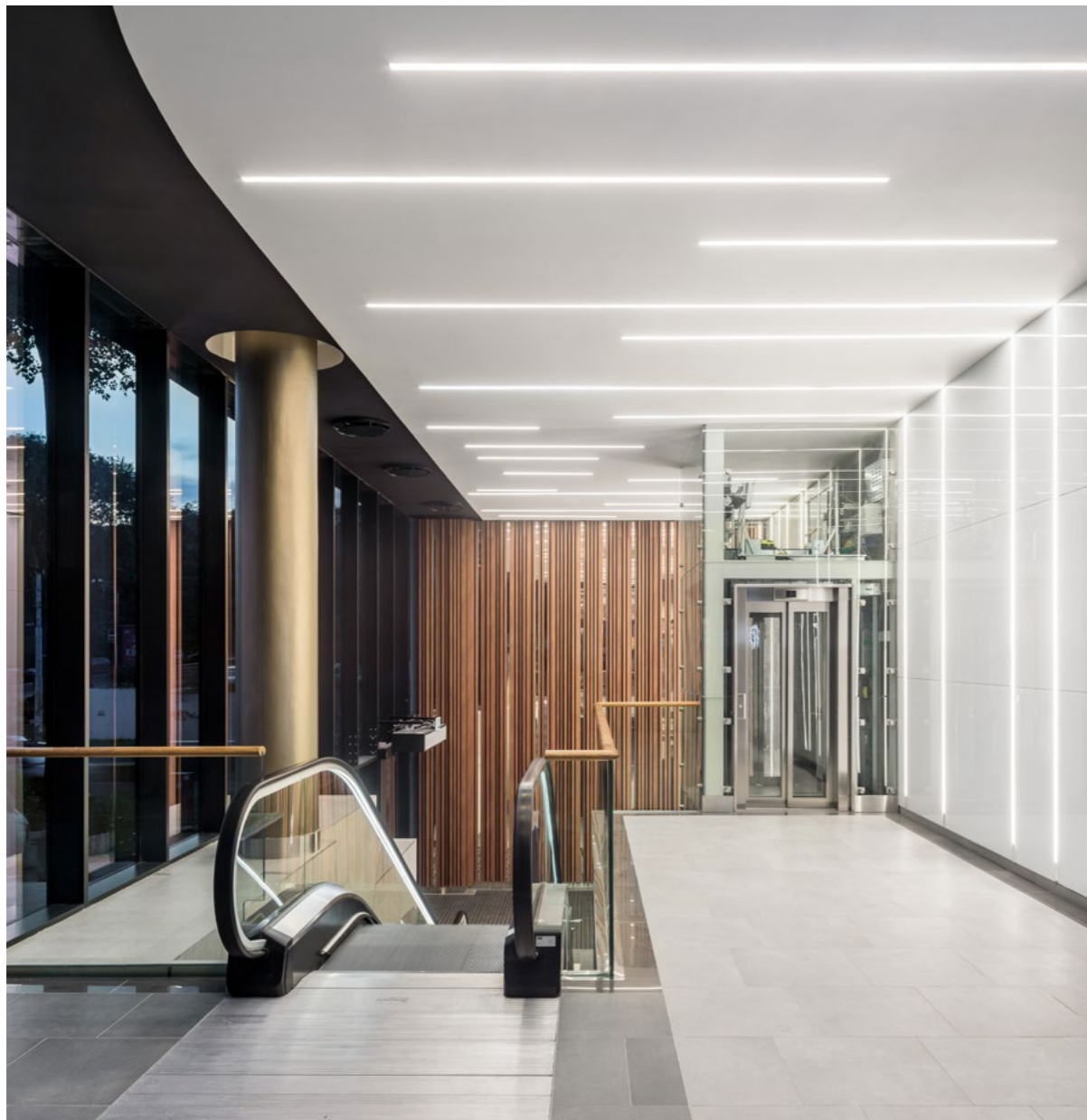


w = 36 – 49 mm

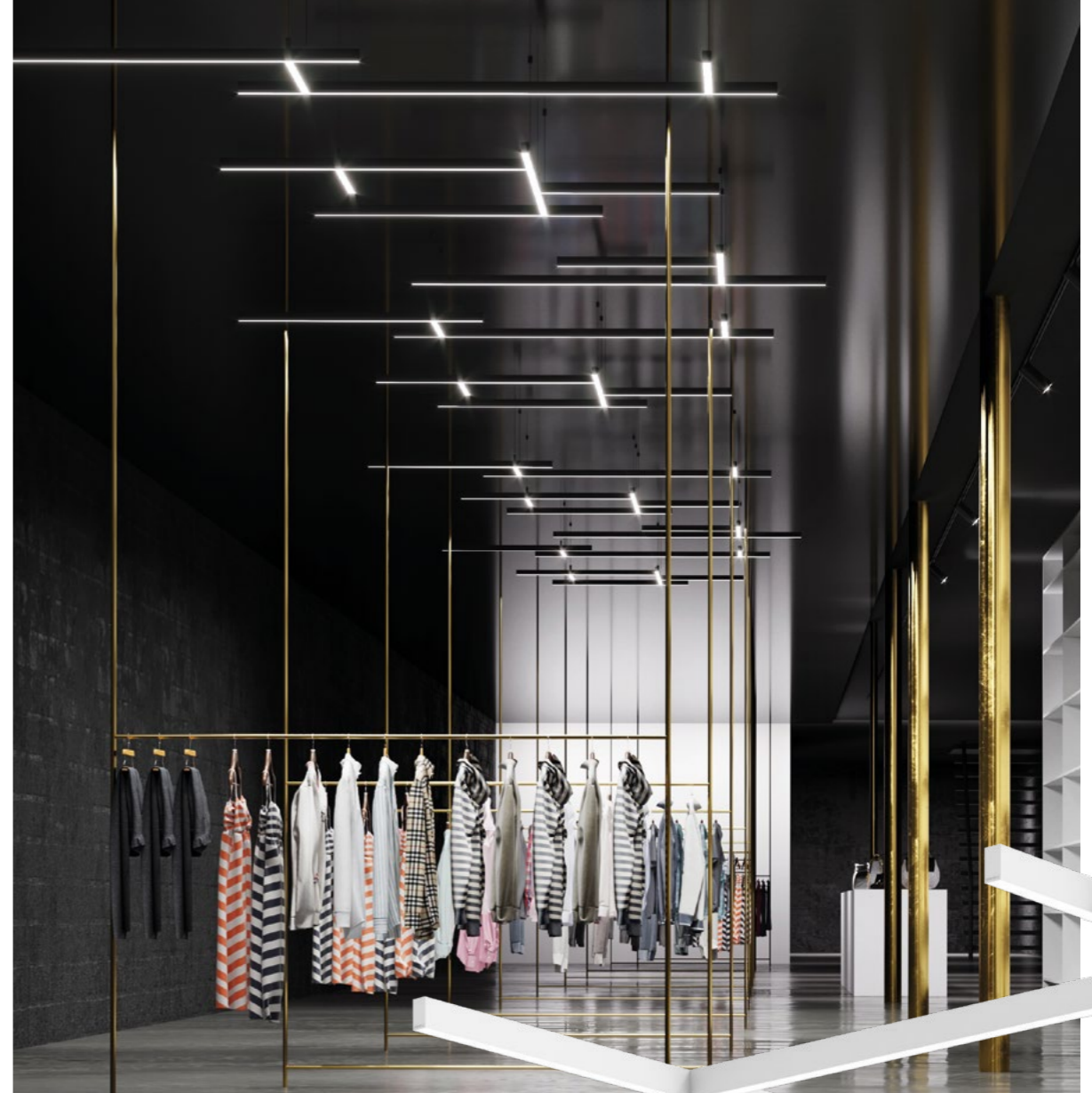
Like a little black dress, for any occasion. Kalis family range is so universal and flexible, that even with repetition of the same product, individuality and originality can be achieved on projects. The basic shape, which allows

the creation of infinite patterns, the ability to match and its carefully designed details give Kalis the potential to become one of your favorites.

intra-lighting/#kalis



BEO shopping centre, Belgrade, Serbia / Architecture: Chapman Taylor, Germany / Photography: Miloš Martinović



Fashion Store / Visualisation: Render Atelier

Random

Not random at all

You're going to love your second ceiling. Random is created to enhance the look of modern open ceilings, turning them into something dynamic! And it all starts with using straight lines and bringing them together into a composition that works best in open spaces that need a secondary ceiling. This luminaire is a perfect fit for retail,

modern offices and even hospitality environments, not only because of its distinctive look, but also because of high-quality general illumination that's an absolute must for every highly efficient environment. And when you get to know it, you will definitely agree that creating a secondary ceiling has never been so elegant.

intra-lighting/#random



B&W law office, Ljubljana, Slovenia / Interior design: AKSL arhitekti / Visualisation: Studio Spacer

Lynar

It's your move

Sweet home for light modules. Lynar is an elegant, endless modular profile that offers maximum flexibility. The choice of modules is wide and the installation is tool-free, simple, fast and safe. Combine them the way you want



w = 40 – 53 mm

and change or move at anytime. It covers a wide range of use - from office, galleries, retail, hospitality to private residences.



Private office, Germany / Visualisation: Studio Spacer

Trix

Uncompromising, no tricks

Number one in price performance. Slimmer, lower, and more convenient, but still has it all. Trix boasts minimalistic design, modularity, high efficiency, and resistance without giving up on its looks. It is born for supermarkets, schools, offices and industrial plants. Long lines are really easy to install. Choose track spotlights when illuminating focus zones or linear optic for uniform illumination; the set of modules is really vast, for any occasion.

w = 36 – 49 mm

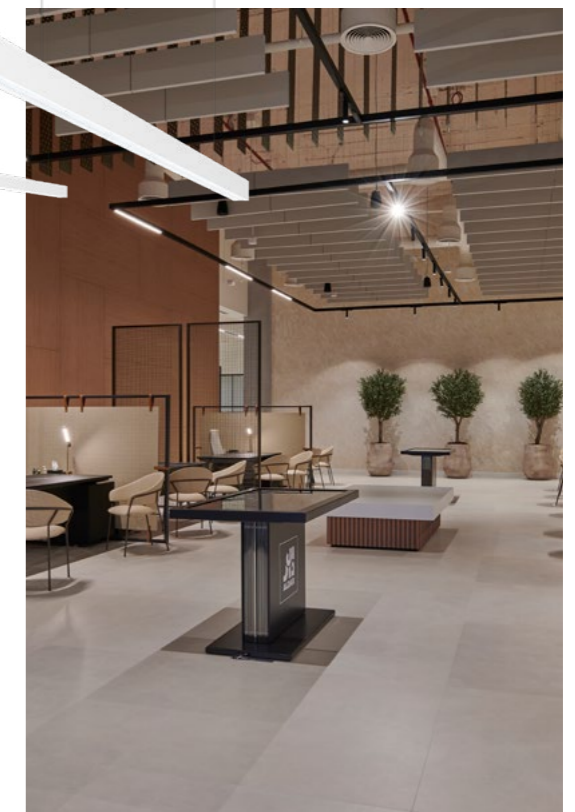
Rylo Pro

NEW

Office first

Your best office buddy. Whether it is suspended, recessed or floor, Rylo Pro is mostly intended for offices – for single ones, open spaces and conference rooms, offering illumination with no glare, high visual comfort and wellbeing. The floor version of Rylo Pro is really practical: no installation needed, just plug-in and start. It is easy to move from one workstation to another.

w = 47 – 60 mm



Aldar HQ, Abu Dhabi, UAE / Interior Design: Mustard & Linen / Photography: Chris Goldstraw



Gyon

More is more



w = 56 – 79 mm

Fully flexible, widely adaptable, all efficient. The possibility of endless lines allows you to go as far as you want. Thanks to the modularity, the luminaire can be designed, as you want it and to go in different directions. This is only the beginning of what you can create with Gyon. Outstanding performance plus bespoke lengths is the perfect recipe for your modular solution, to find the best possible fit and excellent end result. The way you combine the light lines is up to you, as it should be.

d = 615 – 8000 mm



Wave Round

Life is a full circle

If you're not into circles, move on. Challenge your creativity by designing figures of repetition or an original combination of different shapes and sizes. It's an object that seeks attention without taking control over your space.

'Wave Round' may look all glitz and glam, but it also boast with increased efficiency and reduced glare and is as such appropriate for your reception, building entrance or a shopping center.



Mercedes, Bertel O. Steen, Norway / Architecture. Scenario / Photography. Dag Randen

Maze Marketing agency office, Brussels, Belgium / ID: AKSL arhitekti / V: Studio Spacer



h = 88 mm
d (round) = 950, 1350 mm
l (square, rectangular) = 1344, 8744 mm

Acousto

Acoustic comfort

Keeps noise down. In an open workspace, there is nothing more distracting than noises you don't want to hear. But here comes Acousto and it's here to make a change. Acousto is a luminaire that features acoustic panels that provide excellent absorption of sounds, making your area not only quieter, but also more private. Think about Acousto

when creating large and open spaces with a majority of hard surfaces and an echo, or when you're simply seeking a different and green solution. And by saying that, we're thinking about MOSSwall® panels, that not only help absorb the noise but also bring nature indoors and are maintenance free. How cool is that?



w = 56 mm

Private office / Visualisation: Cesma studio

Tracker

Goes with the flow

Created to create. Tracker is made to track the fluid architecture and is by far our most adjustable trim-less luminaire when it comes to shapes. Tracker is the first luminaire to go beyond horizontal movement and introduce endless possibilities to follow vertical lines in the space as well. With its ability to adapt to wall or ceiling radius (+/-500

mm), Tracker can vary from bold and artistic to a luminaire that discreetly blends in and supports the creativity of the architect or lighting designer. And it's not only about its clean looks; it's also about the hidden logic of this luminaire, as it fits perfectly with standard construction elements.

Pyrymyd NEW

Ec(h)o friendly

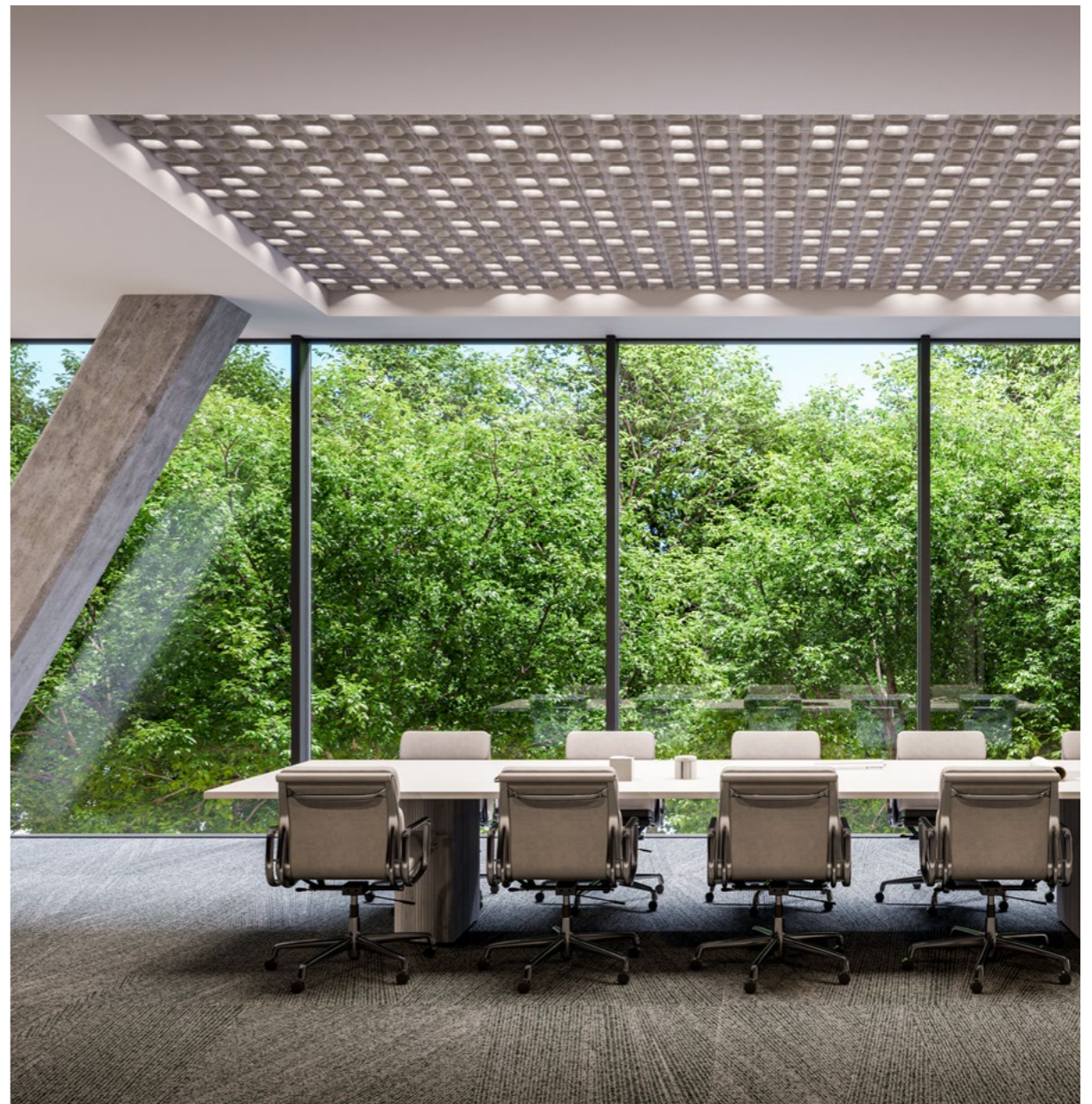


w = 597 mm

No noise. No glare. No pollution. You can finally forget about those unaesthetic acoustic ceilings. Here is Pyrymyd, an advanced all-in-one product, able to create various scenarios and personalized micro ambiances. Therefore, it is a perfect pick for offices and large open

spaces. 3D eco-friendly acoustic panels are made from 100 % recyclable fiber, in order to guarantee an echo friendly acoustic performance. And above all things, it provides efficient homogeneous light distribution.

Meeting room / Visualisation: Studio Spacer



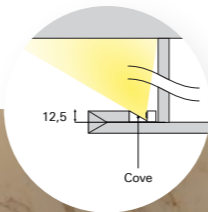
[intra-lighting/#pyrymyd](#)

Cove

It's all light

Feel the light. Give your space the feeling of a light flooding in or put it in under cascades and shelves to light up things that need to be seen. Cove is a light that can be decorative, functional or both at the same time as it always creates a uniform light with an elegant touch. Place it in a

hotel lobby or room and make your guests feel welcome; use it in a closet, under cascades and shelves or blend it with hallway interiors to give your visitors that extra feeling of warmth. Cove will make you see only the light, and not the luminaire.



intra-lighting/#cove

Shop / Visualisation: Render Atelier



Hotel / Visualisation: Render Atelier

Edge

Light graphics

Push your ideas over the edge. Create graphics with light or soften your edges with a luminaire that offers an effect of pure light, without really seeing the product. Edge can be discreetly blended into your ceiling or wall, and at the same time provide uniform and controlled illumination. It comes in dimensions that fit your plaster ceiling like a glove and

focus attention just where it needs to be. It's a luminaire that brings your space to life. Go straight to the Edge if you plan a hotel lobby, corridors or representative spaces to create an atmosphere; use it in pubs, bars and restaurants to elevate the mood or simply light up signalization that cannot be ignored.

intra-lighting/#edge

A feeling for your needs

Ideas are born from love.

Still, it takes a lot more to create a game changer. A form has to match function. Every detail has to be thought out.

We cooperate with many brilliant designers from all over the world to create excellent luminaries and unique lighting experiences. Exceeding the known. Passionate about light.



Mark Elliot



Studio Miklavc



Lars Bylund & Mats Thorén



ALPP Studio



Serge & Robert Cornelissen



Bojan Klančar



Janez Mesaric, Mashoni



Sito



Wilsonic design



Lorenzo Truant

4-10

new products / year

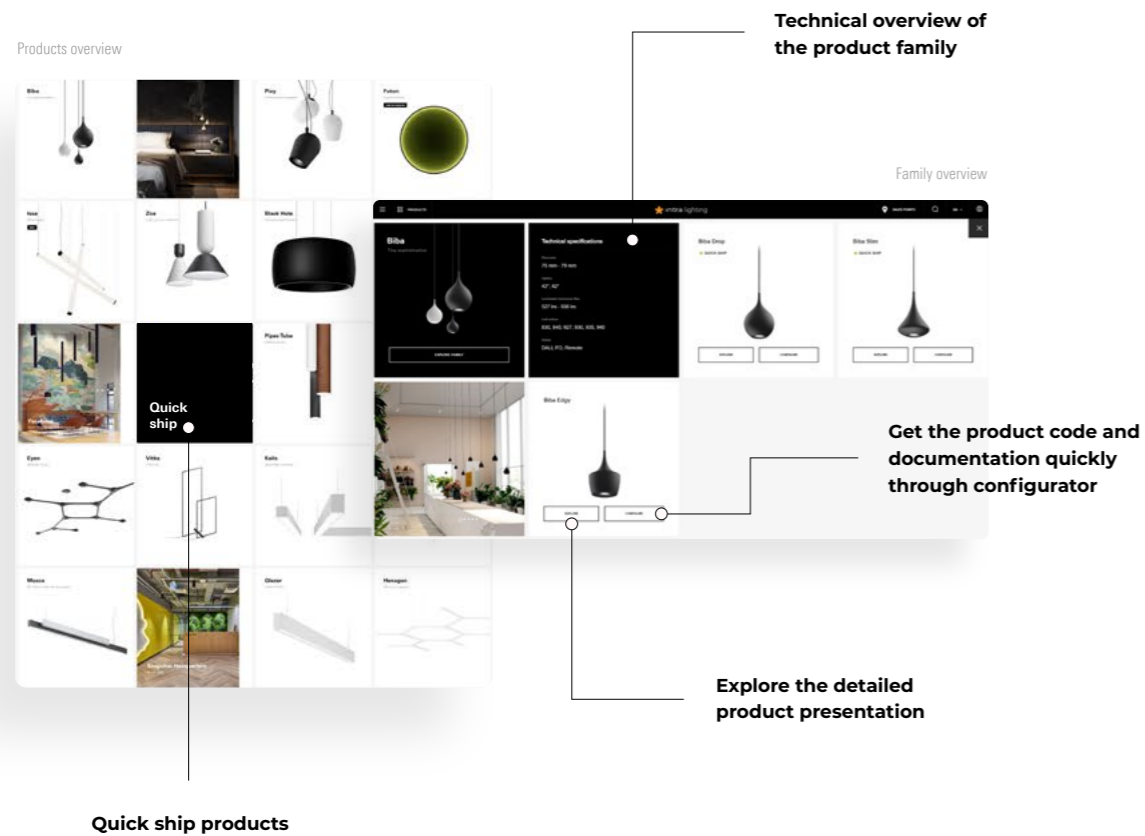
Made to perform and inspire.

Our product families, consistent in their style, are developed to fulfill various lighting needs. Moreover, they stimulate a creative use in a space. Try them and dare to fall in love.

Just a click away

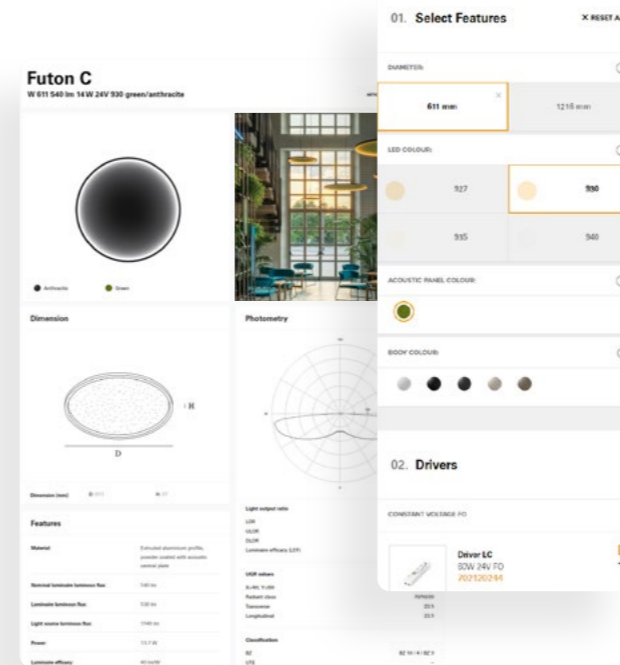
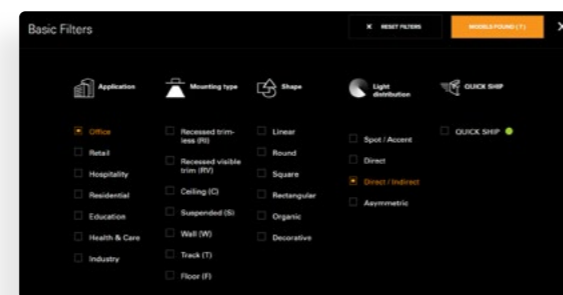
The best online lighting experience

Visit our website to comprehend the portfolio quickly, discover the novelties, and find the product you are looking for. There are different ways to find inspiration for your projects. The user experience is simple, fast and intuitive. Make a click!



Find the product in less than a minute!

There are many ways to find a product. Search visually by family or models. Or technically by filters, defining a specific feature or installation type. There is also a Quick ship filter available.



Intra Configurator

Intra Configurator is an easy, fast and accurate tool, with simple feature selection. Its role is to prevent all the mistakes that could be done while planning. Every product also gets its own **technical card and all the necessary documentation downloads**.

Intra Constructor PRO

Work smarter. Be faster.

There has never been an easier way to design your next lighting system. Intra Constructor PRO enables quick, simple and precise selection of lighting modules that can be personalized to fit best in your interior design. Every design is unique and no piece is forgotten

100%

accurate

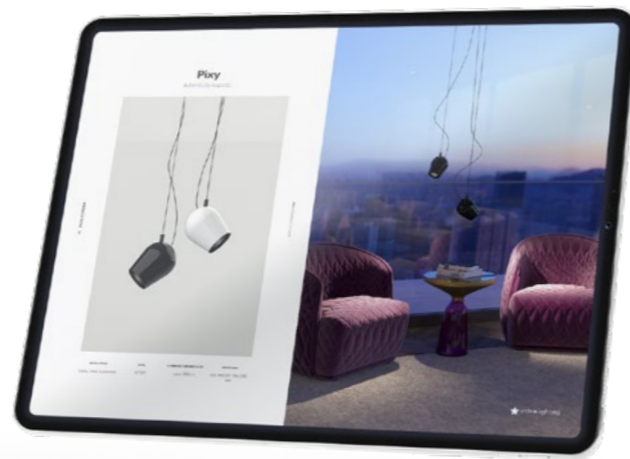
∅

forgotten parts



Interactive product presentations

Get all the product presentations in only one download. Browse through them offline, quickly and easily, the complete portfolio, new products included, is presented.

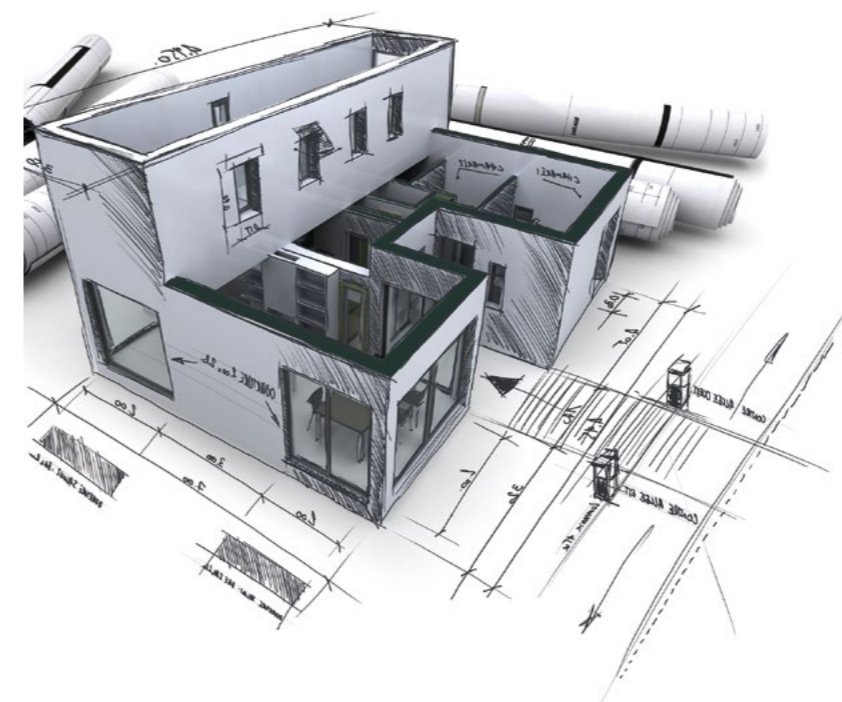


Our lighting guides

Equip yourself with precious knowledge about lighting in different project types and its impact on people's well-being. Our lighting guides are available in interactive PDF, so they'll support your work also offline.

Architecture and design platforms

We are, where you are. Get inspired, create mood boards and explore our products and projects.



Bim

A game changer for the construction industry.

BIM offers an intelligent 3D process to efficiently plan, design and construct throughout the building life cycle, to support and manage your projects easily. A wide range of our products is available in 3D BIM at BIM object library.

Our products are available in the following formats:

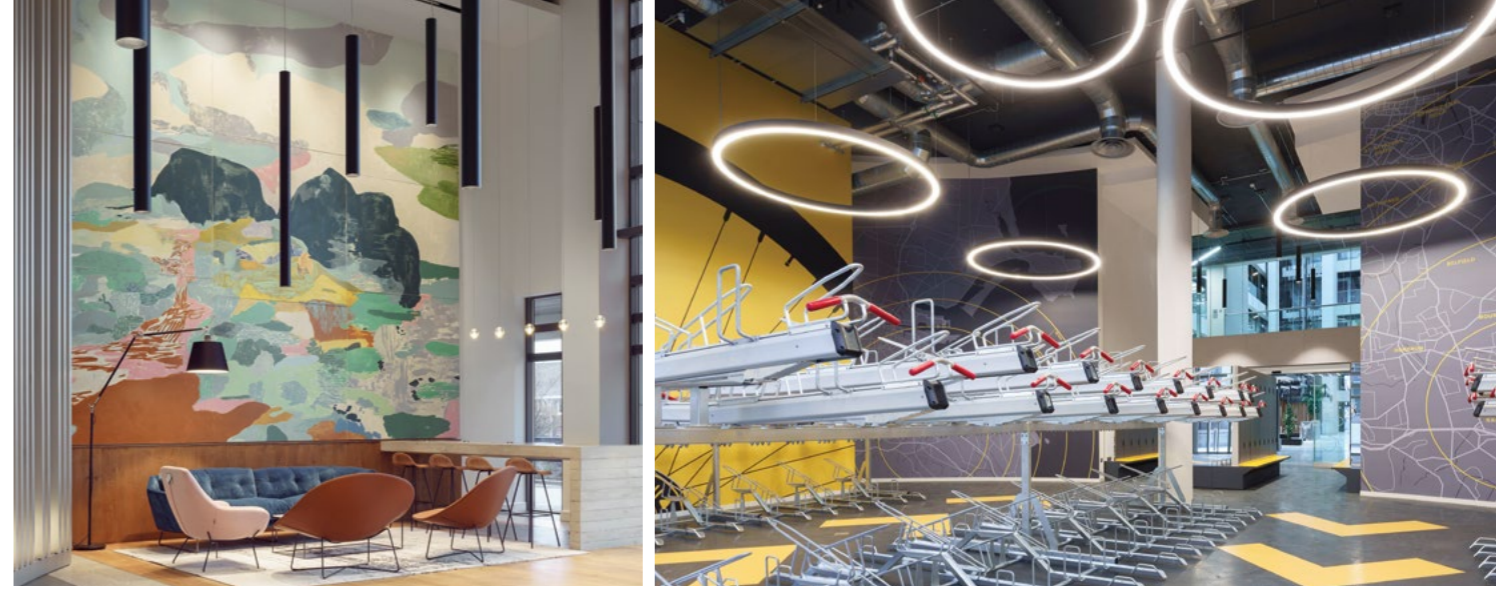


One Microsoft Place

Dublin, Ireland

Architecture: Gensler
 Interior Designer: RKD Architecture
 Photography: Gareth Gardner
 Products: Pipes, Lona

It's a space that promotes development, innovation, and creativity. Each area is decorated differently, carving private microambiences also with the help of lighting. There are thousands of lights spread over open floor-plan, paying special attention to the human-centric approach of employees workflow. 2,000 employees of more than 70 nationalities are brought together under one roof to share their experiences. It's a global community that feels local.



Facebook

**Nova Atria South
 Dublin, Ireland**

Architecture: Plus Architecture
 Photography: Donal Murphy
 Products: Pipes Tube, Kalis, Wave Round

The modern office building, hosting the creative and administrative work behind the social media giant, Facebook expands over nearly 16,000 square meters. The private areas within open space are sectioned by the artwork as well as lighting. The luminaries work both as a supporting feature but blend in enough to not overpower other design elements. Opposite the entrance comes the nearest cycling room with Intra lighting's Wave Rounds, mimicking circular pattern on the Dublin's map.



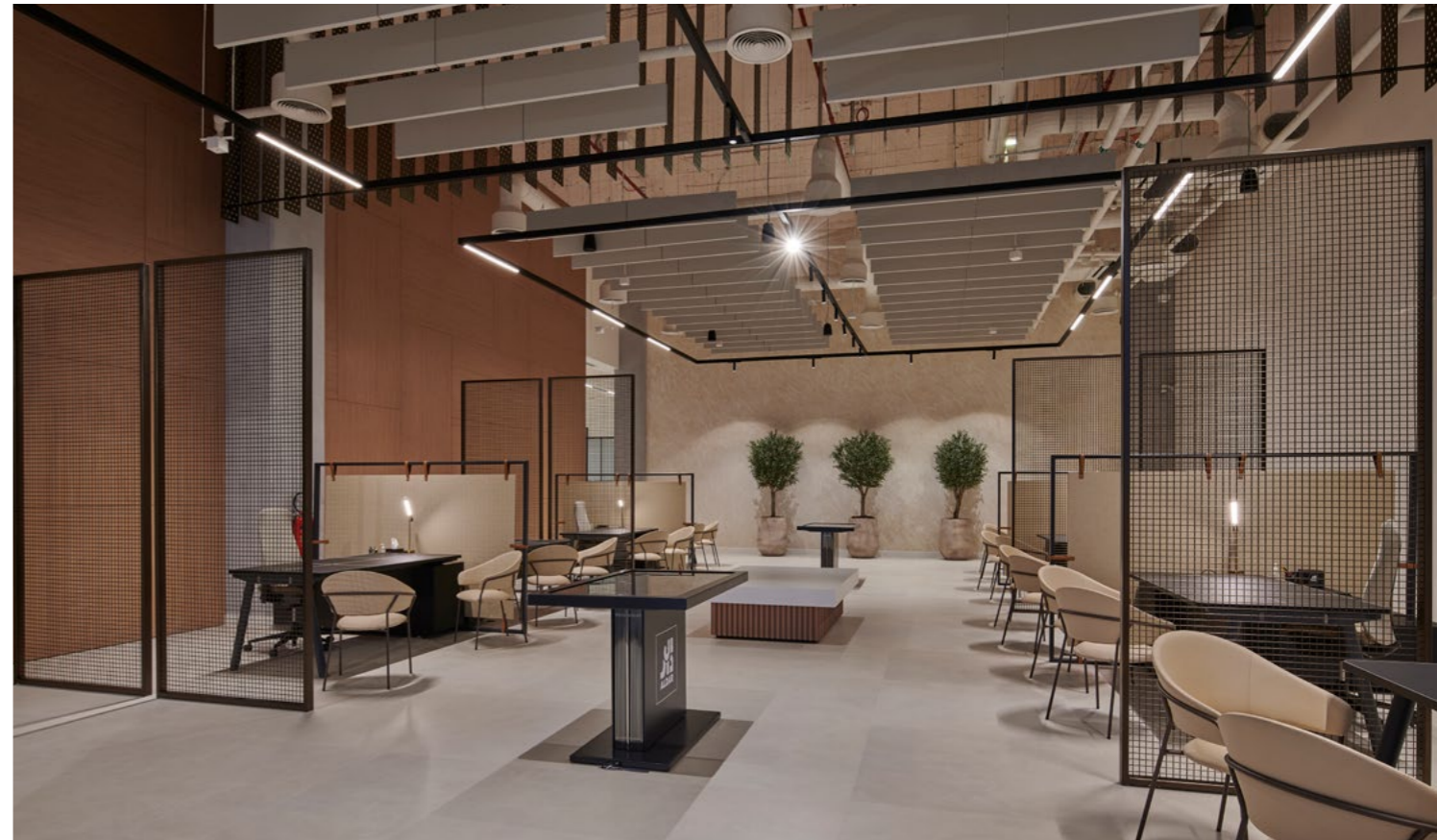
OFFICE

Ferrari

Maranello, Italy

Architecture: Wilmotte & Associés Architectes
Photography: Milene Servelle
Products: Gyon

New Ferrari Sporting Management Center is the melting pot of conceptual designers, developers, researchers, technicians, assembly, communication, and management teams. Lighting, horizontal circulations and the emblematic signature red, have been particularly designed to deliver a unique building tailored to Ferrari. Style, functionality, efficiency and innovation are the main lines of the architectural plan, which aim at improving the workplace conditions and facilitate cohabitation inside the building.



OFFICE

Aldar HQ

Abu Dhabi, UAE

Architecture: Mustard & Linen
Lighting Design: Light Touch PLD, Supply: Acoulite
Photography: Chris Goldstraw
Products: Sequal, Kalis

Aldar's HQ is a space focused on employee well-being. They can work collectively without compromising personal space for focused work.

The lighting efficiently supports different needs and working activities in different areas.

OFFICE

NautaDutilh

Amsterdam, The Netherlands

Architecture: Casper Schwarz Architects
Lighting designer: Studio Rublek
Photography: Peter Baas, Gerke van de Hoef
Products: Pipes R

Nauta Dutilh is a Netherlands based law firm that it's ages away from the usual radiance. It's a place of ultimate balance of representatives, warmth, and artistry, and the same goes for lighting. The light had to fulfill the modern aspect and to create a space where people feel good. And what better way to do it, than with Intra's Pipes?



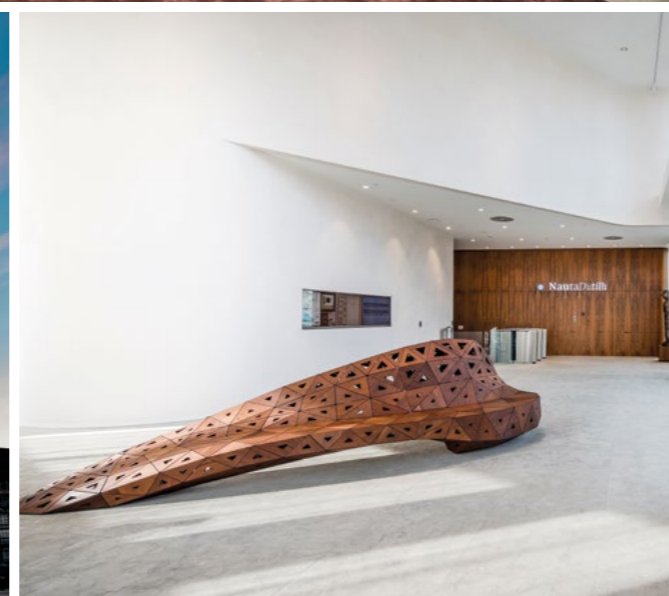
OFFICE

Biosphere

Kiev, Ukraine

Architecture: MONO architects
Photography: Andrey Avdeenko
Products: Hexagon, Kalis

The care and hygiene company wanted to create a comfortable working environment with a modern feel. It's a minimalistic approach to the office space with an emphasis on sustainability, using recycled materials, and sound insulation for enabling privacy. Somewhere the luminaries are simply functional, giving to the space pure light. Also, when gathered in a creative compositions the still don't compromise the clean look of the ambience.



OFFICE

Johnson & Johnson

Dublin, Ireland

Architecture: van Dijk Architects
Photography: Ste Murray
Products: Wave Round, Acousto

Sometimes illumination simply wants to stand out and represent a 'designer piece' for itself. In this case, cohesive clusters of lines, acoustic luminaries, and spot choices create unique patterns giving to the ambience an additional value. The interior design and lighting of the biopharma plant support their aspirations to bring improved eyesight to people globally.



OFFICE

Snapchat

Dubai, UAE

Architecture: Al Tayer Stock
Lighting design: Jaspal Bal, Light Link
Photography: Chris Goldstraw
Products: Wave, Pipes

A big challenge for the lighting designer is giving the client a modern design within budget and offering quality products on time. »With Intra lighting, it was more than possible. We found luminaire Wave was just a perfect pick to realize our idea,« Jaspal Bal explains the choice of the luminaire. The lighting concept reflects the combination of creativity and a real eye for detail.



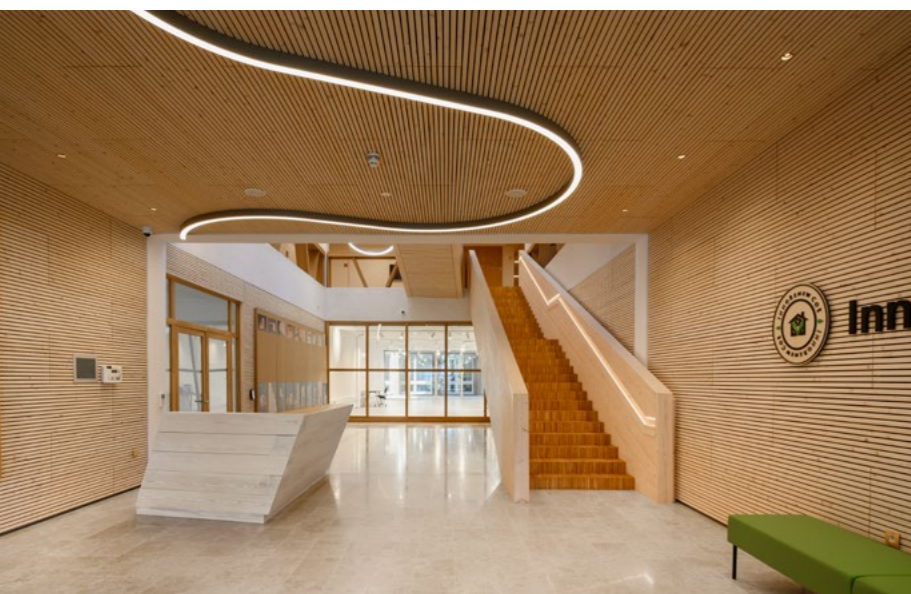
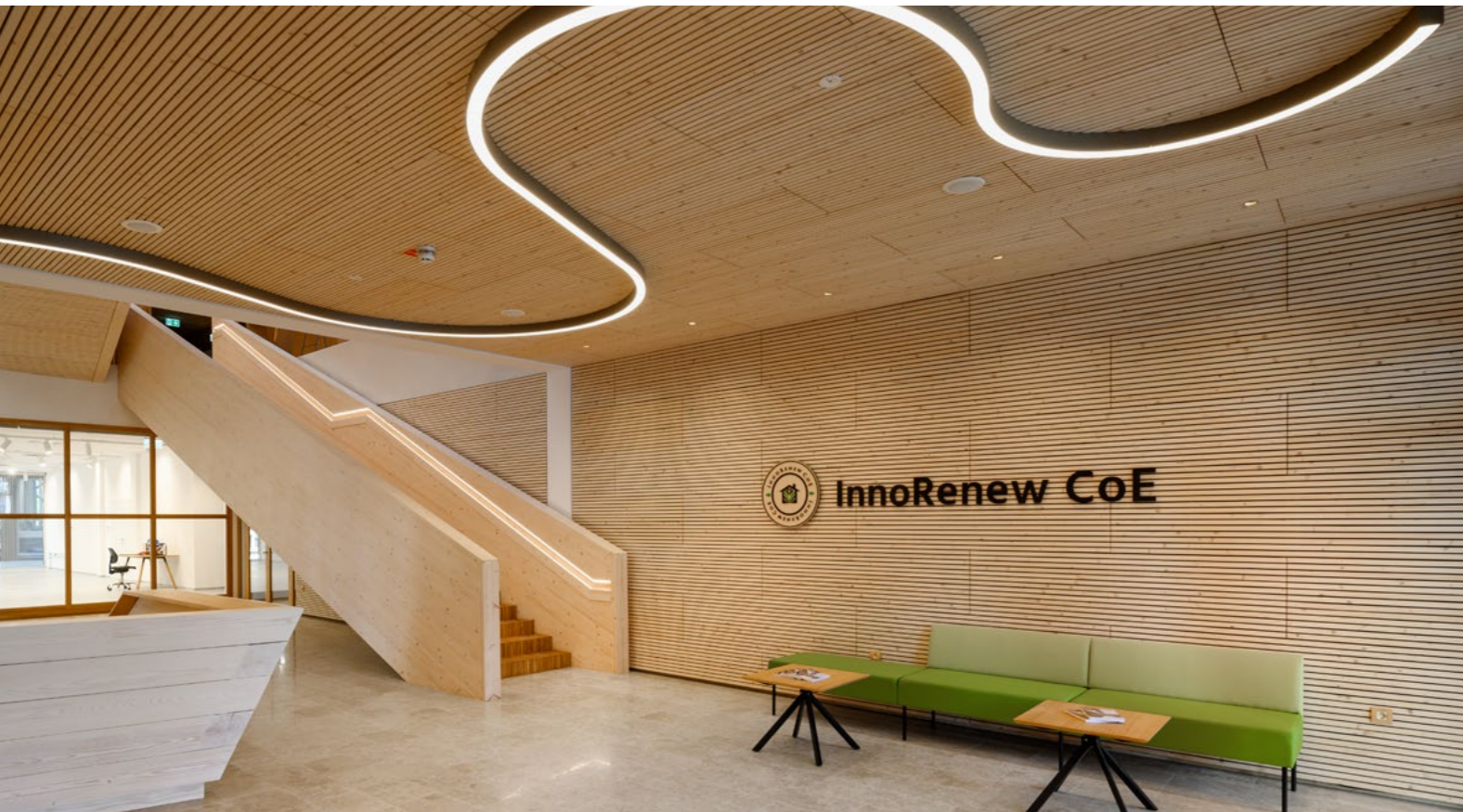
OFFICE

InnoRenew

Izola, Slovenia

Architecture: Eva Prelovšek Niemelä, Aarne Niemelä
Lighting design: Luccio Gobbo
Photography: Miran Kambič
Products: Wave, Demi

InnoRenew is the biggest wooden building in Slovenia. It is carried out following the principles of sustainable development, considering the most modern architectural knowledge. Therefore, the architects chose our luminaries which meet sustainable criteria.



OFFICE

International House Sydney

Sydney, Australia

Architecture: Tzannes
Photography: The Guthrie Project
Products: Gyon

This is the world's tallest timber commercial building, that also got among finalist of 2017 Sustainability Awards. Intra lighting is super proud to participate in the project as green as this one. The lighting follows the nature of the building, as it creates a uniform illumination but also a recognizable lighting pattern that seeks attention when passing by.

Linate Airport

Milan, Italy

Architecture: Gnosis
 Photography: Chiara Del Sordo
 Products: Tracker, Wave

The terminal interior of Linate airport was wholly refurbished to improve customer satisfaction helping navigate passengers through the airport. This was successfully achieved with two of our linear luminaries, Tracker and Wave.

The project fused architectural harmonisation and interior design, implementing a 'green' vision with a particular eye on comfort and finish quality.



BEO shopping centre

Belgrade, Serbia

Architecture: Chapman Taylor, Germany
 Lighting Design: Carla Wilkins, Lichtvision Berlin, Germany
 Photography: Miloš Martinović
 Products: Tracker

An innovative architectural concept, a lot of natural light during the day and lots of greenery create at Beo Shopping Center the feeling of bringing the nature inside. And Tracker perfectly supports this fusion of outdoor and indoor. It is able to adjust to all the forms of the space and follow them endlessly, to create and design almost whatever you have in mind. All to provide consumers with the maximum of shopping experience and relaxation.

RETAIL

Samsonite

Amsterdam, The Netherlands

Architecture: I29 Interior Architects
Lighting Design: Lichtwerkt
Products: Pipes

i29 interior architects were challenged to create a showroom that unites the diversity of the Samsonite Group and its sub-brands. A beautiful project was created, in which our product Pipes proved to be the ideal spot to be applied within the design, but also to focus the light and the customer's attention to the products.



RETAIL

Bertel O. Steen Showroom

Oslo, Norway

Architecture: Scenario Interiorarkitekter
Lighting Design: SML Lighting
Photography: Dag Randen
Products: Wave Round

The car is where the light is. In the prestigious Bertel O. Steen Showroom, the play of light and dark creates a pleasant atmosphere and highlights the car positions.

Due to the glass facade, the entire showroom works as a shop window by night.

Marriott Renaissance Hotel

Warsaw, Poland

Architecture: JEMS Architects
 Photography: Tomek Kowalski
 Products: Pipes

The interior sourced inspiration from Polish art and design of the avant-garde and the industrialization periods. To create a warm, pleasant and relaxed feel and welcome its guests properly, the lighting played an important role. The lighting design includes many glare-less solutions that play with the light-shadow effects. A combination of different colour temperatures and narrow beam optics was used to point the attention and create a unique atmosphere in a space.



Conscious Hotel

Amsterdam, The Netherlands

Architecture: Trabinc Architecture
 Photography: Arjen Veldt
 Products: Pipes

When designing the Conscious Hotel Westpark the approach was to create a warm and cosy ambience, inviting also for locals not only for tourists. Wood, plants, colourful walls, acoustic fabric on its ceiling and focused illumination help all the guests feel comfortable and keep their focus on their wide array of organic foods.

Hotel Milka

Kranjska Gora, Slovenia

Architecture: Gartner arhitekti
Photography: Studio CAPN
Products: Pipes, Biba, Futon Mirror

The entire concept of Milka is to offer a wholesome alpine experience, combining Slovene tradition with modern comfort at the highest level.

Architecture and the interior are complemented with attention to detail, energy efficiency, and high-quality, lasting materials.

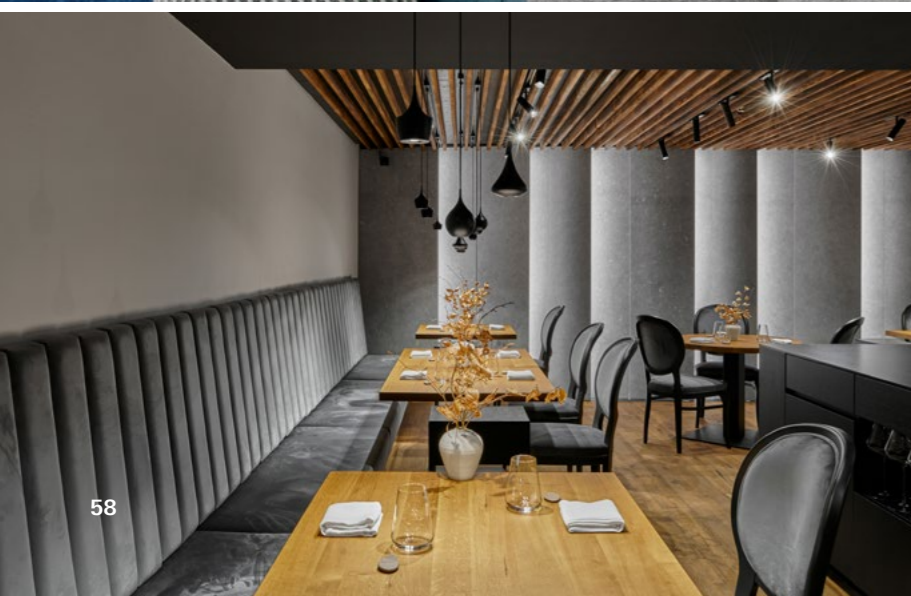


Vinoteka Grad Štanjel

Štanjel, Slovenia

Architecture: Projekt d.d.
Photography: Anže Vrablj
Products: Biba, Wave Round

In the renovation of Štanjel Castle, the old meets the modern. Our products fit nicely into this entanglement of time, which proves that their design is timeless. They provide good general illumination where needed and create an intimate atmosphere at the tables.



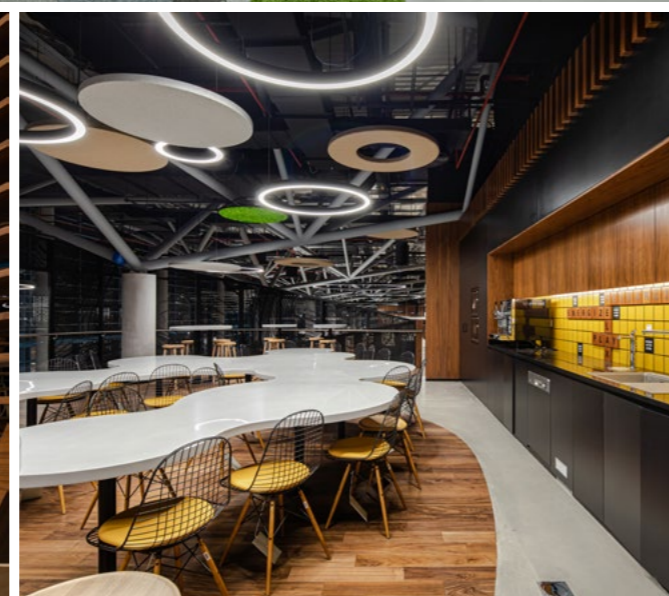
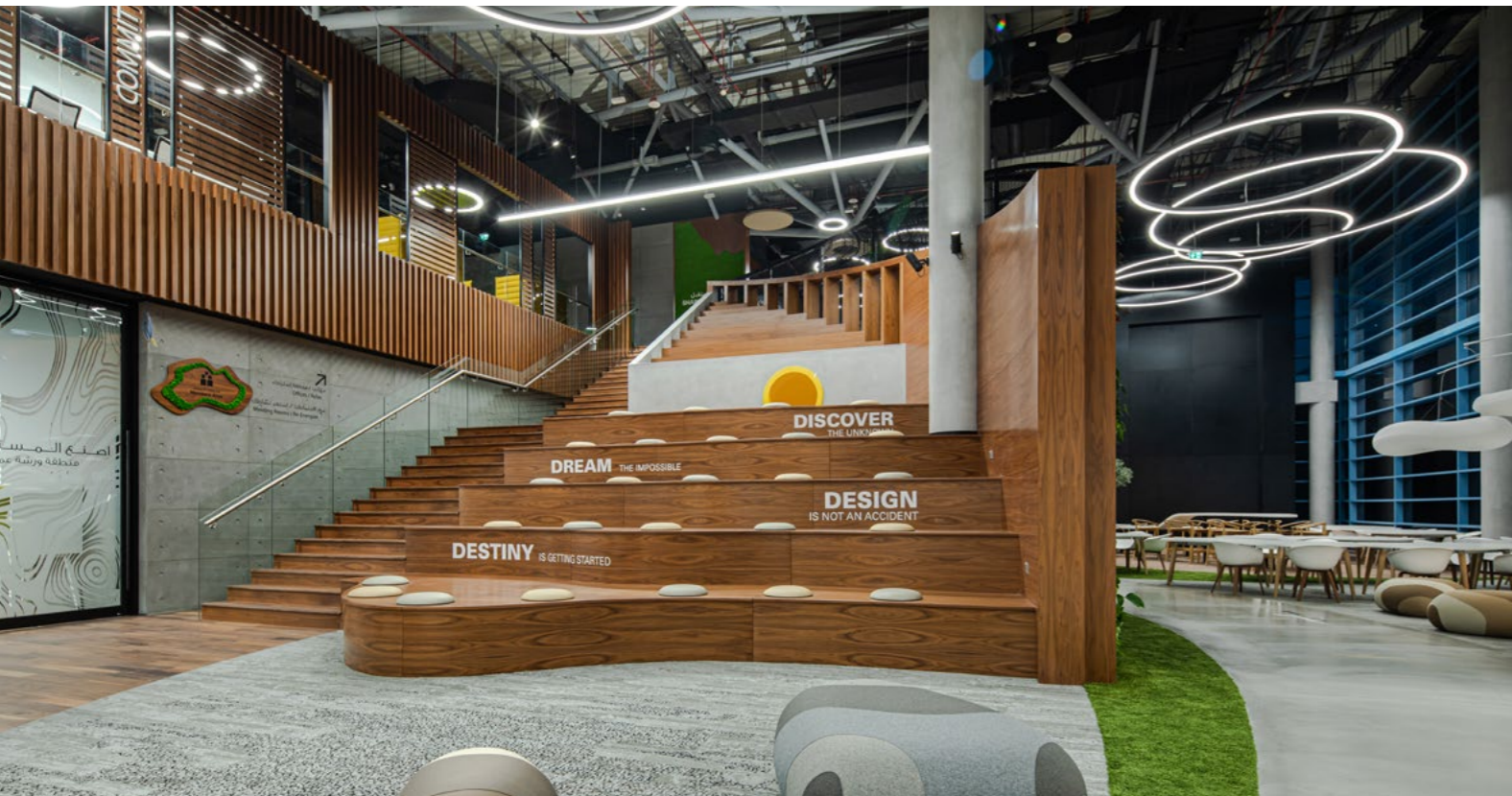
EDUCATION

Zayed University

Dubai, UAE

Architecture: HOK
Lighting Design: Umayya
Photography: Joseph Vincent Johnson
Products: Acousto, Wave Round

The Innovation and Entrepreneurship Center at Zayed University was designed to engage and inspire students to reach their full potential and to promote innovation and entrepreneurship within the university and throughout the UAE. The architects together with the lighting specialists managed to create a nice working ambiance with very interesting acoustic elements in the entire fit-out – acoustic interlay carpets, acoustic lights and sound absorbing panels.



EDUCATION

High School Slovenj Gradec

Slovenj Gradec, Slovenia

Architecture: Plan B
Photography: Miran Kambič
Products: Lona, Gyon

Our luminaries have been integrated into a beautifully renovated school. Different school activities and spaces require different types of illumination.

Especially in the classrooms, the illumination with the possibility of diverse lighting scenarios and a combination of direct and indirect light is vital to support students' work and well-being and enhance the learning process.

EXPOSITION

Museum of Vučedol culture

Vukovar, Croatia

Architecture: Radionica arhitekture + Vanja Ilić
Photography: Miljenko Bernfest
Products: Pipes

The Museum of Vučedol culture is an important project for the preservation of Croatian national heritage. Taking this to the forefront, lighting was designed to focus on exhibited products, creating a dark space with spotlights and an easily visible path to guide you around...



EXPOSITION

Munch Museum

Oslo, Norway

Architecture: Estudio Herreros and LPO architects
Photography: Dag Sandven
Products: Flott, Lona

Munch Museum was designed as an intelligent, sustainable and efficient building and a pleasant place to spend time for both visitors and workers.

The lighting became part of the architecture, following its lines, details and materiality, highlighting colours and showing textures.

By your side

We understand and support your ideas.

Our highly qualified and experienced team and associated partners can follow different project typologies, support you through every phase of the project realization and help you with all the information you may need. We speak 13 languages and the universal one: passion.

The team behind the brand

We are all Intra. All of us, every day, each in its area, contribute to growing together. We value diversity and encourage inclusion. Our employees differ across nationalities, ages, and gender.



Intra lighting is a family-owned company. From left to right: Anej, Nika, Marjeta and Mario Furlan



PLANNING

Our team will help you define your project's specific requirements and provide the best solution for your needs.

PRODUCT SELECTION

We offer advice regarding luminaire selection and technical specifications.

DELIVERY

We stand for timely delivery. Our operations team will ensure that your order is accurately processed for production and delivered on time.

CONTACT US

Let's work together

Collaboration is the key to success. We have all you need: innovative high-quality products, knowledge, immense passion, more than 30-year tradition and experience, excellent staff, outstanding references and great partners. Let's create the future together and make it visible. All visible.

www.intra-lighting.com



Headquarters

Intra lighting d.o.o.
Vrtojbenska cesta 50
5290 Šempeter pri Gorici
Slovenia

T: +386 5 398 44 00
info@intra-lighting.com

Follow us on

Find us on

Offices

Benelux
Intra lighting Benelux B.V.
Gildenstraat 26
4143 HS Leerdam
T: +31 345 623 678
E: sales@intra-lighting.nl

Bosna and Herzegovina
Intra lighting d.o.o.
Hasana Brkića 30
71000 Sarajevo
T: +387 33 642 841
E: info@intra-lighting.com

Croatia
Intra lighting d.o.o.
Ulica grada Vukovara 269d
10000 Zagreb
T: +385 1 6389 141
E: info@intra-lighting.com

Italy
Intra lighting S.r.l.
Via Adelaide Bono Cairoli 30
20127 Milano
T: +39 02 9176 1234 / 42
E: info@intra-lighting.com

North America
Intra lighting US, LLC
2556 Metropolitan Drive
Trevose, PA 19053
T: 215-918-4199
E: info.us@intra-lighting.com

Serbia
Intra lighting d.o.o. Beograd
Omladinskih brigada 90B
Airport City
11070 Novi Beograd
T: +381 11 269 8 476
E: info@intra-lighting.com

Slovenia
Intra lighting d.o.o.
BTC, PTC Diamant
Letališka 5
1000 Ljubljana
T: +386 1 547 65 30
E: info@intra-lighting.com

United Arab Emirates
Intra lighting MEA, LLC
Dubai Design District (D3)
Building 5, Office A201, Dubai
M: +971 56 1783336
E: info@intra-lighting.com